

**ULTRA VAC®**  
**LAZER Z®, LAZER Z® AS,**  
**LAZER Z® XP, LAZER Z® XS**  
**AND LAZER Z® DS MODELS**

**For Ultra Vac Serial Nos.**  
**312,000,000 & Higher**  
**(to fit Lazer Z (LZ), Lazer Z AS (LAS),**  
**Lazer XP Units 352,000-789,999)**  
**(to fit Lazer Z XS Units**  
**352,000 & Higher)**  
**(to fit Lazer Z DS Units**  
**312,000,000 & Higher)**

Part No. 4501-082 Rev. A

**Parts Manual**

**EXMARK PARTS PLUS**

***PARTS***

**OVERNIGHT**  
**OR *FREE*\***

If your Exmark dealer does not have the Exmark part in stock, Exmark will get the parts to the dealer the next business day or the part will be FREE Guaranteed!! (Some restrictions apply. See your participating Exmark Dealer for details.)



**READ OPERATOR'S MANUAL BEFORE  
OPERATING OR SERVICING EXMARK EQUIPMENT**

## **TABLE OF CONTENTS**

<b><u>Description</u></b>	<b><u>Page</u></b>
Blower Assembly – Lazer Z 52" .....	3-4
Blower Assembly – Lazer Z, Lazer XP, Lazer XS, & Lazer DS (60", 66" & 72") .....	5-6
Decals .....	13
Hood and Bag Assembly – Lazer Z 52" .....	7-8
Hood and Bag Assembly – Lazer Z, Lazer XP, Lazer XS, & Lazer DS (60", 66" & 72").....	9-10
Weight and Belt Drive Components .....	11-12

## BLOWER ASSEMBLY – LAZER Z 52”

Item	Part No.	Description	Qty.
1▲	109-1119-03	Wld, Blower Mount .....	1
2	103-3815	Wld, Impeller .....	1
3+	1-653346	Bearing, SPH. OD .....	2
4	1-513013	Housing, Flange .....	4
5+	103-1047	Sheave, Blower .....	1
6	103-3592	Wld, Upper Housing (1-652345-03) With Decals .....	1
7	1-653331	Spring, Idler .....	1
8	3290-357	Nut, Whizlock 3/8-16 .....	8
9	323-7	Screw, HH 3/8-16 x 1 1/4 .....	1
10	323-11	Screw, HH 3/8-16 x 2 1/4 .....	2
11	323-12	Screw, HH 3/8-16 x 2 1/2 .....	2
12	3256-4	Washer, 3/8 Std.....	4
13	103-4171	Chute, Blower.....	1
14	1-353054	Latch, Grass Catcher .....	1
15	3296-39	Nut, Nyloc 3/8-16.....	1
16	1-653322	Pulley, Idler.....	1
17	103-0130	Bushing, Idler Pivot .....	1
18	109-1122-01	Bumper.....	1
19	103-2876	Asm , Idler W/Bushings Zerk, & Decal.....	1
20	3230-18	Bolt, Carriage 5/16-18 x 5/8 .....	6
21	1-513208	Washer, Spring Disc.....	1
22	3219-6	Nut, Hex 5/8-18 .....	1
23■	3220-5	Nut, Jam 1/2-20.....	1
24	1-513435	Washer, Spring Disc.....	1
25	1-653365	Spacer .....	1
26	1-653366	Hub.....	1
27	32128-20	Nut, Whizlock 5/16-18 .....	6
28	3290-500	Screw, PPH #10-24 x 5/8 .....	4
29	321-3	Screw, HH 1/4-20 x 5/8 .....	8
30	32128-33	Nut, Whizlock 1/4-20 .....	15
31	1-303334	Washer, Spring Disc 5/16.....	1
32	3229-11	Bolt, Carriage 1/4-20 x 5/8 .....	5
33	103-0126	Bushing, Locator .....	1

Item	Part No.	Description	Qty.
34	3257-32	Key, Woodruff #61 5/8 x 3/16 .....	1
35	103-3585	Cover, Bearing (103-3586-03) With Decal.....	1
36	3296-47	Nut, Nyloc 5/16-18 Thin .....	2
37	3256-3	Washer, 5/16 Std .....	2
38	3274-18	Screw, Socket HD 5/16-18 x 1 1/4.....	1
39	1-803075	Screw, CRTH #10-24 x 3/4 .....	8
40	3290-148	Nut, Whizlock #10-24 .....	3
41	1-803076	Screw, CRTH 1/4-20 x 3/4 .....	2
42	3274-107	Screw, Socket But HD 3/8-16 x 1 3/4 .....	1
43	1-353050	Pin, Grass Catcher.....	1
44	1-806323	Roll pin .....	1
45	1-653596-03	Plate, Blower Backing.....	1
46	302-19	Zerk, 1/8-28 Straight .....	1
47	3256-24	Washer, 3/8 SAE .....	1
48	1-653443-03	Plate, Filler (Below S/N 260,000).....	1
49	103-1042-03	Plate, Blocker.....	1
50	3217-6	Nut, Hex 5/16-18.....	1
51	103-1103	Pulley, Idler .....	1
52	1-653429	Asm, Latch .....	2
53	323-8	Screw, HH 3/8-16 x 1 1/2.....	2
54	1-653600	Bearing.....	2
55	3256-14	Washer, #10 Std .....	4
56	103-4752-03	Plate, Reinforcing (Below S/N 260,000) .	1
57	3290-500	Screw, PPH #10-24 x 5/8.....	2
58	3296-2	Nut, Nyloc #10-24 .....	3
59	3256-14	Washer, #10 Std .....	5
60	109-2041	Tube, Lower .....	1
61	109-2036	Tube, Upper 52”.....	1
62	32105-13	Screw, Slotted HH #10-24 x 3/4 .....	3
63	103-1209	Asm, Blower, (Includes Items 1-56 & Decals).....	1
64	3256-26	Washer-1/2 SAE .....	1
65	3296-28	Nut-Nyloc .....	1

Exmark black touch up spray paint – gloss black.

Exmark red touch up paint (spray paint – P/N 1-850337 - .6 oz liquid bottle – P/N 103-9140).

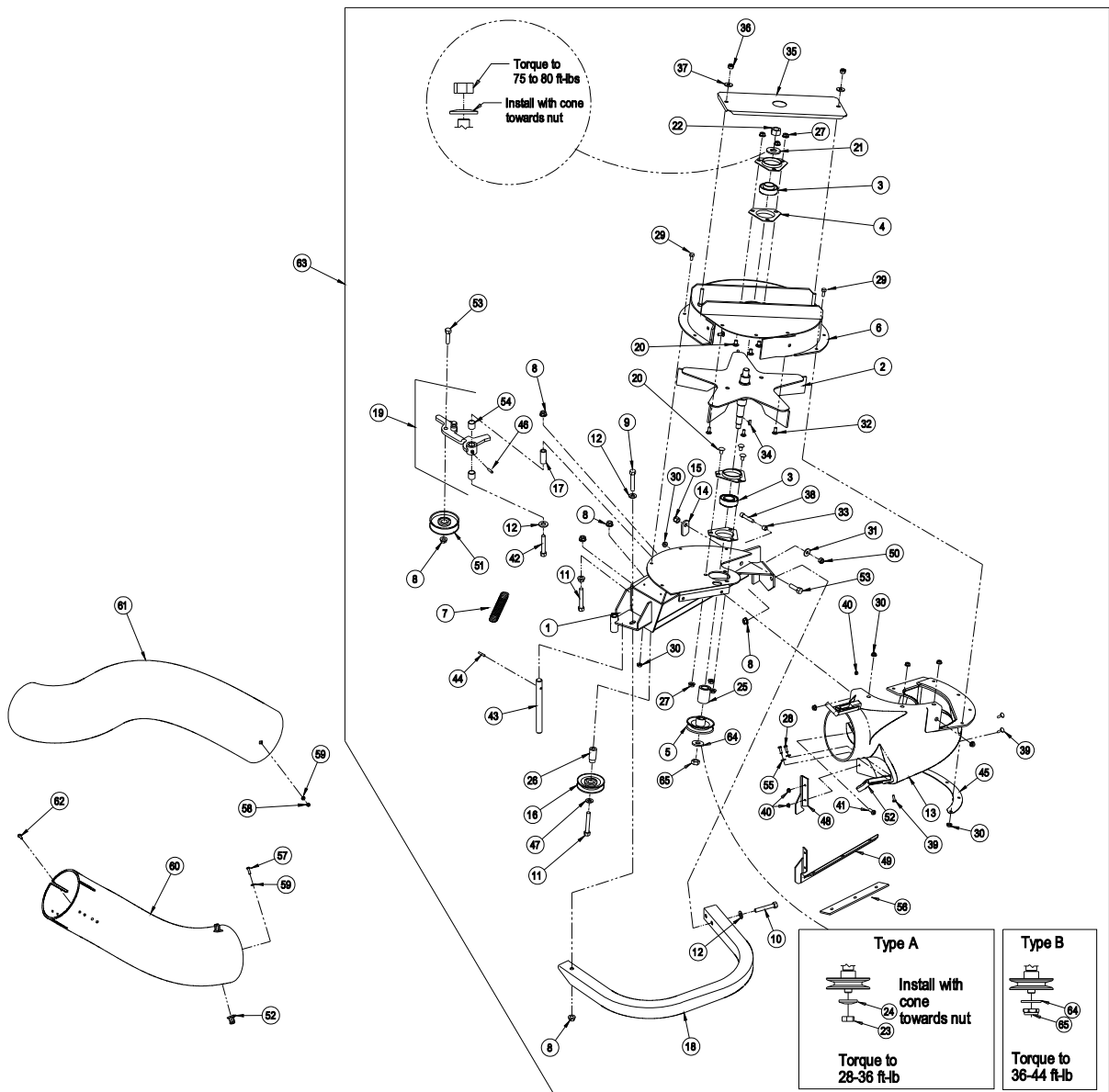
Kit 103-0583 is available to add or repair the welded-on accessory mounting tube on all 44”-72” decks (excluding Triton models).

✦ Apply Mobil HTS grease (P/N 103-5217 1.5 oz packet) (or a food-grade antisieze) on bore of sheave and bearings.

▲ Includes items 43 and 44.

■ Use Pro-Lock retaining type, Part no. 1-840023 (.5cc tube) on threads.

# BLOWER ASSEMBLY – LAZER 52"



**BLOWER ASSEMBLY – LAZER Z, LAZER XP,  
LAZER XS, & LAZER DS (60”, 66” & 72”)**

Item	Part No.	Description	Qty.
1	109-1133-03	Wld, Blower Mount 60”&72”	1
2	103-0455	Wld, Impeller	1
3+	1-653346	Bearing, SPH. OD	2
4	1-513013	Housing, Flange	4
5+	103-0456	Sheave, Blower	1
6	103-3593	Wld, Upper Housing (103-0457-03) With Decals	1
7	1-653331	Spring, Idler	1
8	3290-357	3/8-16 Whizlock Nut	8
9	114439	Rivet	3
10	323-11	Screw HH 3/8-16 x 2 1/4	4
11	3256-4	Washer, Flat .438 x 1.00 x .083	4
12▲	109-2954	Asm, Blower Chute	1
13	1-353054	Latch, Grass Catcher	1
14	3296-39	Nut, Nyloc 3/8-16	1
15	1-603044	Bushing, Idler Pivot	1
16	103-0458-01	Bumper	1
17	103-0448	Asm, Idler W/Bushings (103-0462-03) Zerk, & Decal	1
18	3230-18	Bolt, Carriage 5/16-18 x 5/8	6
19	1-513208	Washer, Spring Disc	1
20	3219-6	Nut, 5/8-18	1
21■	3220-5	Nut, Jam 1/2-20	1
22	1-513435	Washer, Spring Disc	1
23	103-0460	Spacer	1
24	32128-20	Nut, Whizlock 5/16-18	6
25	321-4	Screw, HH 1/4-20 x 3/4	2
26	321-3	Screw, HH 1/4-20 x 5/8	10
27	32128-33	Nut, Whizlock 1/4-20	17
28	1-303334	Washer, Spring Disc 5/16	1
29	3229-11	Bolt, Carriage 1/4-20 x 5/8	3
30	103-0126	Bushing, Locator	1
31	3257-32	Key, Woodruff #61 5/8 x 3/16	1
32	103-3583	Cover, Bearing (103-3584-03) With Decal	1

Item	Part No.	Description	Qty.
33	3296-47	Nut, Nyloc 5/16-18 (thin)	2
34	3256-3	Washer, Flat 5/16 x 7/8 OD	2
35	3274-18	Screw, Socket HD 5/16-18 x 1 1/4	1
36	1-803075	Screw, CRTH #10-24 x 3/4	3
37	3290-148	Nut, Whizlock #10-24	3
38	1-803076	Screw, CRTH 1/4-20 x 3/4	2
39	323-8	Screw HH 3/8-16 x 1 1/2	2
40	103-2898	Latch, Rubber	2
41	3217-6	Nut 5/16-18	1
42	103-0461-03	Plate, Blower Backing	1
43	323-4	Screw HH 3/8-16 x 3/4	3
44	302-19	Zerk, 1/8-28 Straight	1
45	103-0483	Pulley, Idler	1
46	1-653367	Hub, Spacer	1
47	1-653600	Bearing	2
48	103-3093	Plate, Backing	2
49	103-0445-03	Wld, Mount Pin	1
50	32105-13	Screw, HWH #10-24 x 3/4	10
51	109-1974	Tube, Lower	1
52	109-3525	Tube, Upper 60”	1
	109-1968	Tube, Upper 66” & 72”	1
53	103-2897	Latch, Catch	2
54	3256-61	Washer, Flat .216 x .75 x .05	6
55	3296-2	Nut, Nyloc #10-24	10
56	321-6	Screw, HH 1/4-20 x 1	2
57	103-3079	Plate, Backing	2
58	1-353005-03	Handle	1
59	3296-42	Nut, Nyloc 1/4-20	4
60	3256-55	Washer, Flat .26 x 1.25	2
61	3229-1	Bolt, Carriage 1/4-20 x 3/4	2
62	109-1986	Asm, Blower (Includes Items 1-49,61, 63 & Decals)	1
63	103-4751-03	Plate, Reinforcement	1
64	3256-26	Washer-1/2 SAE	1
65	3296-28	Nut-Nyloc	1

Exmark black touch up spray paint – gloss black.

Exmark red touch up paint (spray paint – P/N 1-850337 - .6 oz liquid bottle – P/N 103-9140).

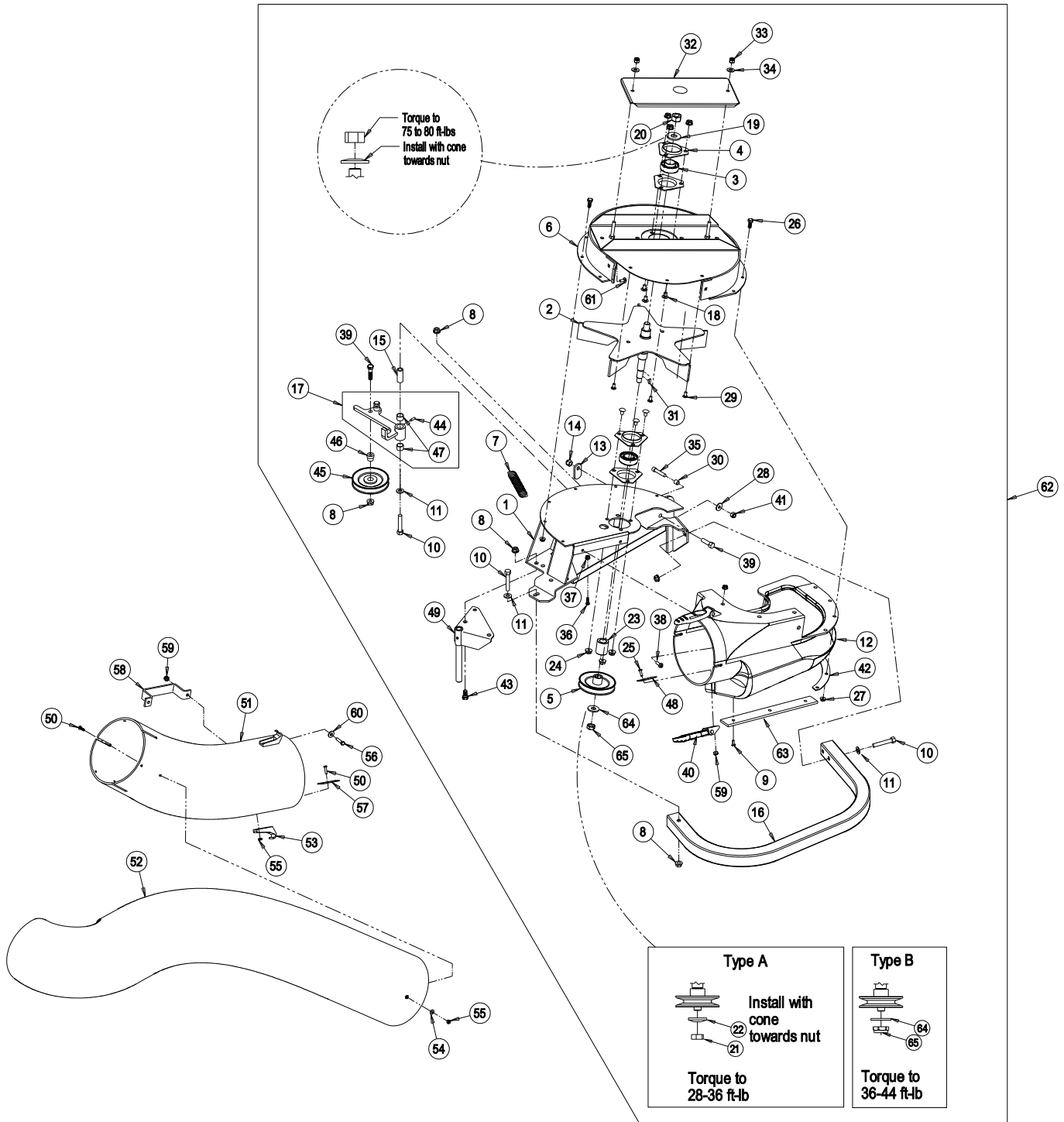
Kit 103-0583 is available to add or repair the welded-on accessory mounting tube on all 44”-72” decks (excluding Triton models).

✚ Apply Mobil HTS grease (P/N 103-5217 1.5 oz packet) (or a food-grade antisieze) on bore of sheave and bearings.

▲ Includes items 9 & 63.

■ Use Pro-Lock retaining type, Part no. 1-840023 (.5cc tube) on threads.

# BLOWER ASSEMBLY – LAZER Z, LAZER XP, LAZER XS, & LAZER DS (60", 66" & 72")



## HOOD and BAG ASSEMBLY – LAZER Z 52”

Item	Part No.	Description	Qty.
1◆	1-654597	Asm, Hood.....	1
2	1-653397-03	Stiffener, Bagger Top .....	1
3	103-0825-03	Wld, Hinge (RH) .....	1
	103-0826-03	Wld, Hinge (LH).....	1
4	114967	Screen .....	1
5	114439	Rivet, Pop 3/16 x 1/2 .....	38
6	1-803075	Screw, Truss HD #10-24 x 3/4 .....	6
7	3256-61	Washer, 216 x .750 x .049 .....	14
8	3296-2	Nut, Nyloc #10-24.....	4
9	1-653561	Seal, Chute.....	1
10	1-653598-03	Clamp, Seal.....	1
11	103-1346	Seal .....	1
12	1-653400-03	Support, Screen .....	1
13	1-653519	Mount, Latch.....	1
14	1-653036	Washer, .344 x 1.75 x .062 Pltd .....	2
15	321-4	Screw, HH 1/4-20 x 3/4 .....	6
16	32128-33	Nut, Whizlock 1/4-20 .....	6
17	1-653403	Latch.....	1
18	1-653535	Reinforcement, Latch .....	1
19	321-11	Screw, HH 1/4-20 x 2 .....	1
20	3274-55	Screw, HSBH 5/16-18 x 3/4 .....	2
21	3296-42	Nut, Nyloc 1/4-20.....	3
22	321-6	Screw, HH 1/4-20 x 1 .....	2
23	103-4741-03	Wld, Bagger Upright .....	1
24	3256-2	Washer, 1/4 Std.....	2
25	1-633545	Spacer .....	2
26	1-653544	Spring .....	2
27	322-3	Screw, HH 5/16-18 x 3/4 .....	2
28	1-653528-03	Plate, Backing .....	1
29	1-653529-03	Frame, Bag.....	1
30	114973-03	Hanger, Bag .....	1
31	114974-03	Clamp.....	1

Item	Part No.	Description	Qty.
32	3230-1	Bolt, Carriage 5/16-18 x 3/4 .....	2
33	3296-29	Nut, Nyloc 5/16-18 .....	2
34	116-0757	Bag, Cloth .....	1
35	1-653566	Handle, Bag .....	1
36	3229-1	Bolt, Carriage 1/4-20 x 3/4 .....	2
37	1-653036	Washer, .344 x 1.75 x .062 Pltd.....	2
38	3296-42	Nut, Nyloc 1/4-20 .....	2
39	1-653404	Catch.....	1
40	3290-500	Screw, PPH #10-24 x 5/8.....	2
41	3290-148	Nut, Whizlock #10-24 .....	2
42	103-5124-03	Wld, Bag Support.....	1
43	32128-33	Nut, Whizlock 1/4-20 .....	1
44	1-523420	Bumper.....	1
45	116-0754	Asm, Bag.....	1
46	32153-1	Nut, Side Lock #10-24 .....	6
47*	71-9310	Spacer, ROPS (Type A).....	6
48	283-69	Clevis Pin .....	2
49	1-806005	Hairpin, Cotter.....	2
50	3250-27	Screw, PPH #10-24 x 7/8.....	4
51	323-7	Screw, HH 3/8-16 x 1 1/4 (Type A).....	8
	323-7	Screw, HH 3/8-16 x 1 1/4 (Type B).....	14
52	103-0429-03	Wld, Bagger Mount .....	1
53	103-5612-03	Frame, Bracket (LH) (Type A).....	1
54	103-0399-03	Frame, Bracket (RH) (Type B).....	1
55	3290-357	Nut, Whizlock 3/8-16 (Type A).....	8
	3290-357	Nut, Whizlock 3/8-16 (Type B).....	14
56	98-5975	Washer, Spring Disc 3/8 (Type A).....	8
	98-5975	Washer, Spring Disc 3/8 (Type B).....	14
57	103-1155-03	Spacer (Type B).....	2
58	103-2975-03	Plate, Bagger Mount (Type B) .....	2
59■	116-0128	Diverter, Muffler W/Screw .....	1

Exmark black touch up spray paint – gloss black.

◆ Includes items 2,4,7,12,13,18 riveted together and Decal.

\* Used on units with ROPS installed only.

■ Used only on LAS28KA524 Units S/N 670,000-789,999.





**HOOD and BAG ASSEMBLY – LAZER Z, LAZER XP,  
LAZER XS, & LAZER DS (60”, 66” & 72”)**

Item	Part No.	Description	Qty.
1◆	103-0437	Asm, Hood.....	1
2	103-0382-03	Stiffener, Bagger Top .....	1
3	103-0430-03	Wld Hinge.....	2
4	103-0391	Reinforcement, Hood .....	2
5	103-0440	Screen, Bagger .....	1
6	114439	Rivet, Pop 3/16 x 1/2 .....	55
7	1-803075	Screw, Truss HD #10-24 x 3/4 .....	5
8	3256-61	Washer, 216 x .750 x .049 .....	23
9	3296-2	Nut, Nyloc #10-24.....	8
10	103-0439	Seal, Tube .....	1
11	103-0378	Clamp, Seal.....	2
12	103-0451	Seal, Hinge.....	1
13	103-0452-03	Plate, Backing .....	1
14	103-0380-03	Support, Screen .....	1
15	103-0379	Bracket, Mount .....	2
16	321-4	Screw, HH 1/4-20 x 3/4 .....	10
17	32128-33	Nut, Whizlock 1/4-20 .....	10
18	1-653403	Latch.....	2
19	103-0376	Plate, Latch Reinforcement .....	2
20	321-11	Screw, HH 1/4-20 x 2 .....	2
21	103-5124-03	Wld, Bag Support .....	2
22	3296-42	Nut, Nyloc 1/4-20.....	4
23	321-6	Screw, HH 1/4-20 x 1 .....	2
24	103-4735-03	Wld, Bagger Upright .....	1
25	3256-2	Washer, 1/4 Std.....	4
26	1-633545	Spacer .....	2
27	1-653544	Spring .....	2
28	322-3	Screw, HH 5/16-18 x 3/4 .....	4
29	1-653529-03	Frame, Bag.....	1
30	114973-03	Hanger, Bag .....	1
31	114974-03	Clamp .....	1
32	3230-1	Bolt, Carriage 5/16-18 x 3/4 .....	2

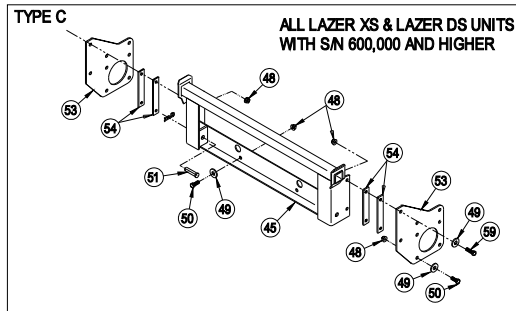
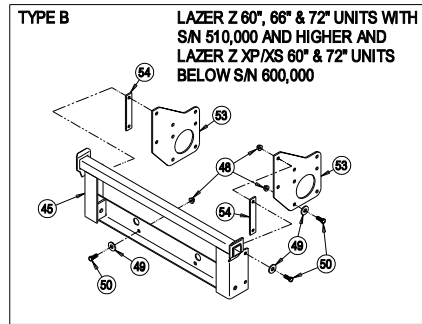
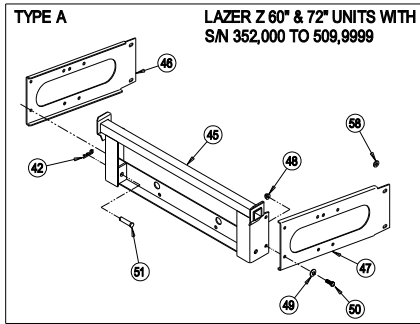
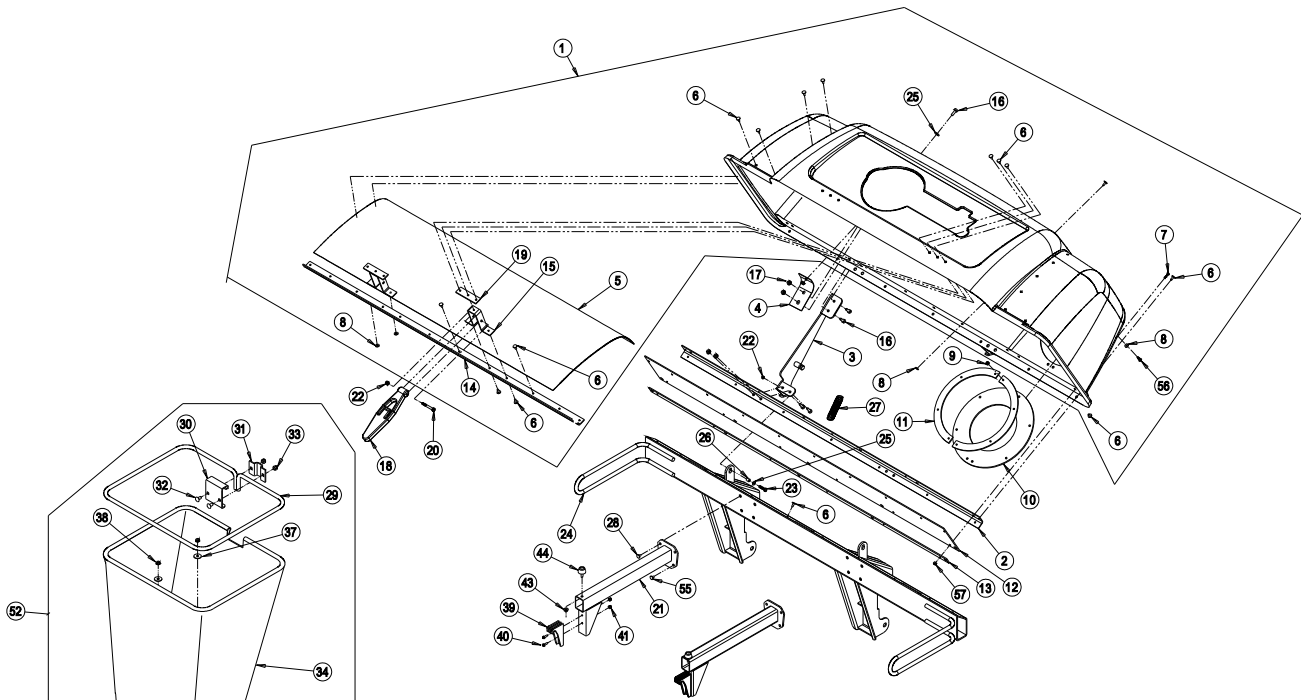
Item	Part No.	Description	Qty.
33	3296-29	Nut, Nyloc 5/16-18 .....	2
34	116-0757	Bag, Cloth .....	1
35	1-653566	Handle, Bag .....	1
36	3229-1	Bolt, Carriage 1/4-20 x 3/4 .....	2
37	1-653036	Washer, .344 x 1.75 x .062 Pltd.....	2
38	3296-42	Nut, Nyloc 1/4-20 .....	2
39	1-653404	Catch.....	1
40	3290-500	Screw, PPH #10-24 x 5/8.....	2
41	3290-148	Nut, Whizlock #10-24 .....	2
42	1-806005	Hairpin.....	2
43	32128-33	Nut, Whizlock 1/4-20 .....	1
44	1-523420	Bumper.....	1
45	103-0429-03	Wld, Bagger Mount .....	1
46	103-5612-03	Bracket, Frame LH (Type A) .....	1
47	103-0399-03	Bracket, Frame RH (Type A) .....	1
48	3290-357	Nut, Whizlock 3/8-16 (Type A) .....	8
	3290-357	Nut, Whizlock 3/8-16 (Type B & C) .....	14
49	98-5975	Washer, Spring Disc 3/8 (Type A) .....	8
	98-5975	Washer, Spring Disc 3/8 (Type B & C) ...	14
50	323-7	Screw HH 3/8-16 x 1 1/4 (Type A) .....	8
	323-7	Screw HH 3/8-16 x 1 1/4 (Type B) .....	14
	323-7	Screw HH 3/8-16 x 1 1/4 (Type C).....	10
51	283-69	Clevis Pin .....	2
52	116-0754	Asm, Bag.....	1
53	103-2975-03	Plate, Bagger Mount (Type B & C) .....	2
54	103-1155-03	Spacer (Type B).....	2
	103-1155-03	Spacer (Type C).....	4
55	3274-55	Screw, HSBH 5/16-18 x 3/4 .....	4
56	3250-27	Screw, PPH #10-24 x 7/8.....	4
57	32153-1	Nut, Side Lock #10-24 .....	5
58*	71-9310	Spacer, ROPS (Type A).....	6
59	323-7	Screw 3/8-16 x 1.25 (Type C).....	4

Exmark black touch up spray paint – gloss black.

◆ Includes items 2,5,6,8,14,15,19 riveted together and Decal.

\* Used on units with ROPS installed only.

# HOOD and BAG ASSEMBLY – LAZER Z, LAZER XP, LAZER XS, & LAZER DS (60", 66" & 72")



## WEIGHT and BELT DRIVE COMPONENTS

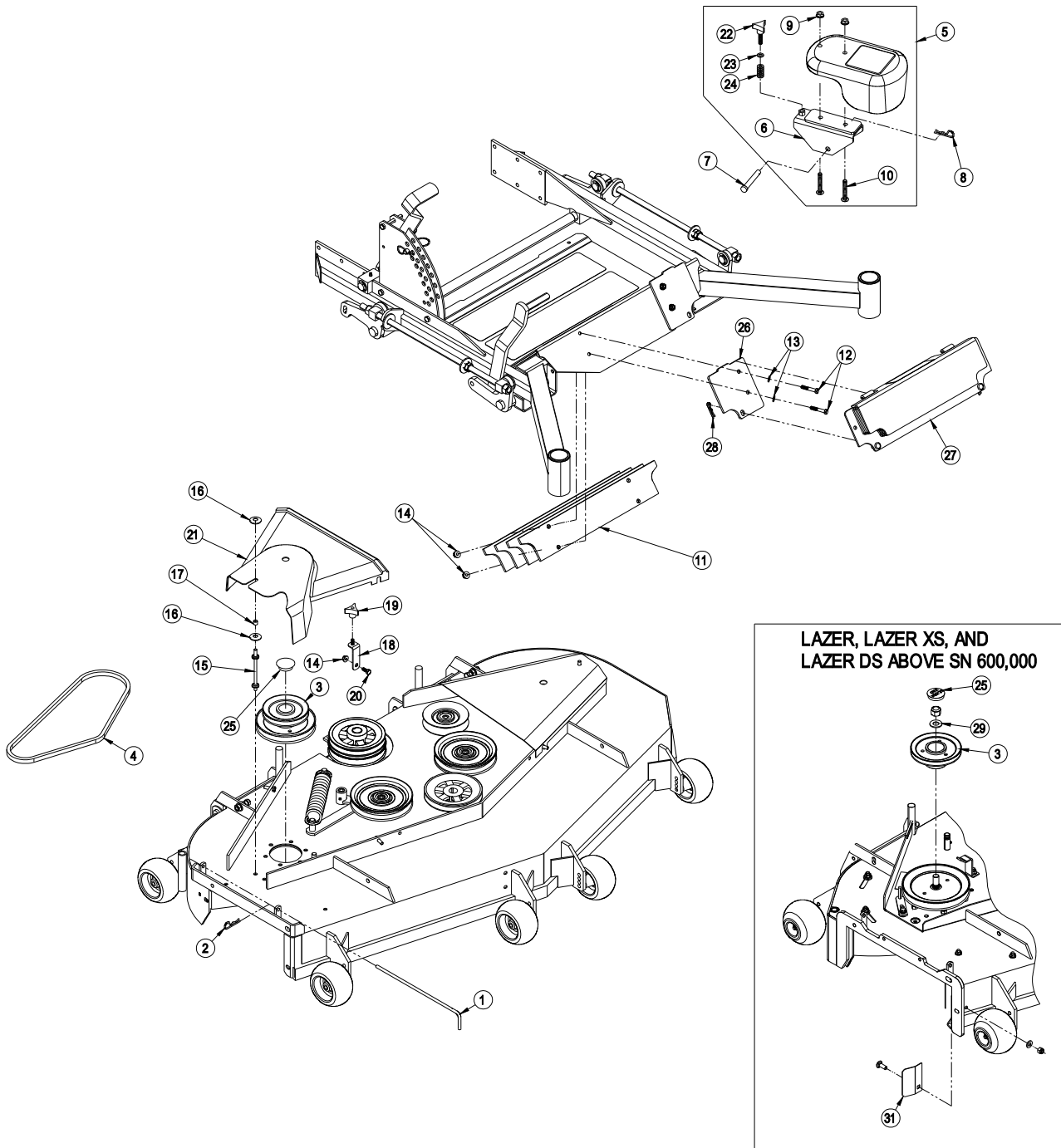
Item	Part No.	Description	LAZER below SN 600,000 and all AS			LAZER above SN 600,000 with Triton deck			LAZER XP		LAZER XS below SN 600,000		LAZER XS & Lazer DS above SN 600,000		
			52"	60"	72"	60"	66"	72"	60"	72"	60"	72"	60"	66"	72"
1	109-3458	Pin, Chute Pivot	1	1	1	1	1	1	1	1	1	1	1	1	
2	1-806003	Hairpin, Cotter	1	1	1	1	1	1	1	1	1	1	1	1	
3	103-2792	Sheave, Jackshaft LZUV 60		1					1		1				
	103-2796	Sheave, Jackshaft LZUV 72			1				1		1				
	103-2797	Sheave, Jackshaft, LZUV 52	1												
	109-1164	Sheave, 60 Triton & Series 5				1							1		
	109-1216	Sheave 66 Triton					1							1	
	109-1231	Sheave 72 Triton & Series 5						1						1	
4	1-653438	Belt, Blower Drive 52	1												
	103-0866	Belt, Blower Drive 60		1					1		1				
	103-0867	Belt, Blower Drive			1		1		1		1		1		
	109-1242	Belt, Blower Drive 60 Triton & Series 5				1							1		
	109-1244	Belt, Blower Drive 72 Triton & Series 5						1						1	
5 ●	103-0899	Weight, 70lb w/ 1.5" bracket		1											
	103-0900	Weight, 70lb w/ 2.0" bracket		1		2					2		2		
	103-0901	Weight, 43lb w/ 1.5" bracket	1												
	103-0902	Weight, 43lb w/ 2.0" bracket	1		2		2	2	2		2		2	2	
6	103-2180-01	Wld, Weight Bracket 2.0	1	1	2	2	2	2	2	2	2	2	2	2	
	103-2181-01	Wld, Weight Bracket 1.5	1	1											
7	283-69	Pin, Clevis	2	2	2	2	2	2	2	2	2	2	2	2	
8	1-806005	Hairpin, Cotter	2	2	2	2	2	2	2	2	2	2	2	2	
9	3290-357	Nut, Whizlock 3/8-16	4	4	4	4	4	4	4	4	4	4	4	4	
10	103-2500	Screw, Sq Head 3/8-16 x 2 1/2	4		4		4	4	4	4	4	4	4	4	
	103-2189	Screw, Sq Head 3/8-16 x 4		4		4					4		4		
11	103-1425-01	Plate, Weight	4	4	4				4	4	4	4	5**	5**	5**
12	322-9	Screw, HH 5/16 -18 x 1 3/4	4	4	4				4	4	4	4	4**	4**	4**
13	3256-23	Washer, 5/16 SAE	4	4	4				4	4	4	4	4**	4**	4**
14	32128-20	Nut, Whizlock 5/16-18	6	4	4				4	4	4	4	4**	4**	4**
15	103-1028	Stud, Belt Shield		1	1	1	1	1	1	1	1	1	1	1	
16	1-603610	Washer, Spring Disc 7/16		2		2			2		2		2		
17	1-633545	Spacer, Grommet		1		1			1		1		1		
18	103-1499	Support, Belt Cover	2												
19	1-323385	Knob	2												
20	321-3	Screw, HH 5/16-18 x 3/4	2												
21	103-0734	Belt Cover 52"	1												
	103-0735	Belt Cover 60"		1					1		1				
	103-0736	Belt Cover 72"			1				1		1				
	109-1171	Belt Cover 60" Triton & Series 5				1							1		
	109-1172	Belt Cover 66" Triton					1							1	
	109-1173	Belt Cover 72" Triton & Series 5						1						1	
22	103-2187	Knob	2	2	2	2	2	2	2	2	2	2	2	2	
23	3256-24	Washer	2	2	2	2	2	2	2	2	2	2	2	2	
24	103-2188	Spring	2	2	2	2	2	2	2	2	2	2	2	2	
25	103-1279	Plug	1	1	1	1	1	1	1	1	1	1	1	1	
26	103-5856-01	Plate, Weight Mounting	2	2	2				2	2	2	2	2**	2**	2**
27	103-5866	Asm, Weight Plate W/Decals	1	1	1				1	1	1	1	1**	1**	1**
28	9335124	Hairpin, Cotter	2	2	2				2	2	2	2	2**	2**	2**
29	3256-27	Washer, 5/8 SAE			1	1	1						1	1	1
30 ◇	103-5865	Template, Drill	1	1	1				1	1	1	1	1**	1**	1**
31	109-2977-01	Deflector				1	1	1					1	1	1

● Includes items 6, 9, 10, 21, 22, 23 weight and decal

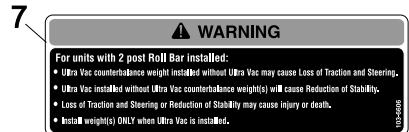
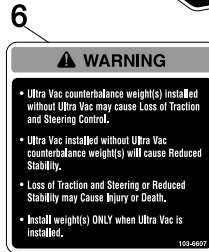
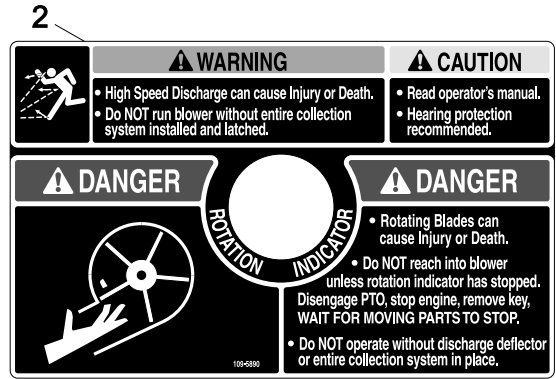
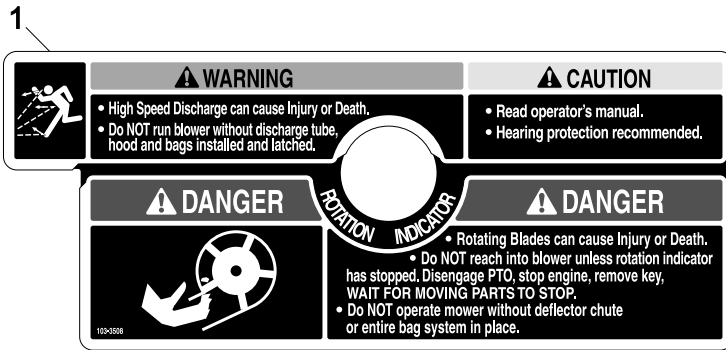
\*\* Liquid cooled units only

◇ Item not shown. Use to drill holes for floorpan weights

# WEIGHT and BELT DRIVE COMPONENTS



# DECALS



Item	Part No.	Description	Qty.
1	103-3508	Decal, Warning (52)	1
2	109-5890	Decal, Warning (60 & 72)	1
3	1-653546	Decal, Exmark (52)	1
	103-0438	Decal, Exmark (60 & 72)	1
4	103-3113	Decal, Lazer	1

Item	Part No.	Description	Qty.
5	1-653557	Decal, Ultra Vac	1
6	103-6607	Decal, Weight	3
7	103-6606	Decal, Weight	1
8	98-5954	Decal, Missing Cover	1
9	1-653558	Decal, Hot Sheave	1



## SEE EXMARK'S COMPLETE LINE OF ACCESSORIES AND OPTIONS

### MID-MOUNT RIDING ACCESSORIES AND OPTIONS

CUSTOM RIDE SEAT SUSPENSION SYSTEM	OPERATOR CONTROLLED DISCHARGE
FULL SUSPENSION SEAT	ROLL OVER PROTECTION SYSTEM (ROPS)
DECK LIFT ASSIST KIT	SUN SHADE
HITCH KIT	TRASH CONTAINER
LIGHT KIT	TURF STRIPER
12V POWER PORT	ULTRA VAC COLLECTION SYSTEM
MICRO-MULCH SYSTEM	ULTRA VAC QUICK DISPOSAL SYSTEM

### OUT-FRONT RIDING ACCESSORIES AND OPTIONS

CUSTOM RIDE SEAT SUSPENSION SYSTEM	SNOW BLADE
DUAL-TAIL WHEEL	SNOWBLOWER
FLOOR PAN EXTENDER	SUN SHADE
HITCH KIT	TRASH CONTAINER
LIGHT KIT	ULTRA VAC COLLECTION SYSTEM
MICRO-MULCH SYSTEM	ULTRA VAC QUICK DISPOSAL SYSTEM
ROLL OVER PROTECTION SYSTEM (ROPS)	WEATHER CAB

### WALK-BEHIND ACCESSORIES AND OPTIONS

GRASS CATCHER	TURF STRIPER
MICRO-MULCH SYSTEM	STANDON

Place Model No. and Serial No.  
Label Here (Included in the Literature  
Pack or Fill in Below)

Model No. \_\_\_\_\_

Serial No. \_\_\_\_\_

Date Purchased \_\_\_\_\_

© 2012 Exmark Mfg. Co., Inc.  
Industrial Park Box 808  
Beatrice, NE 68310  
All Rights Reserved

Part No. 4501-082 Rev. A  
(402) 223-6300  
Fax (402) 223-5489  
Printed In USA.



[www.exmark.com](http://www.exmark.com)