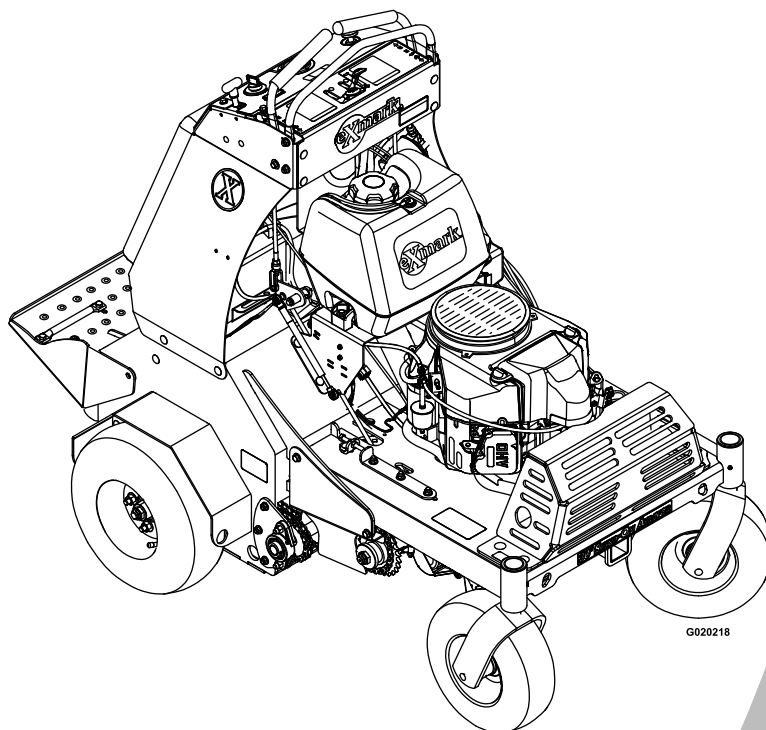




STAND-ON AERATOR

Model No. SAR481KA30CA—Serial No. 31400000 and Up

Picture below may not reflect actual product.



Parts Manual

Part No. 4501-991 Rev. A

Ordering Replacement Parts

To order replacement parts, please supply the part number, the quantity, and the description of each part desired.

Understanding Reference Numbers

Each identified part in an illustration has a reference number. The reference number for a part also appears in the parts list, along with other information about the part.

This catalog uses two special reference number formats, one to indicate parts in a service assembly and another to indicate the quantity of a given part in an illustration.

Service Assembly Reference Numbers

Parts in service assemblies have reference numbers in the form a:b. The a represents the reference number of the entire service assembly and the b represents a sequential number unique to each part within the service assembly.

For example, a wheel assembly might be identified by reference number 6, the tire by 6:1, the valve by 6:2, and the wheel by 6:3. When you order the assembly identified by reference number 6, you receive all parts identified by reference numbers 6:1, 6:2, and 6:3. However, you may also order any part individually. Reference numbers of this type appear in illustration and in parts lists.

Reference Numbers Indicating Quantity

In an illustration, if a reference number indicates more than one part, the reference number has the form nX y. The n represents the quantity of the part, the X is the multiplication symbol, and the y represents the reference number.

For example, in an illustration, the reference number 2X 37 means that two of the parts identified by reference number 37 are indicated.

List of Abbreviations

AR: as required	HJ: hex jam	PRH: phillips round head
ASM: assembly	HLH: hex lag head	PTH: phillips truss head
BBC: blade brake control	HOC: height-of-cut	PTO: power-take-off
BHTF: button head thread forming	HSBH: hex socket button head	RH: right hand
CARR: carriage	HSFH: hex socket flat head	ROPS: roll-over protection system
CCW: counter clockwise	HSH: hex socket head	RRB: rear roller brush
CW: clockwise	HWH: hex washer head	SFH: slotted fillister head
DEG: degrees	HWHTF: hex washer head thread forming	SHH: slotted hex head
DPA: Dual Point Adjustment	HYD: hydraulic	SHWH: slotted hex washer head
ECM: electronic control module	LH: left hand	SPH: slotted pan head
EXT: external	LP: Liquefied Petroleum Gas	SQH: square head
FH: flat head	LPG: Liquefied Petroleum Gas	SRH: slotted round head
GA: gauge	NI: nylon insert	STD: standard
HD: heavy-duty	NPTF: national pipe thread fine	TAP: self tapping
HF: hex flange	PFH: phillips flat head	TTH: torx truss head
HH: hex head	PPH: phillips pan head	
HHF: hex head flange	PPHTF: phillips pan head thread forming	
HHFTF: hex head flange thread forming		

Touch Up Paint

Exmark black touch up spray paint – gloss black.

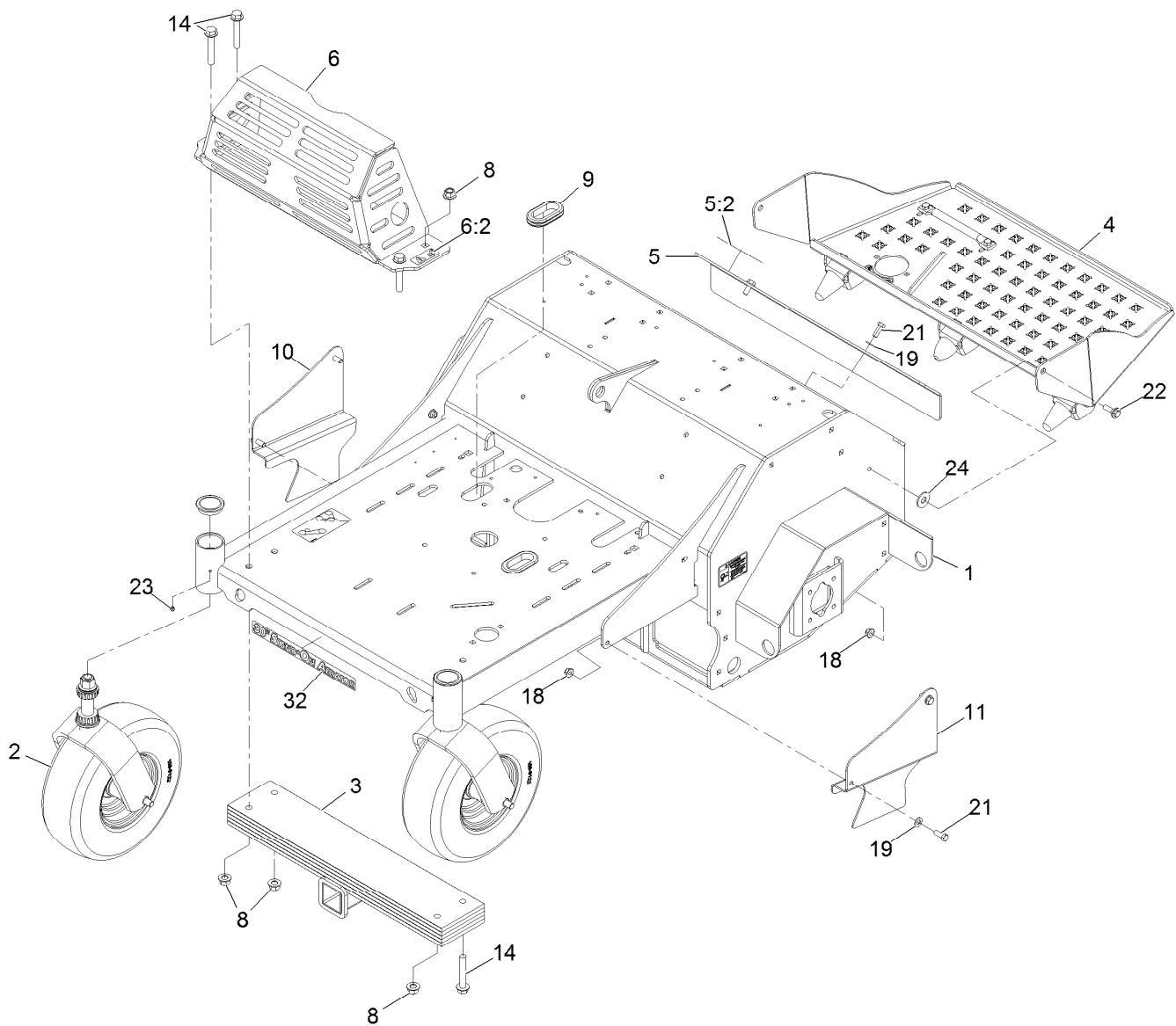
Exmark red touch up paint (spray paint – P/N 1-850337 - .6 oz liquid bottle – P/N 103-9140).



If your Exmark dealer does not have the Exmark part in stock, Exmark will get the parts to the dealer the next business day or the part will be FREE Guaranteed!! (Some restrictions apply. See your participating Exmark Dealer for details.)

Contents

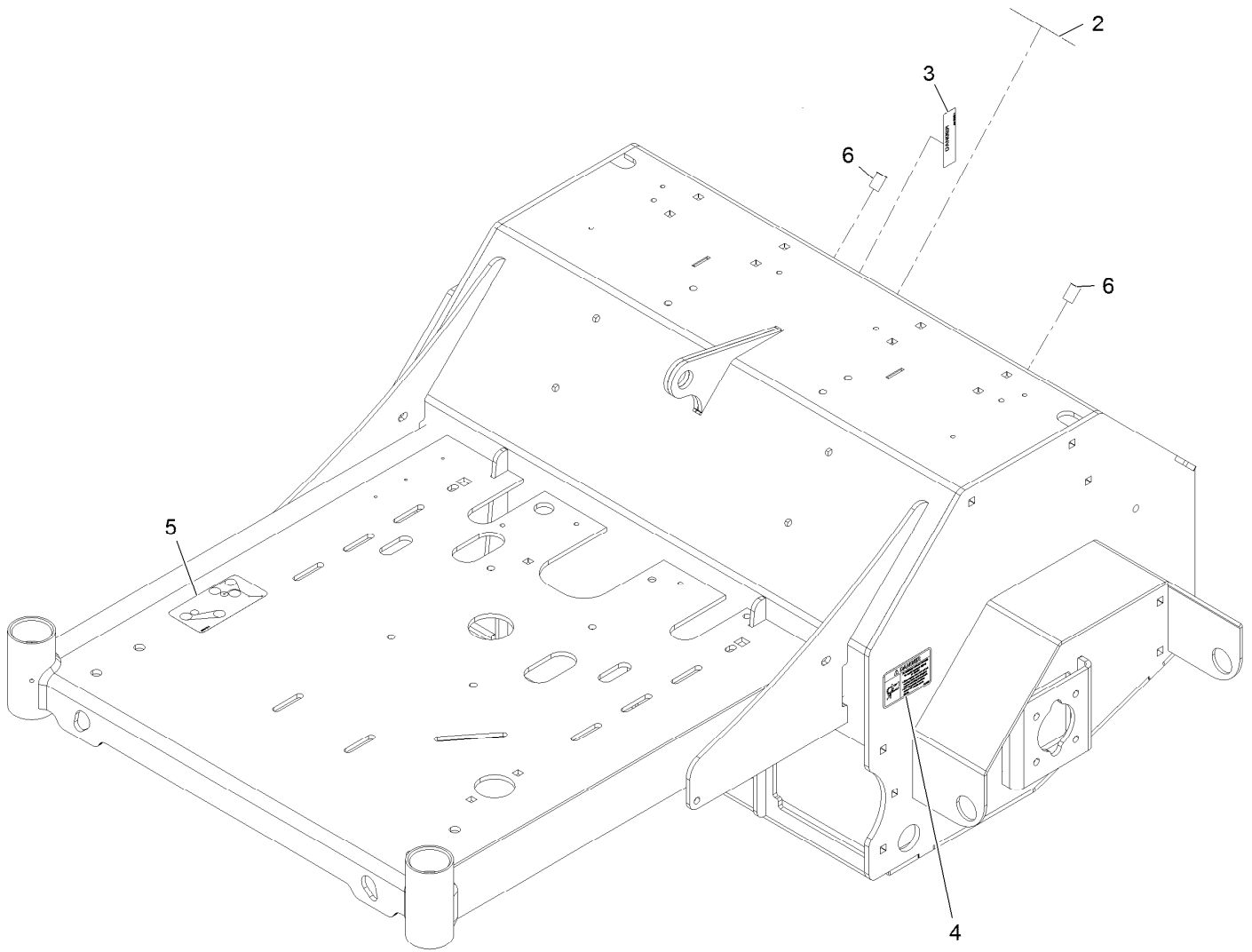
Main Frame Assembly	4
Main Frame W//Decals Assembly No. 116-8134	5
Caster Wheel and Fork Assembly	6
Platform W/Decal and Rocker Assembly	7
Tower Assembly	8
Motion Control Assembly	9
Ground Drive Assembly	10
RH Transaxle No. 116-9712	12
LH Transaxle No. 116-9713	14
Axle and Bearing Assembly No. 116-9545	16
Idler Arm Assembly No. 116-9307	17
Auxiliary Hydraulic Assembly	18
Manifold W/Check and Relief Valve Assembly No. 116-9549	20
Tine Assembly	21
RH Tine Wheel Assembly No. 116-6738	22
LH Tine Wheel Assembly No. 116-6739	23
Fuel Assembly	24
Engine Assembly	25
Electrical Assembly	26



Main Frame Assembly

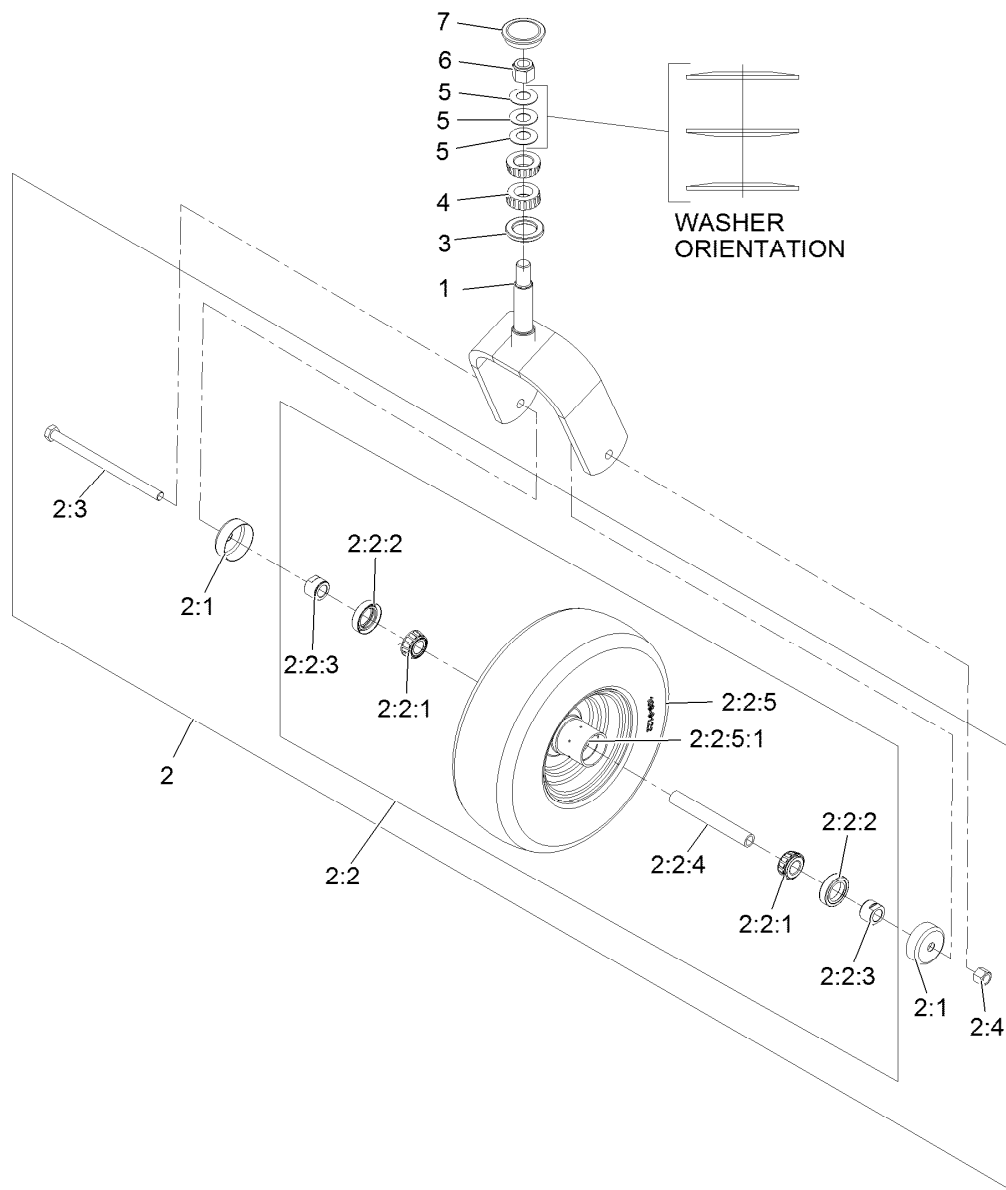
Ref.	Part Number	Qty.	Description	Ref.	Part Number	Qty.	Description
1	116-8134	1	Frame-Main ASM W/Decals	10	116-6612-01	1	Guard-Chain, RH
2	116-6536-01	2	Front Caster ASM W/Fork ●	11	116-6611-01	1	Guard-Chain, LH
3	116-6536-01	1	Weight	14	3234-40	4	Screw-HF
4	116-9134	1	Platform ASM W/Decal & Rocker	18	104-8301	6	Nut-Nyloc 3/8-16 Flg
5	116-6939	1	Access Cover ASM	19	3256-24	6	Washer-3/8 Sae
5:2	116-6459	1	Decal-Tine Ground Operation	21	323-6	6	Screw-HH 3/8-16 X 1
6	116-8258	1	Muffler Guard ASM	22	614672	2	Screw-Shoulder 3/8-16 X 1.295
6:2	115-2047	2	Decal-Surface, Hot	23	1-811010	2	Plug
8	99-5107	4	Nut-Lock 1/2-13	24	3256-6	2	Washer
9	126-0015	2	Grommet	32	116-6952	1	Decal-Stand-On Aerator 30

● Not serviced separately



Main Frame W//Decals Assembly No. 116-8134

<i>Ref.</i>	<i>Part Number</i>	<i>Qty.</i>	<i>Description</i>
2	116-6455	1	Decal-Danger Rotating Tines
3	98-5954	1	Decal-Missing Cover
4	116-6456	2	Decal-Danger Chain Drive
5	116-9391	1	Decal-Belt Routing
6	32148-10	2	Insert-Nut

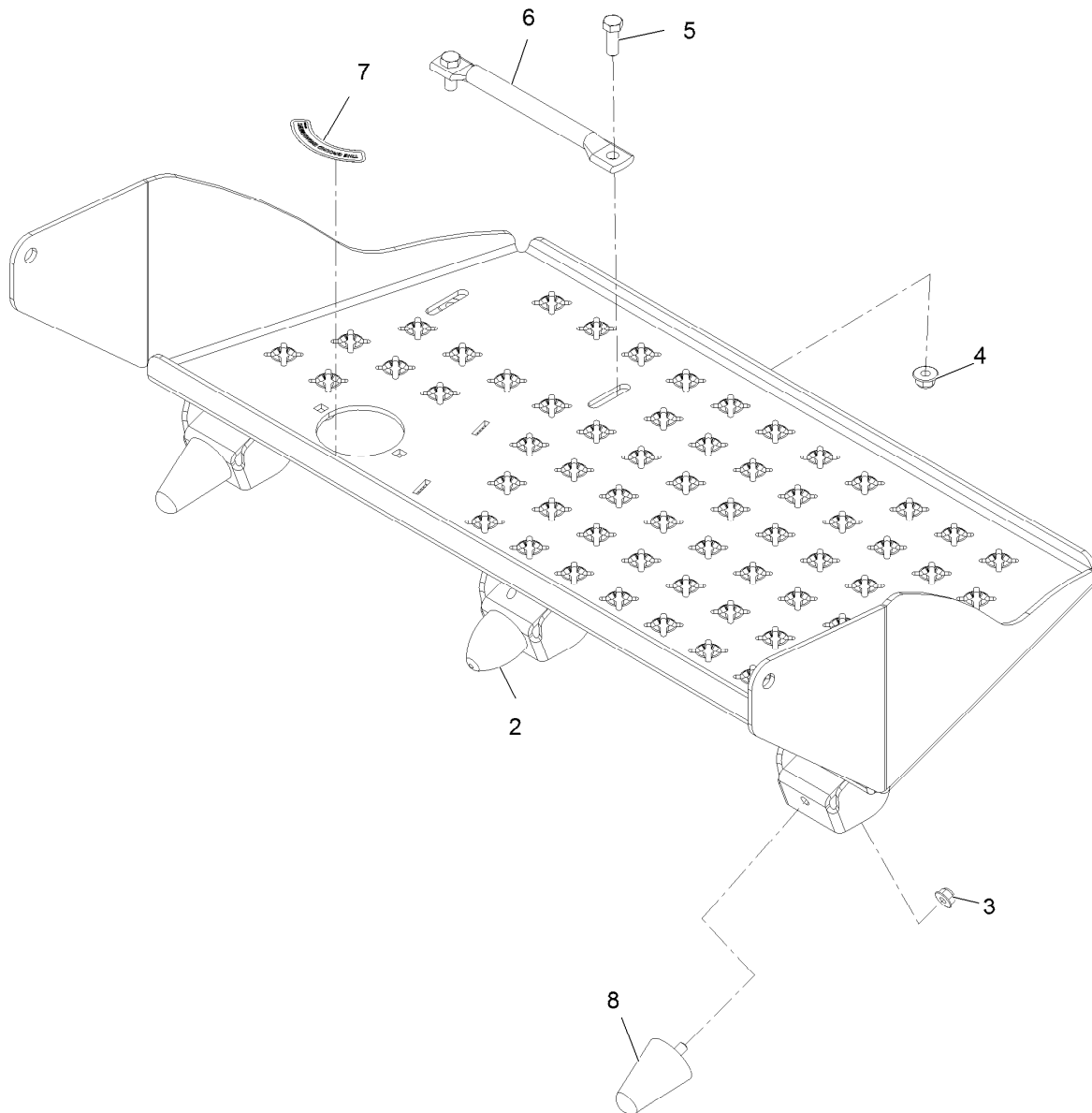


Caster Wheel and Fork Assembly

Ref.	Part Number	Qty.	Description	Ref.	Part Number	Qty.	Description
1	116-6704-01	1	Caster	2:2:5:1	1-633584	1	Bearing-Cup
2	109-9126	1	Wheel And Tire ASM	2:3	325-42	1	Screw-HH 1/2-13 X 8
2:1	103-2768	2	Guard-Seal	2:4	3296-23	1	Nut-Nyloc 1/2-13
2:2		1	Wheel And Tire ASM ●	3	116-5647	1	Seal-Grease
2:2:1	1-633585	2	Bearing-Cone Tapered Roller	4	1-543509	2	Cone-Bearing Tapered Roller
2:2:2	103-0063	2	Seal-Double Lip	5	1-633508	3	Washer-Spring Disc
2:2:3	103-3051	2	Spacer-Nut ■	6	3296-51	1	Nut-Nyloc 3/4-10
2:2:4	103-3155	1	Axle-Caster	7	103-4882	1	Cap-Grease
2:2:5		1	Wheel And Tire ASM ●				

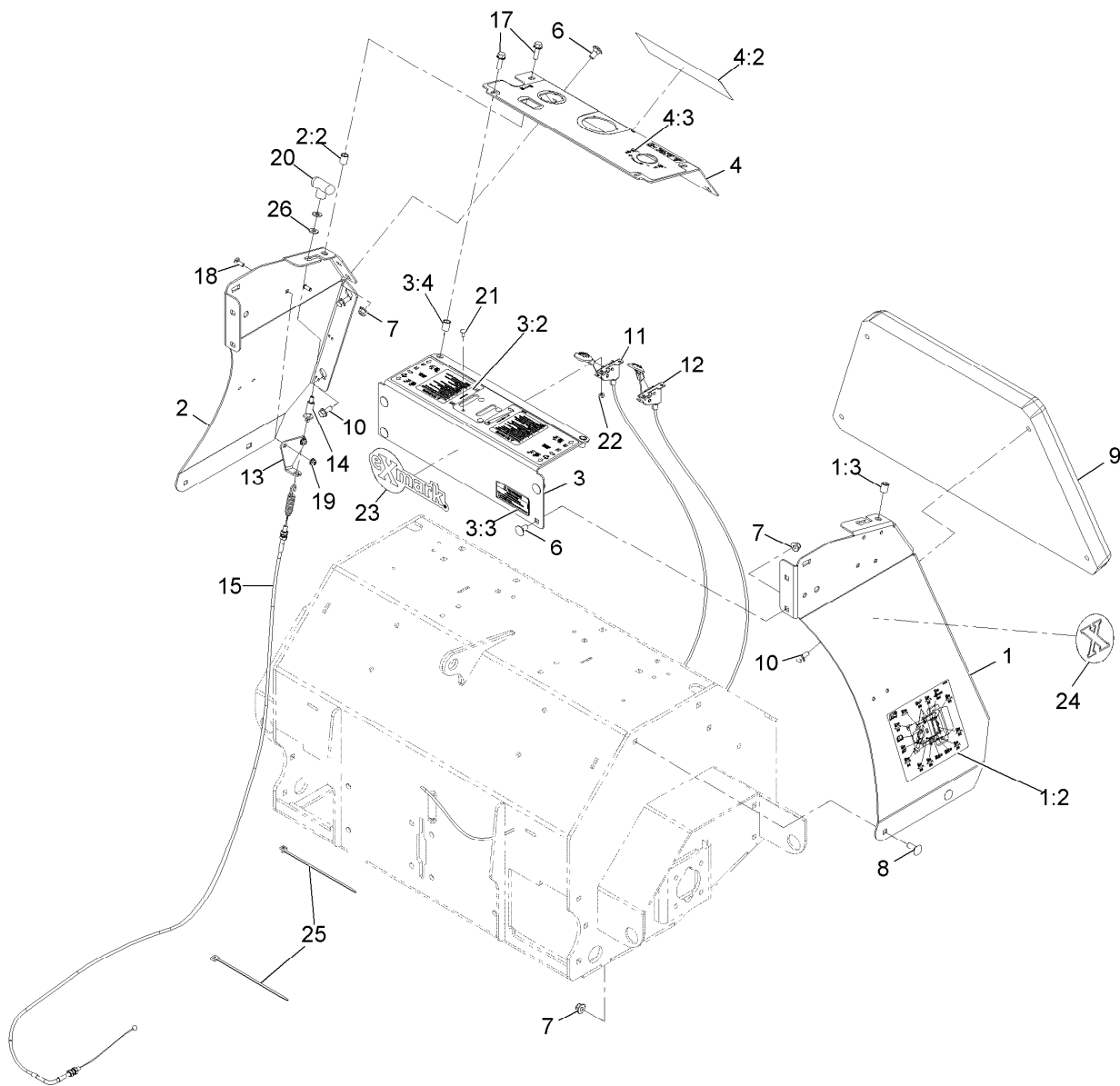
● Not serviced separately

■ Use Pro-Lock, Nut Type (P/N 1-840022, .5ml tube) on threads.



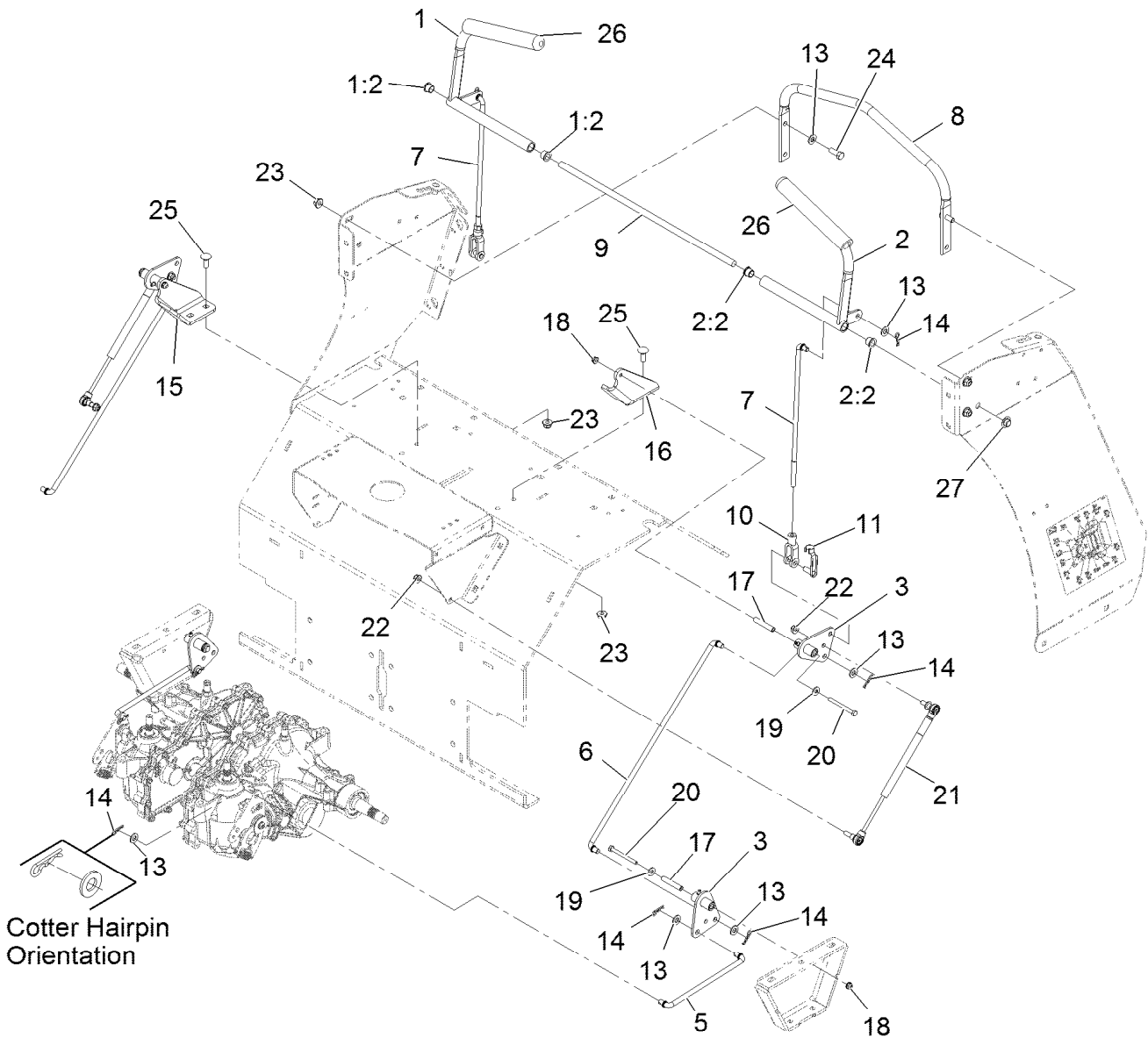
Platform W/Decal and Rocker Assembly

<i>Ref.</i>	<i>Part Number</i>	<i>Qty.</i>	<i>Description</i>
2	114-1926	1	Bumper-Rubber
3	104-8300	3	Nut-Nyloc 5/16-18 Flg
4	104-8301	2	Nut-Nyloc 3/8-16 Flg
5	323-6	2	Screw-HH 3/8-16 X 1
6	116-8950-03	1	Rocker-Foot Pedal
7	116-6460	1	Decal-Tine Ground Engagement
8	114-1925	2	Bumper-Rubber



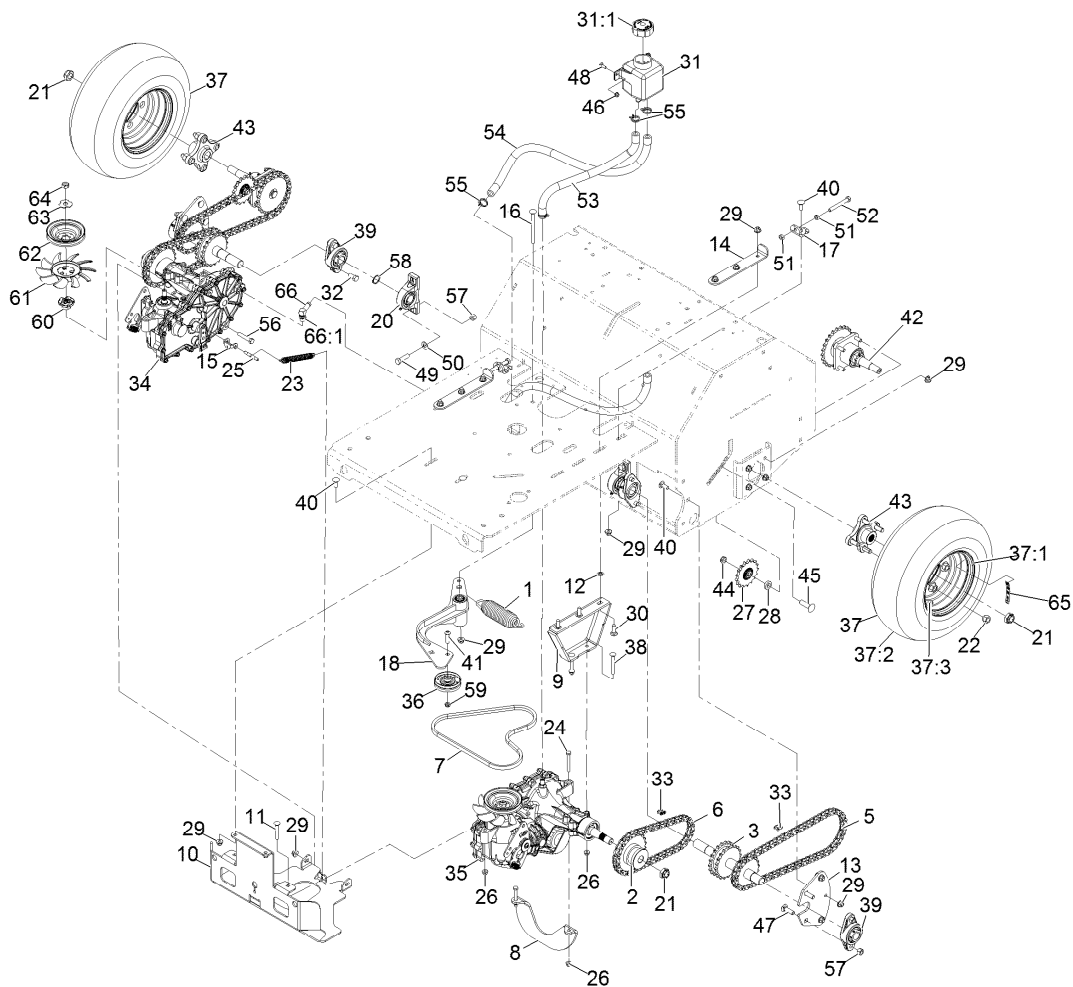
Tower Assembly

Ref.	Part Number	Qty.	Description	Ref.	Part Number	Qty.	Description
1	116-9386	1	Panel-Side,LH W/Decals-Black	9	116-6765	1	Cushion, Grey
1:2	116-9392	1	Decal-Service Aid Ce	10	3234-5	4	Screw-HH Flg 5/16-18 X 3/4
1:3	32148-7	1	Nut-Insert	11	109-9147	1	Control-Choke
2	116-7658	1	ASM-Panel,Side RH (Black)	12	109-3958	1	Control-Throttle
2:2	32148-7	1	Nut-Insert	13	116-6630	1	Bracket-Cable, Brake
3	126-3135	1	ASM-Plate W/Decal	14	116-7504	1	Link-Cable, Brake
3:2	116-7027	1	Decal-Control Panel Warning	15	116-7503	1	Cable-Brake
3:3	116-6457	1	Decal-Warning Stored Energy	17	3234-29	4	Screw-HH Flg 5/16-18 X 1
3:4	32148-7	2	Nut-Insert	18	3229-1	2	Bolt-Carriage 1/4-20 X 3/4
4	116-9141	1	ASM-Console W/Decal	19	104-7201	2	Nut-Nyloc 1/4-20 Flg
4:2	116-7029	1	Decal-Slope Warning	20	116-7607	1	Knob-Tee
4:3	116-9132	1	Decal-Danger, Control Panel	21	1-807513	4	Bolt-Carriage #10-24 X 1/2
6	3231-1	6	Bolt-Carriage 3/8-16 X 3/4	22	3296-2	4	Nut-Nyloc #10-24
7	104-8301	10	Nut-Nyloc 3/8-16 Flg	23	103-2882	1	Decal, Exmark Logo
8	3231-2	4	Bolt-Carriage 3/8-16 X 1	24	116-7034	2	Decal-Exmark X-Logo 3.85
				25	1-303335	2	Tie-Cable 7 15/16 (Large)
				26	3256-2	2	Washer-1/4 Std



Motion Control Assembly

Ref.	Part Number	Qty.	Description	Ref.	Part Number	Qty.	Description
1	116-6567	1	RH Control Handle ASM	15	116-6576-03	1	Bracket-Pivot, RH
1:2	116-4279	2	Bearing-Flange	16	116-6577-03	1	Bracket-Pivot, LH
2	116-6566	1	LH Control Handle ASM	17	116-7224	4	Spacer
2:2	116-4279	2	Bearing-Flange	18	104-7201	4	Nut-Nyloc 1/4-20 Flg
3	126-0340	4	Bellcrank W/Zerk	19	3256-2	4	Washer-1/4 Std
5	116-6722	2	Link-Control, Hydro	20	321-14	4	Screw-HH 1/4-20 X 2 3/4
6	116-9298	2	Link-Control, Bell Crank	21	116-0027	2	Damper-Control, Motion
7	116-6730	2	Link-Control, Bell Crank	22	104-8300	4	Nut-Nyloc 5/16-18 Flg
8	116-6608-03	1	Bar-Reference	23	104-8301	8	Nut-Nyloc 3/8-16 Flg
9	116-6607	1	Shaft-Pivot, Control	24	323-6	4	Screw-HH 3/8-16 X 1
10	1-633131	2	Yoke-Linkage, Brake	25	3231-2	4	Bolt-Carriage 3/8-16 X 1
11	103-2399	2	Pin-Clevis Spring 3/8	26	103-8153	2	Grip-Lever, Control
13	3256-24	14	Washer-3/8 Sae	27	32112-14	2	Nut-Push
14	1-806003	10	Hairpin-Cotter				

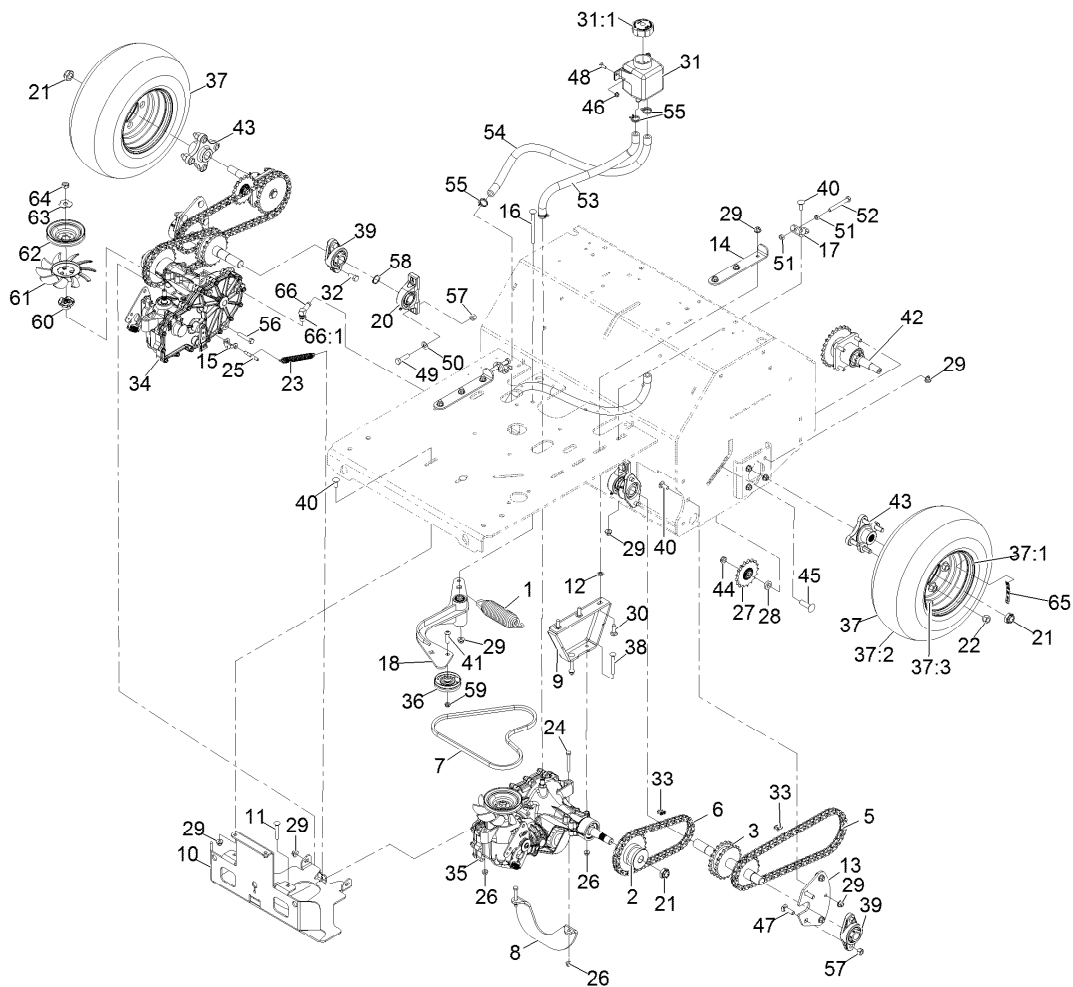


Ground Drive Assembly

Ref.	Part Number	Qty.	Description	Ref.	Part Number	Qty.	Description
1	116-6317	1	Spring-Extension	27	116-6719	2	Sprocket-Idler, 17T
2	116-9305	2	Hub-Drive, Chain	28	104-8417	2	Washer
3	116-9684	2	Jackshaft	29	104-8301	27	Nut-Nyloc 3/8-16 Flg
5	116-6895	2	Chain-Roller, #50, 65 Links	30	3231-25	6	Bolt-Carriage 3/8-16 X 1 1/4
6	116-6896	2	Chain-Roller #50, 47 Pitches	31	109-2250	1	Vent-Tank, Hydro
7	116-8874	1	Belt-4L Section	31:1	109-3320	1	Cap-Reservoir, HYD
8	116-9127-03	1	Angle Brace	32	116-7109	4	Screw-HH
9	116-9710-03	2	Mount-Transmission	33	116-6897	4	Link-Connecting, #50
10	116-9711-03	1	Guard-Transmission	34	116-9712	1	RH Transaxle ASM (No Fan)
11	3230-7	2	Bolt-Carriage 5/16-18 X 2 1/4	35	116-9713	1	LH Transaxle ASM (No Fan)
12	107-3154	6	Nut-Push 3/8-16	36	116-9715	1	Pulley-Idler
13	116-6596-01	2	Plate-Jackshaft	37	116-6932	2	Tire ASM (16 X 6.50-8)
14	116-6619	2	Plate-Adjustment, Transmission	37:1	116-6977	1	Rim (8 X 5.375)
15	116-7597	1	Yoke-Park Brake	37:2	116-6978	1	Tire (16 X 6.50-8, 4 Ply)
16	9000779	1	Bolt 3/8-16 X 4 1/2	37:3	232-27	1	Stem-Valve
17	116-6723	2	Bracket-Hydro, Adjust	38	3230-9	4	Bolt-Carriage 5/16-18 X 2 3/4
18	116-9307	1	Idler Arm ASM	39	116-6777	4	Bearing-Flange, 2 Bolt
20	116-6756	2	Bearing-Pillow Block	40	3231-2	10	Bolt-Carriage 3/8-16 X 1
21	116-2839	4	Nut-Lock	41	116-9927	1	Screw-HSBH
22	242-50	8	Nut-Lug 1/2-20	42	116-9545	2	Axle And Bearing ASM
23	76-4660	1	Spring-Door	43	116-3872	2	Hub-Offset
24	322-12	2	Screw-HH 5/16-18 X 2 1/2	44	3296-45	2	Nut-Nyloc 1/2-13 Thin
25	116-7596	1	Pin-Brake, Park	45	3233-14	2	Screw-CARR
26	104-8300	8	Nut-Nyloc 5/16-18 Flg	46	104-7201	2	Nut-Nyloc 1/4-20 Flg

● Not illustrated

■ Use Pro-Lock, Nut Type (P/N 1-840022, .5ml tube) on threads.

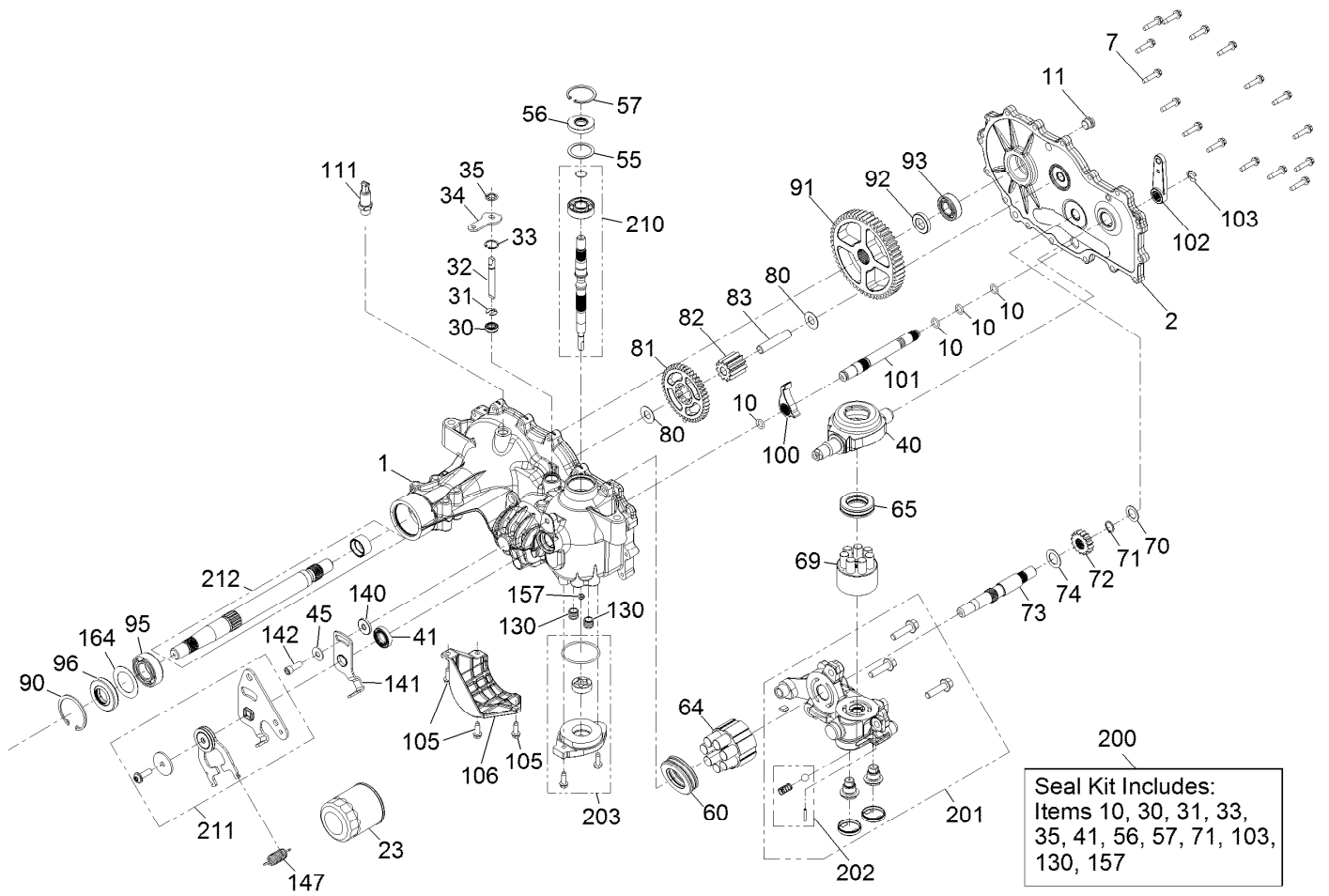


Ground Drive Assembly (continued)

Ref.	Part Number	Qty.	Description	Ref.	Part Number	Qty.	Description
47	3232-3	4	Bolt-Carriage 7/16-14 X 1 1/2	59	3296-59	1	Nut-Nyloc 3/8-16 Thin
48	3229-1	2	Bolt-Carriage 1/4-20 X 3/4	60	116-9705	2	Hub-Pulley
49	324-6	4	Screw-HH 7/16-14 X 1 1/2	61	116-9706	2	Fan
50	3256-25	4	Washer-7/16 Sae	62	116-9707	2	Pulley
51	3217-7	4	Nut-Hex 3/8-16	63	116-9708	2	Washer-Slotted
52	99-8664	2	Bolt-HH 3/8-16 X 3 Tap	64	116-9714	2	Nut-Jam, Hex 1/2-20 W/Patch ■
53	116-6775	1	Hose-Hydraulic	65	126-2054	2	Decal-Torque Wheel Lug-Hub
54	116-6776	1	Hose-Hydraulic	66	109-6449	1	Fitting-Elbow, 90
55	109-3322	4	Clamp-Hose	66:1	237-42	1	O-Ring
56	323-10	2	Screw-HH 3/8-16 X 2	99	109-9828	1	Bottle-Oil, 32Oz Hydraulic ●
57	3296-48	8	Nut-Nyloc 7/16-14				
58	32151-29	2	Ring-Retaining				

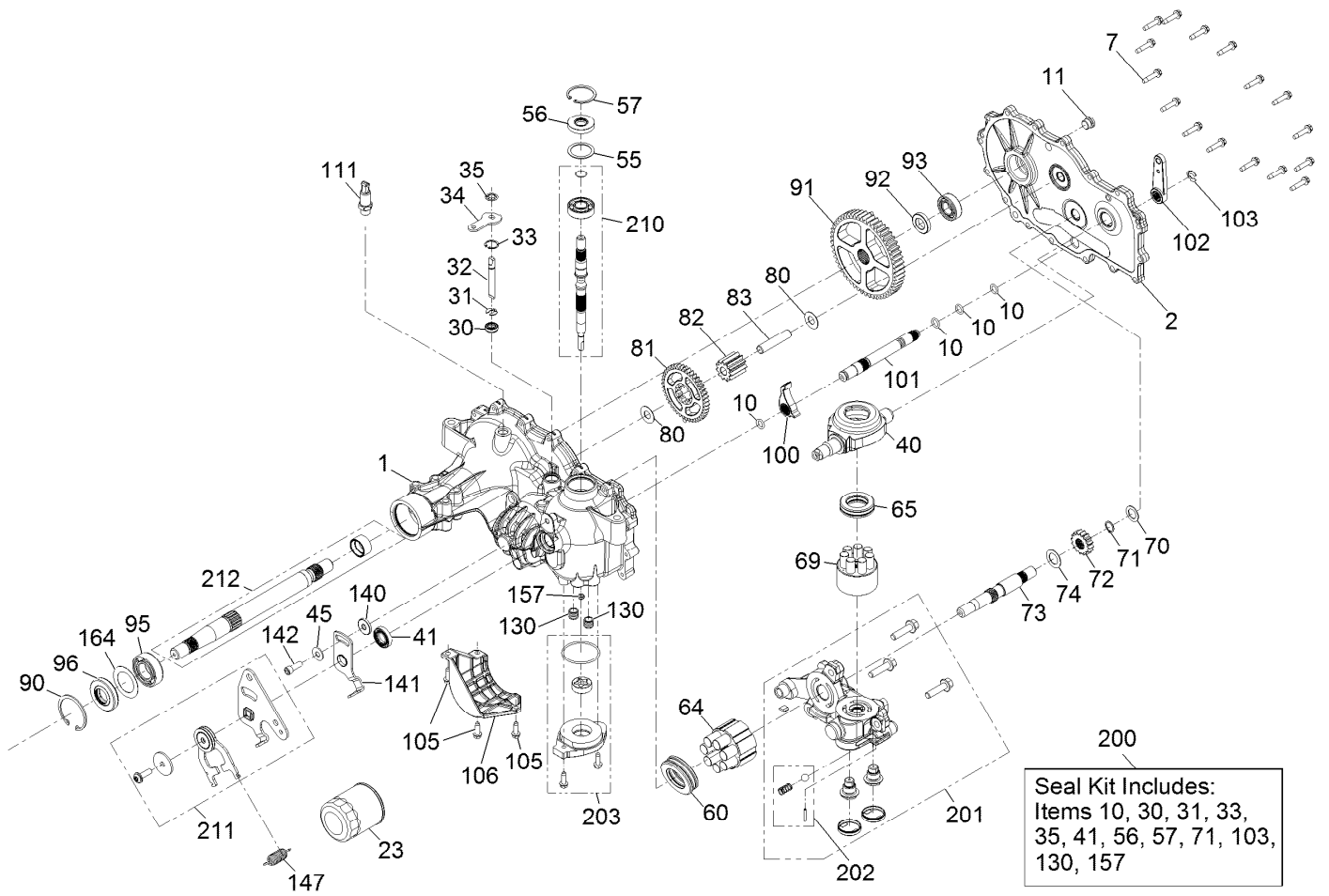
● Not illustrated

■ Use Pro-Lock, Nut Type (P/N 1-840022, .5ml tube) on threads.



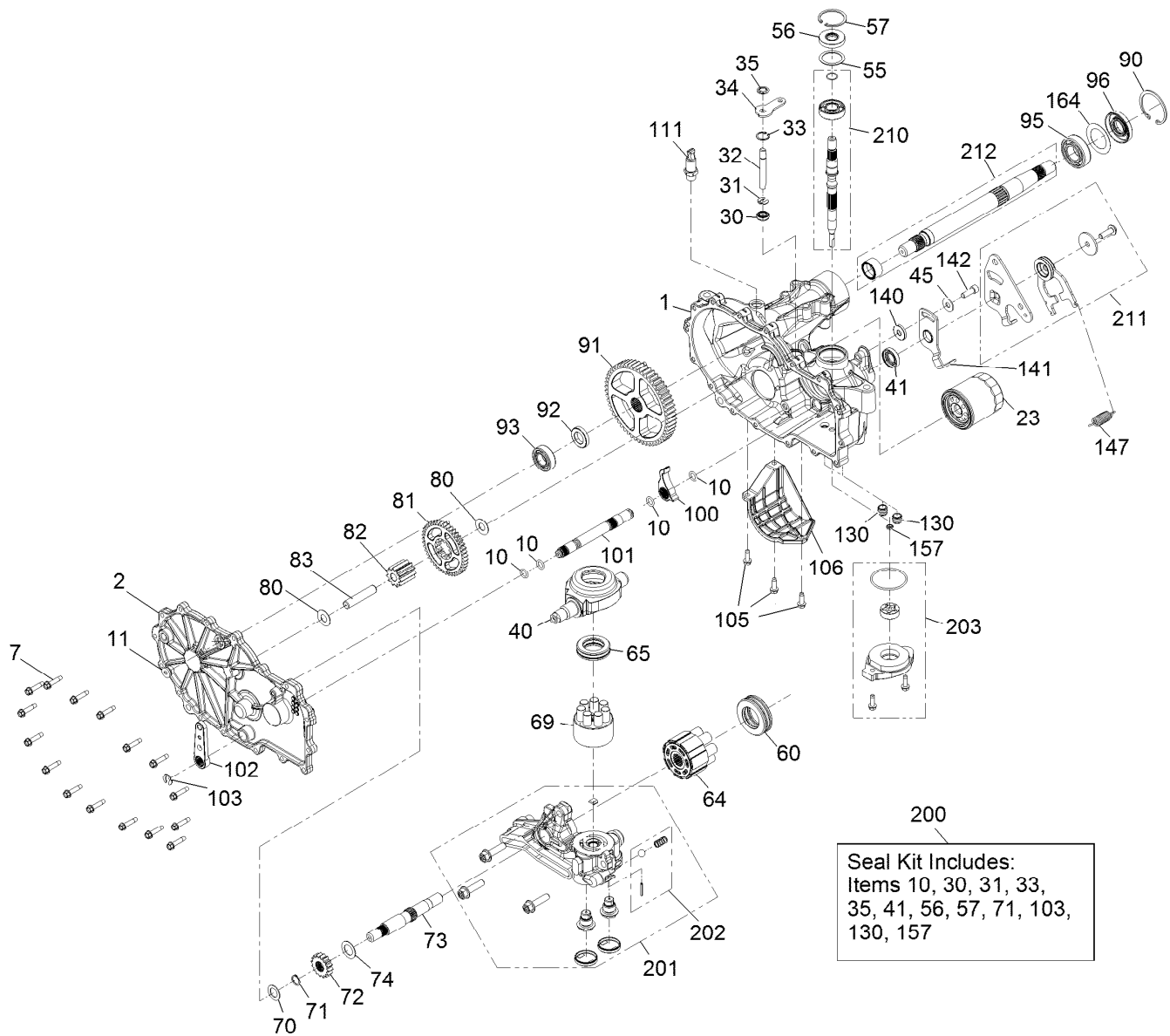
RH Transaxle No. 116-9712

Ref.	Part Number	Qty.	Description	Ref.	Part Number	Qty.	Description
1	114-1676	1	Main Housing Kit	69	110-8561	1	Pump Block ASM
2	117-5358	1	Housing Side Kit	70	104-5339	1	Washer-Flat
7	117-5359	16	Screw-HHF	71	104-5340	1	Ring-Retaining
10	114-1678	4	O-Ring	72	126-0788	1	Gear-16T
11	104-2189	1	Plug-Thread, Straight	73	114-1691	1	Shaft-Motor
23	109-3321	1	Filter-Hydraulic	74	104-5360	1	Washer
30	106-8676	1	Seal-Lip	80	94-1933	2	Washer
31	106-8677	1	Ring-Retaining, EXT	81	125-0000	1	Gear-43T
32	114-1685	1	Rod-Bypass	82	120-7974	1	Gear-11T
33	106-8679	1	Ring-Retaining, Int	83	104-5329	1	Pin-Jackshaft
34	106-8680	1	Arm-Bypass	90	104-2169	1	Ring-Retaining
35	106-8681	1	Ring-Retaining, EXT	91	114-1694	1	Gear-54T
40	104-5304	1	Swashplate-Trunnion	92	120-7975	1	Spacer
41	104-5313	1	Seal-Lip	93	126-0789	1	Bearing-Ball
45	114-8491	1	Washer	95	120-7976	1	Bearing-Ball
55	104-5308	1	Spacer	96	104-2144	1	Seal
56	104-5310	1	Seal-Lip	100	114-1697	1	Pawl-Brake
57	104-5309	1	Ring-Retaining	101	114-1698	1	Shaft-Brake, Inboard
60	109-2865	1	Bearing-Thrust	102	125-0021	1	Handle-Brake
64	114-1689	1	Motor Cylinder Block Kit	103	131-0906	1	Ring-Retaining, EXT
65	94-6922	1	Bearing-Thrust	105	104-2120	3	Screw



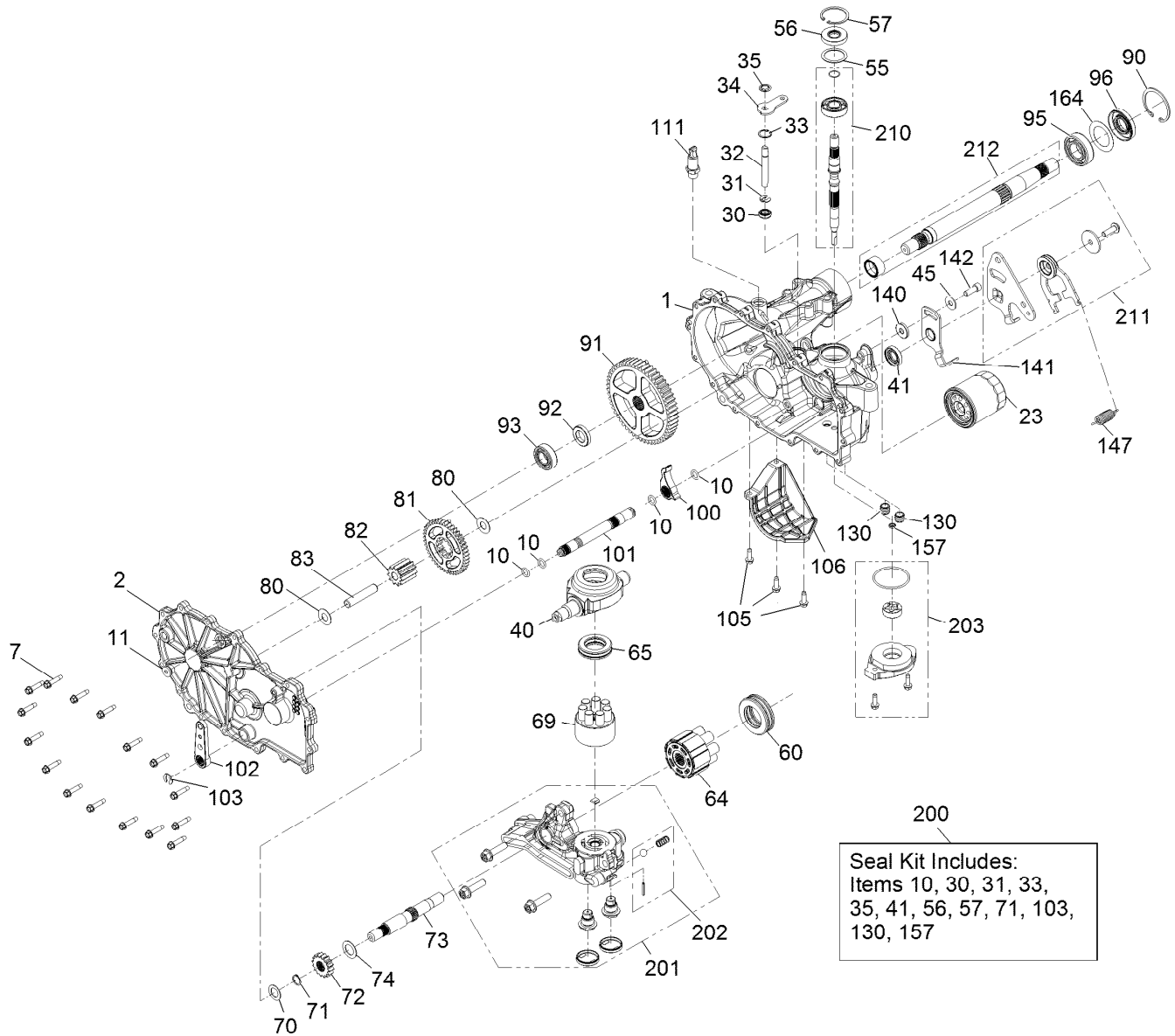
RH Transaxle No. 116-9712 (continued)

<i>Ref.</i>	<i>Part Number</i>	<i>Qty.</i>	<i>Description</i>	<i>Ref.</i>	<i>Part Number</i>	<i>Qty.</i>	<i>Description</i>
106	120-7981	1	Guard-Filter, RH	200	109-3537	1	Seal Kit
111	109-3278	1	Adapter-Straight	201	120-7982	1	RH Center Section Charge Kit
130	126-3251	2	Tube-Charge	202	114-8464	1	Charge Relief Kit
140	114-8458	1	Spacer	203	114-8465	1	Charge Kit
141	114-8459	1	Arm-Neutral, Right	210	117-5361	1	Input Shaft Kit
142	106-8682	1	Screw-Sh	211	126-2291	1	Control Arm Kit
147	115-8307	1	Spring-Extension	212	114-8470	1	Axle Shaft Kit
157	131-0908	1	Seal-Gerotor				
164	121-5745	1	Spacer				



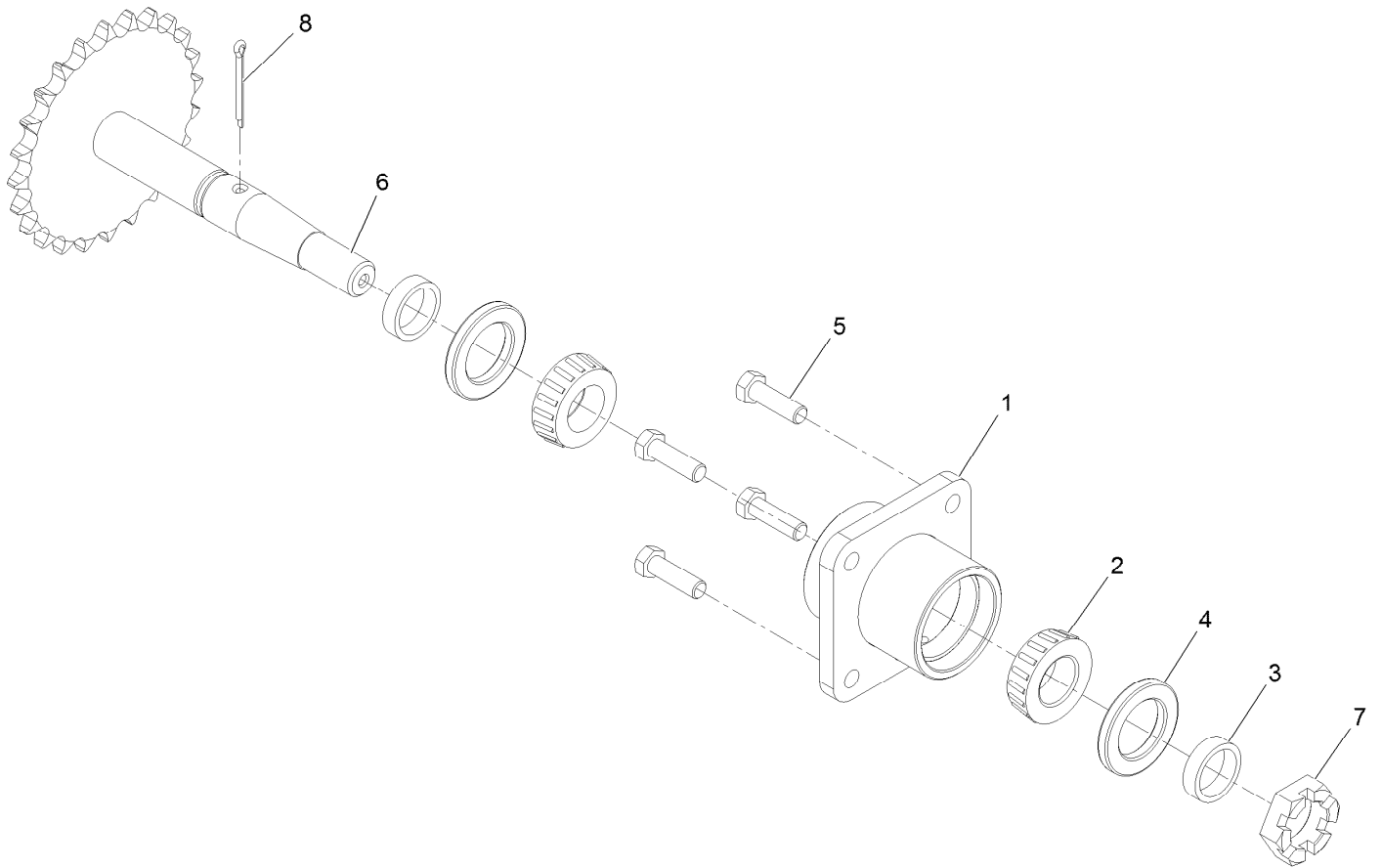
LH Transaxle No. 116-9713

Ref.	Part Number	Qty.	Description	Ref.	Part Number	Qty.	Description
1	114-8471	1	Main Housing Kit	69	110-8561	1	Pump Block ASM
2	114-8472	1	Side Cover Kit	70	104-5339	1	Washer-Flat
7	117-5359	16	Screw-HHF	71	104-5340	1	Ring-Retaining
10	114-1678	3	O-Ring	72	126-0788	1	Gear-16T
11	104-2189	1	Plug-Thread, Straight	73	114-1691	1	Shaft-Motor
23	109-3321	1	Filter-Hydraulic	74	104-5360	1	Washer
30	106-8676	1	Seal-Lip	80	94-1933	2	Washer
31	106-8677	1	Ring-Retaining, EXT	81	125-0000	1	Gear-43T
32	114-1685	1	Rod-Bypass	82	120-7974	1	Gear-11T
33	106-8679	1	Ring-Retaining, Int	83	104-5329	1	Pin-Jackshaft
34	106-8680	1	Arm-Bypass	90	104-2169	1	Ring-Retaining
35	106-8681	1	Ring-Retaining, EXT	91	114-1694	1	Gear-54T
40	104-5304	1	Swashplate-Trunnion	92	120-7975	1	Spacer
41	104-5313	1	Seal-Lip	93	126-0789	1	Bearing-Ball
45	114-8491	1	Washer	95	120-7976	1	Bearing-Ball
55	104-5308	1	Spacer	96	109-3537	1	Seal Kit
56	104-5310	1	Seal-Lip	100	114-1697	1	Pawl-Brake
57	104-5309	1	Ring-Retaining	101	114-1698	1	Shaft-Brake, Inboard
60	109-2865	1	Bearing-Thrust	102	125-0021	1	Handle-Brake
64	114-1689	1	Motor Cylinder Block Kit	103	103-9764	1	Clip-Retaining
65	94-6922	1	Bearing-Thrust	105	104-2120	3	Screw



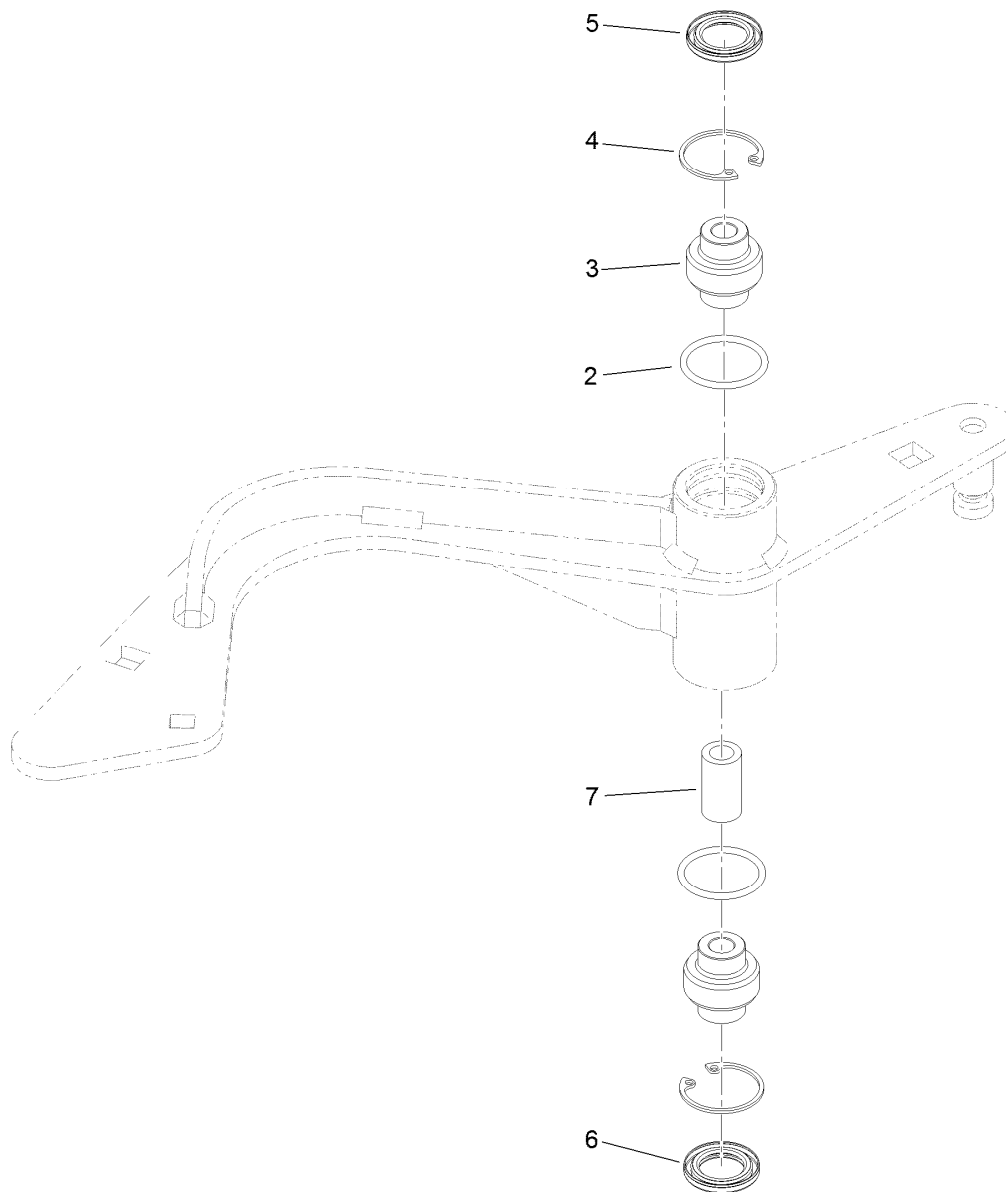
LH Transaxle No. 116-9713 (continued)

<i>Ref.</i>	<i>Part Number</i>	<i>Qty.</i>	<i>Description</i>	<i>Ref.</i>	<i>Part Number</i>	<i>Qty.</i>	<i>Description</i>
106	120-7981	1	Guard-Filter, RH	200	109-3537	1	Seal Kit
111	109-3278	1	Adapter-Straight	201	120-7980	1	LH Center Section Charge Kit
130	109-3537	2	Seal Kit	202	114-8464	1	Charge Relief Kit
140	114-8458	1	Spacer	203	114-8465	1	Charge Kit
141	114-8474	1	Arm-Neutral, Left	210	117-5361	1	Input Shaft Kit
142	106-8682	1	Screw-Sh	211	126-0790	1	Control Arm Kit
147	115-8307	1	Spring-Extension	212	114-8470	1	Axle Shaft Kit
157	109-3537	1	Seal Kit				
164	121-5745	1	Spacer				



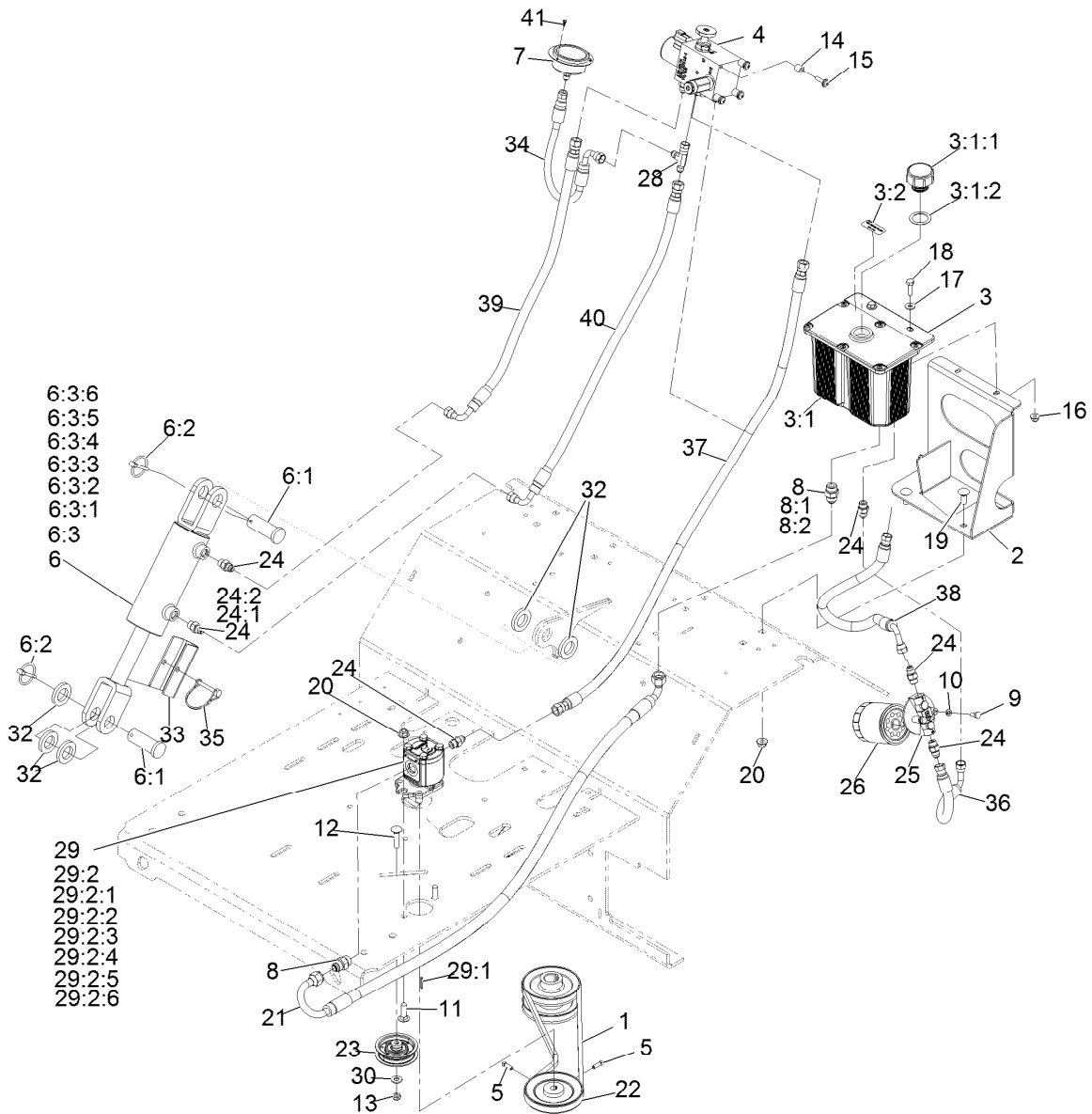
Axle and Bearing Assembly No. 116-9545

<i>Ref.</i>	<i>Part Number</i>	<i>Qty.</i>	<i>Description</i>
1	116-6746-01	1	Mount-Bearing, Wheel
2	1-543509	2	Cone-Bearing Tapered Roller
3	116-6758	2	Spacer
4	1-543511	2	Seal-Grease
5	323-7	4	Screw-HH 3/8-16 X 1 1/4
6	126-0459	1	Axle
7	99-3139	1	Nut
8	1-806800	1	Pin-Cotter 9/64 X 1 1/2



Idler Arm Assembly No. 116-9307

<i>Ref.</i>	<i>Part Number</i>	<i>Qty.</i>	<i>Description</i>
2	106-7159	2	O-Ring
3	103-3504	2	Bearing-Spherical
4	32120-10	2	Ring-Snap
5	103-3506	1	Seal-Single Lip
6	103-3505	1	Seal-Double Lip
7	1-603401	1	Spacer-Fender

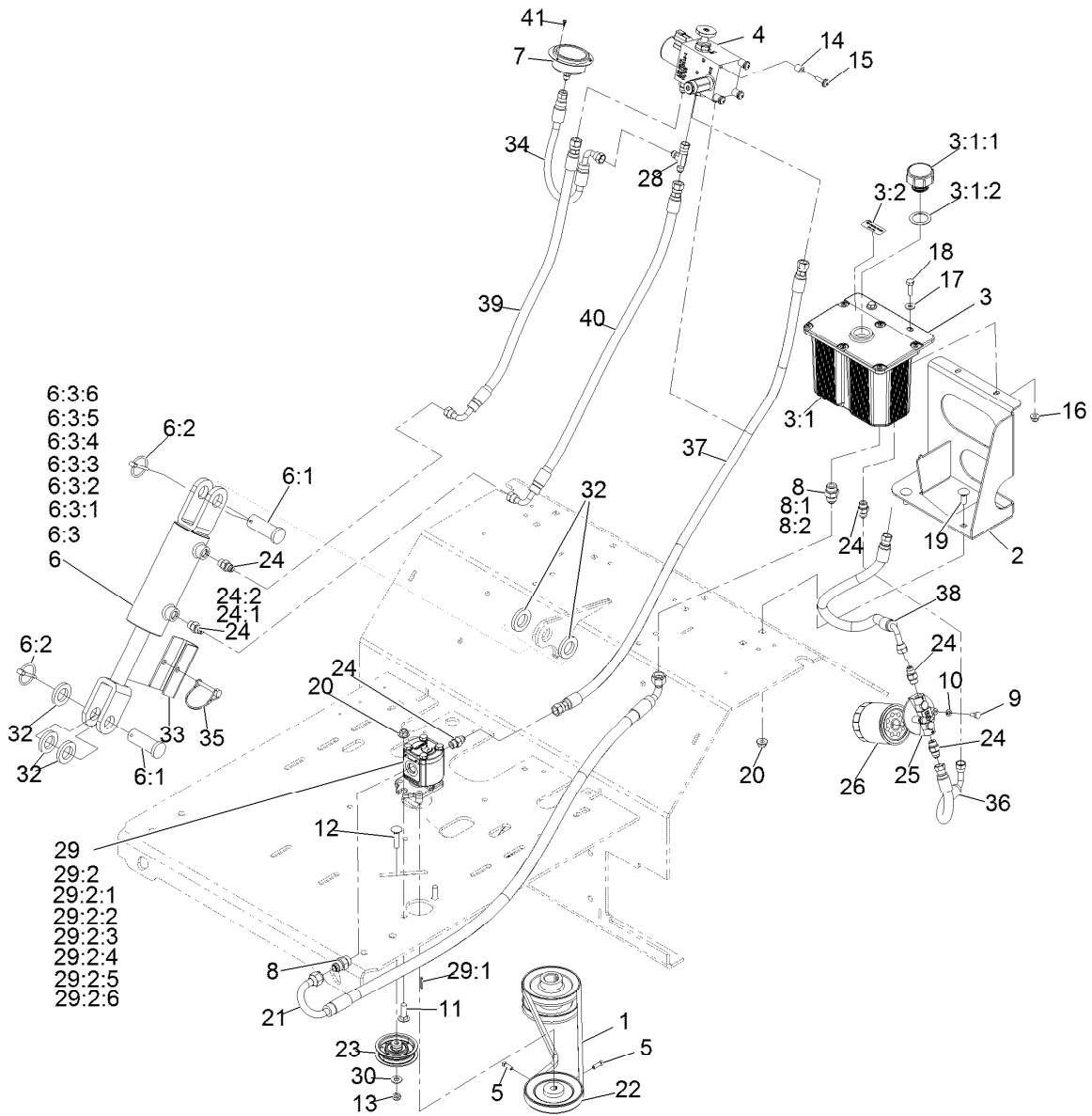


Auxiliary Hydraulic Assembly

Ref.	Part Number	Qty.	Description	Ref.	Part Number	Qty.	Description
1	116-8874	1	Belt-4L Section	7	116-8178	1	Gauge-Pressure
2	116-6618-03	1	Bracket-Tank, Hydraulic	8	1-603990	2	Adapter-Straight
3	116-7556	1	ASM-Reservoir W/Decal	8:1	1-603920	1	O-Ring-Sae #8
3:1		1	Tank-Hydraulic ●	8:2	1-603992	1	O-Ring-37 Flare #8
3:1:1	103-1948	1	Cap-Reservoir, HYD	9	321-3	2	Screw-HH 1/4-20 X 5/8
3:1:2	103-1949	1	Gasket-Cap	10	1-805004	2	Washer-Lock 1/4 Heavy
3:2	116-6990	1	Decal-Hydro Oil Aw-32	11	3231-25	2	Bolt-Carriage 3/8-16 X 1 1/4
4	116-9549	1	Valve-Manifold	12	3231-4	1	Bolt-Carriage 3/8-16 X 1 1/2
5	3241-6	2	Screw-SQH ■	13	3296-59	1	Nut-Nyloc 3/8-16 Thin
6	116-6969	1	HYD Cylinder ASM	14	22-7810	4	Spacer
6:1	116-7290	2	Pin-Clevis	15	110-9361	4	Screw-PPH, Sems
6:2	92-1298	2	Pin-Lynch	16	104-8300	2	Nut-Nyloc 5/16-18 Flg
6:3	127-3234	1	Seal Kit	17	3256-2	2	Washer-1/4 Std
6:3:1		1	O-Ring ●	18	322-5	2	Screw-HH 5/16-18 X 1
6:3:2		1	Backup Ring ●	19	3231-2	4	Bolt-Carriage 3/8-16 X 1
6:3:3		1	Psp Seal ●	20	104-8301	6	Nut-Nyloc 3/8-16 Flg
6:3:4		1	Bs Seal ●	21	116-9309	1	Hose-Hydraulic
6:3:5		1	Dust Seal ●	22	116-6667	1	Pulley
6:3:6		1	O-Ring ●	23	116-6760	1	Pulley-Idler, Flat

● Not serviced separately

■ Use Pro-Lock, Nut Type (P/N 1-840022, .5ml tube) on threads.

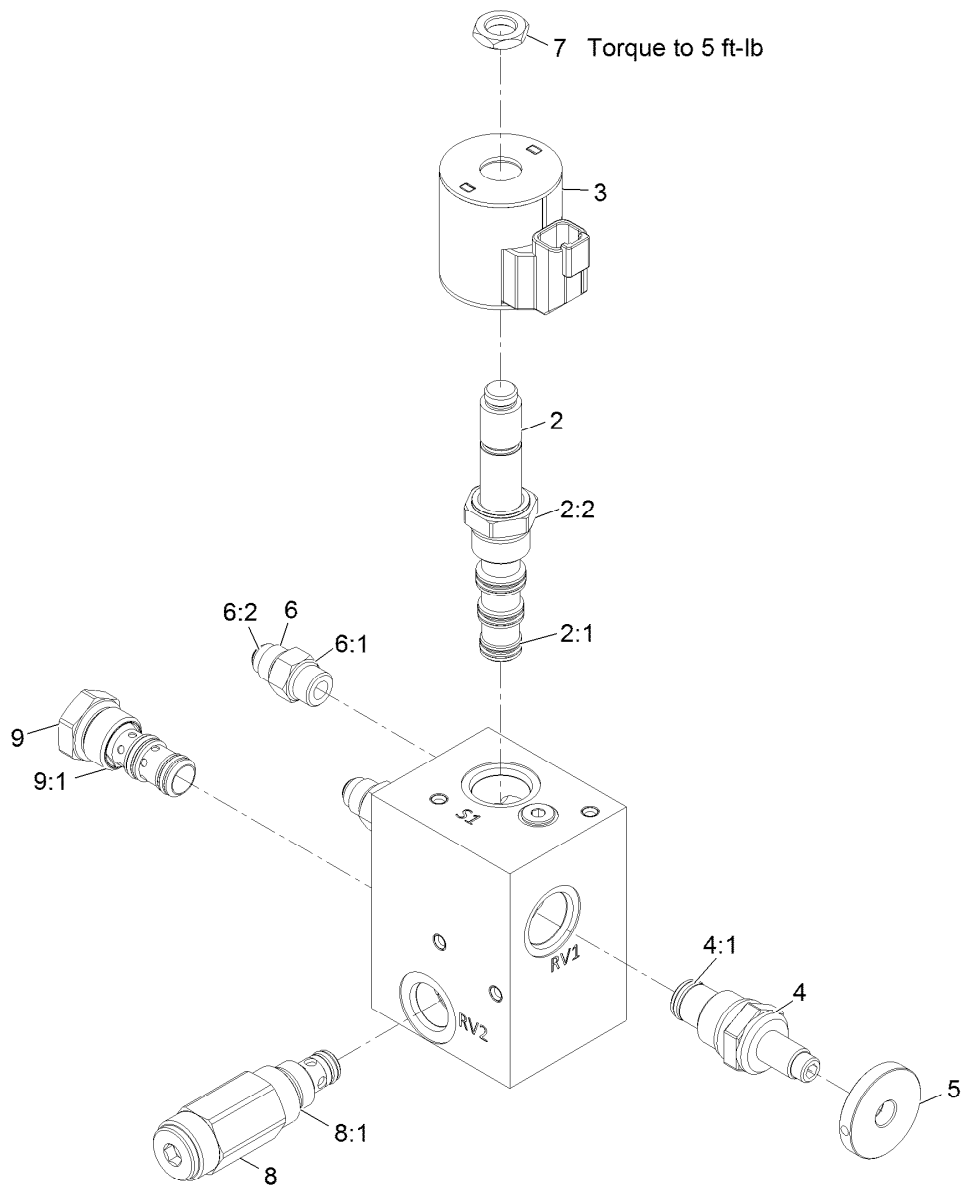


Auxiliary Hydraulic Assembly (continued)

Ref.	Part Number	Qty.	Description	Ref.	Part Number	Qty.	Description
24	103-2156	6	Adapter-Straight	29:2:5		1	Seal ●
24:1	1-603921	1	O-Ring-Sae #6	29:2:6		2	O-Ring ●
24:2	103-1020	1	O-Ring-37 Flare #6	30	3256-24	1	Washer-3/8 Sae
25	104-7836	1	Filter-Head	32	116-6781	5	Spacer
26	109-4180	1	Element, Oil Filter	33	116-7307-01	1	Stop-Cylinder
28	353-877	1	Fitting-HYD, Tee (Swivel)	34	116-8180	1	Hose-Hydraulic, Hp
29	116-9129	1	Hydraulic Pump ASM	35	112-2583	1	Pin-Locking
29:1	115-7855	1	Key-Square	36	116-6675	1	Hose-Hydraulic, LP
29:2	112-0199	1	Seal Kit	37	116-8151	1	Hose-Hydraulic
29:2:1		1	Seal-Anti Extrusion ●	38	116-9308	1	Hose-Hydraulic
29:2:2		1	Seal-Anti Extrusion ●	39	116-6677	1	Hose-Hydraulic
29:2:3		1	Seal-Shaft ●	40	116-6678	1	Hose-Hydraulic, Hp
29:2:4		1	Seal-Upper ●	41	363-8552	3	Screw-TAP,6-32X3/8,Phph,Stl,Rohs

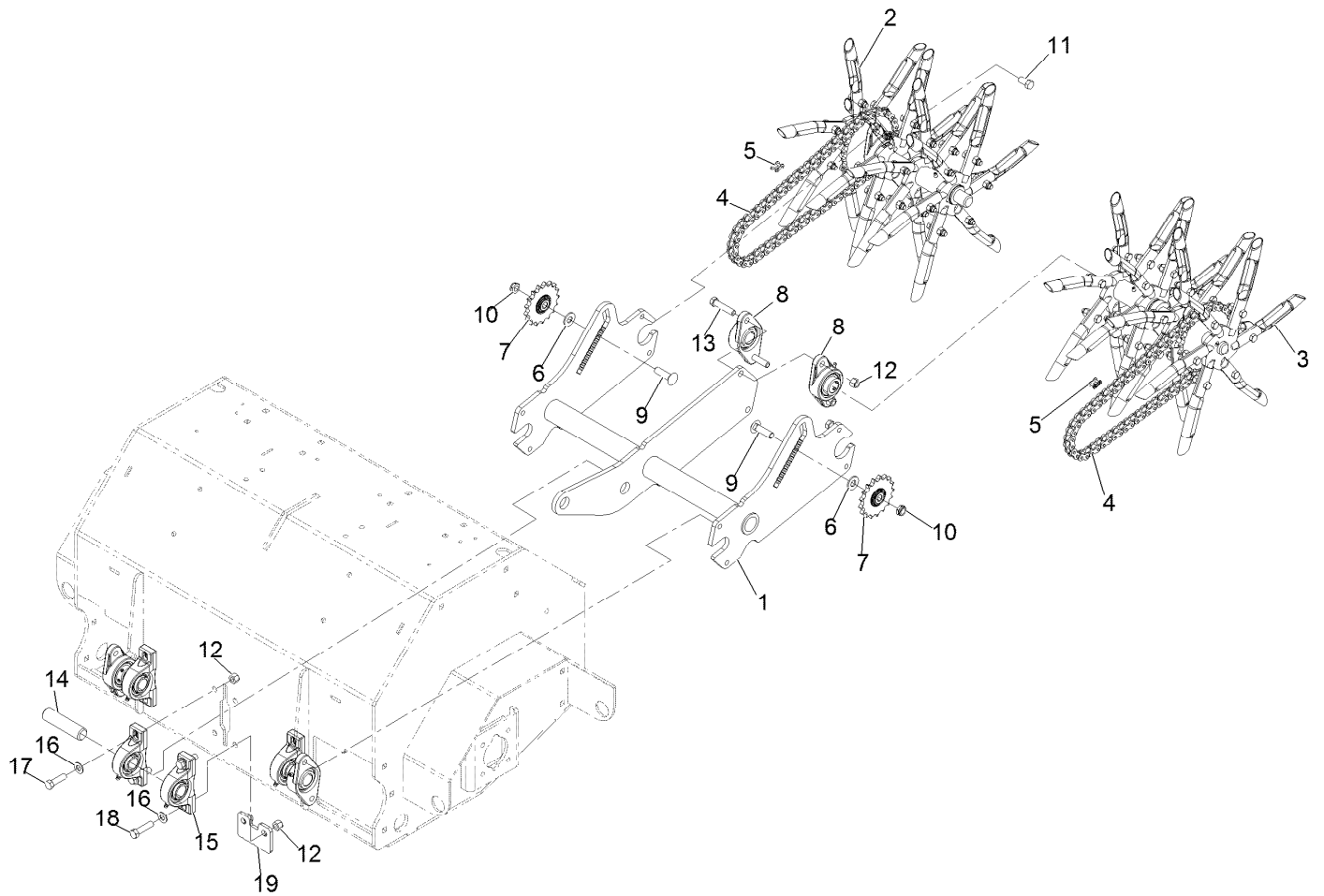
● Not serviced separately

■ Use Pro-Lock, Nut Type (P/N 1-840022, .5ml tube) on threads.



Manifold W/Check and Relief Valve Assembly No. 116-9549

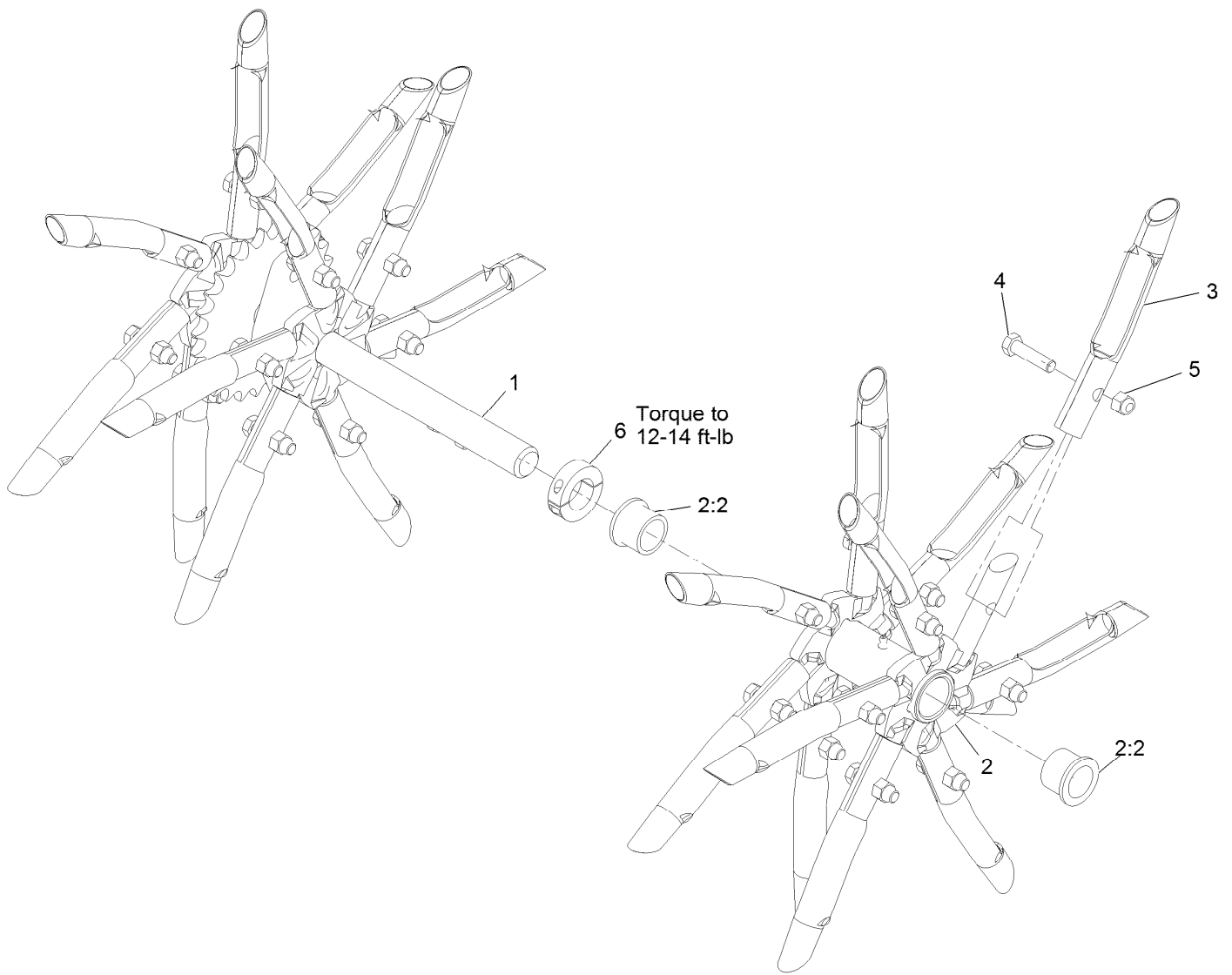
Ref.	Part Number	Qty.	Description
2	110-8906	1	Valve-Solenoid
2:1	110-8908	1	Spool Valve Seal Kit
2:2	110-2634	1	Nut-Coil
3	119-4619	1	Coil-Solenoid
4	116-9397	1	Valve-Relief, Poppet Style
4:1	116-9398	1	Relief Valve Seal Kit
5	116-9396	1	Knob (1.5 Dia)
6	103-2156	4	Adapter-Straight
6:1	1-603921	1	O-Ring-Sae #6
6:2	103-1020	1	O-Ring-37 Flare #6
7	110-2634	1	Nut-Coil
8	116-9716	1	Valve-Relief
8:1	116-9717	1	Seal Kit
9	116-9718	1	Valve-Check, P O
9:1	116-9719	1	Seal Kit



Tine Assembly

Ref.	Part Number	Qty.	Description	Ref.	Part Number	Qty.	Description
1	116-6553-03	1	Arm-Trail	11	116-7109	4	Screw-HH ●
2	116-6738	1	RH Tine Wheel ASM	12	3296-48	6	Nut-Nyloc 7/16-14
3	116-6739	1	LH Tine Wheel ASM	13	324-8	2	Screw-HH
4	116-6895	2	Chain-Roller, #50, 65 Links	14	116-6629	1	Shaft
5	116-6897	2	Link-Connecting, #50	15	116-6756	2	Bearing-Pillow Block ●
6	87-7270	2	Washer-Thrust	16	3256-25	4	Washer-7/16 Sae
7	116-6719	2	Sprocket-Idler, 17T	17	324-6	2	Screw-HH 7/16-14 X 1 1/2
8	116-6777	2	Bearing-Flange, 2 Bolt	18	324-7	2	Screw-HH
9	3233-14	2	Screw-CARR	19	116-7327-01	1	Plate-Downstop
10	3296-45	2	Nut-Nyloc 1/2-13 Thin				

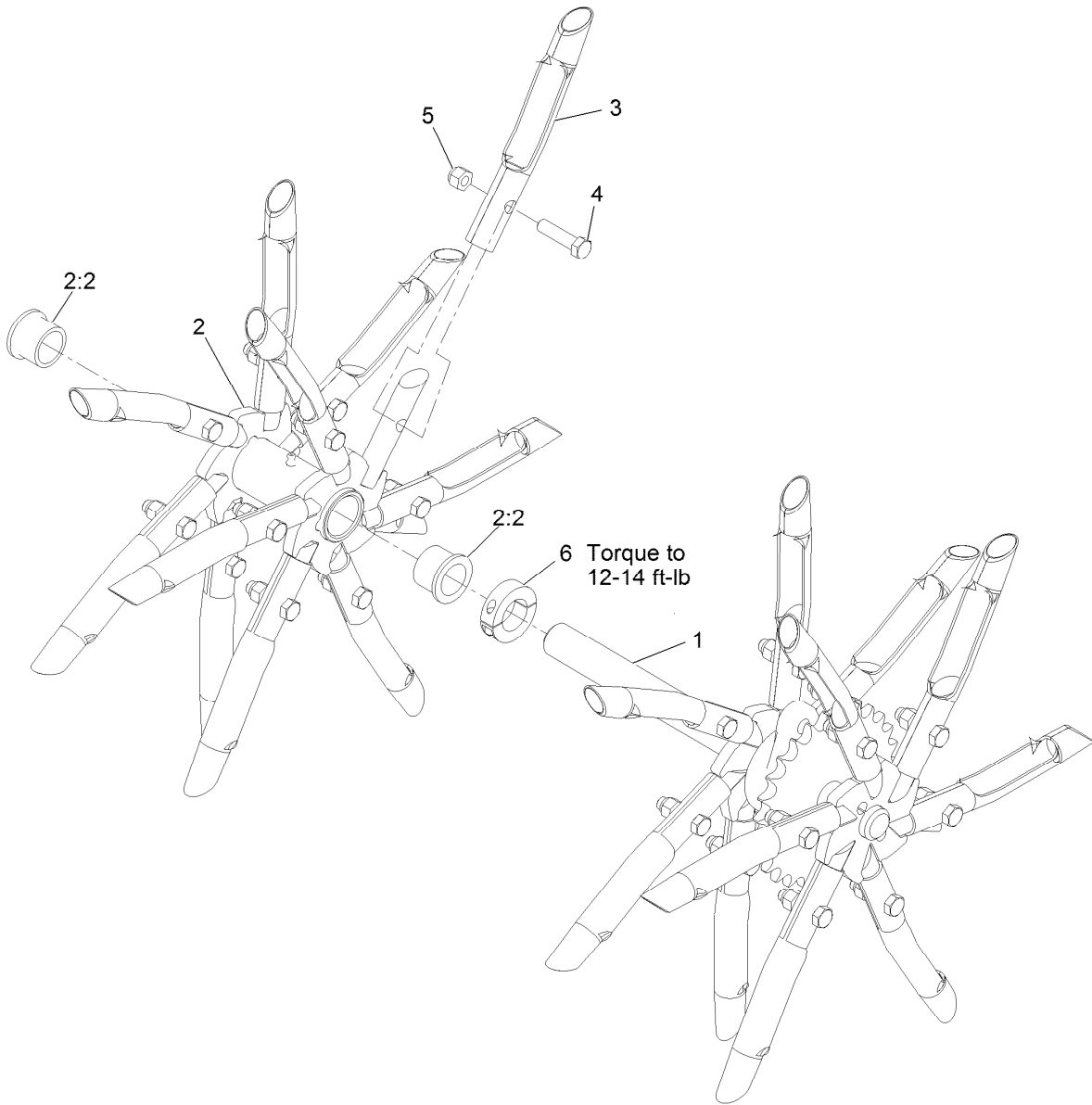
● Use Pro-Lock, Nut Type (P/N 1-840022, .5ml tube) on threads.



RH Tine Wheel Assembly No. 116-6738

Ref.	Part Number	Qty.	Description
1	116-6727	1	Shaft-Tine, RH
2	116-6731	1	Float Tine Shaft ASM
2:2	94-8949	2	Bushing-Flange
3	126-2143	24	Tine-Coring (3/4)
4	323-8	24	Screw-HH 3/8-16 X 1 1/2
5	3296-39	24	Nut-Nyloc 3/8-16
6	116-7271	1	Collar-Locking ●

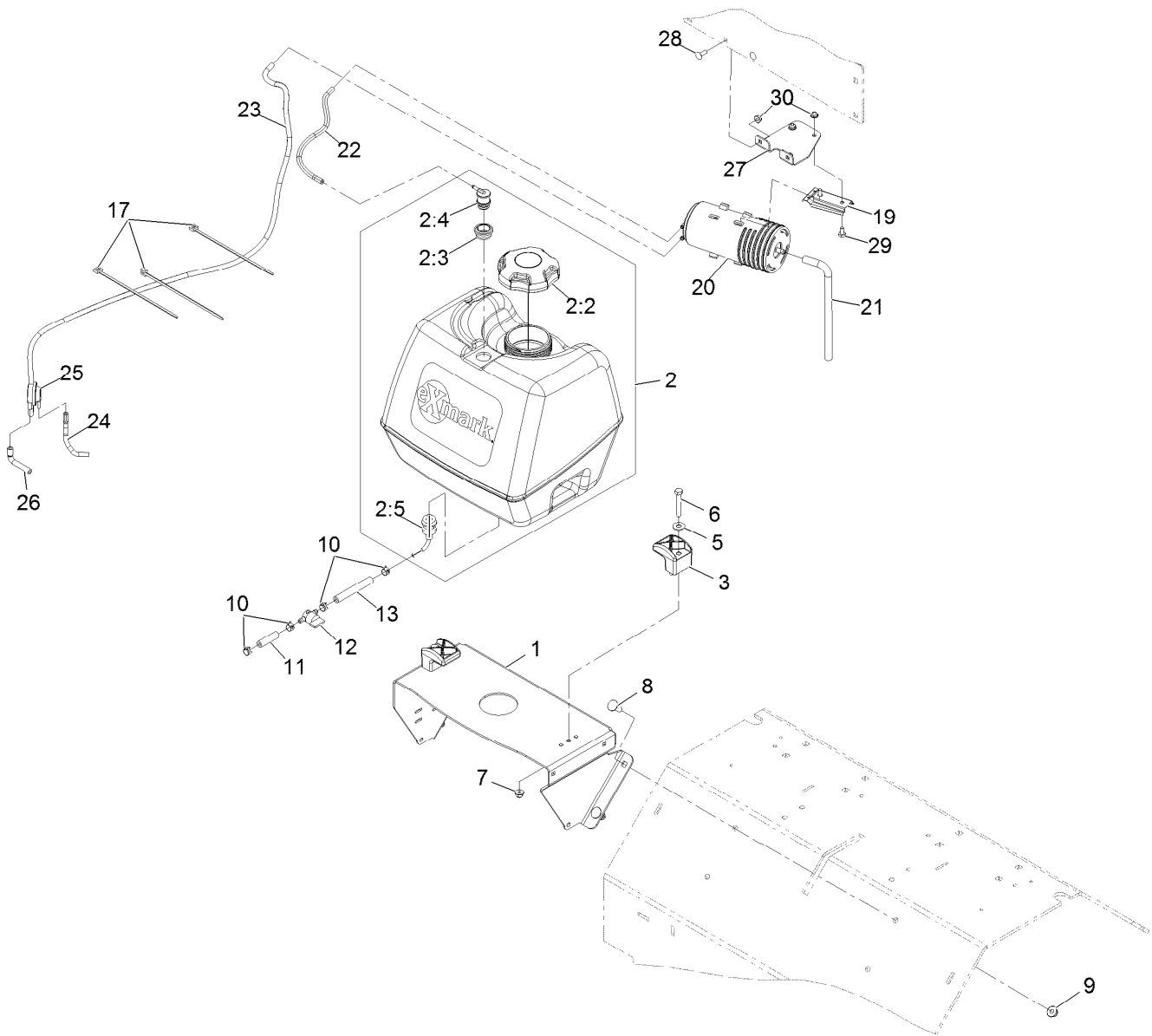
● Use Loctite® 243 on threads.



LH Tine Wheel Assembly No. 116-6739

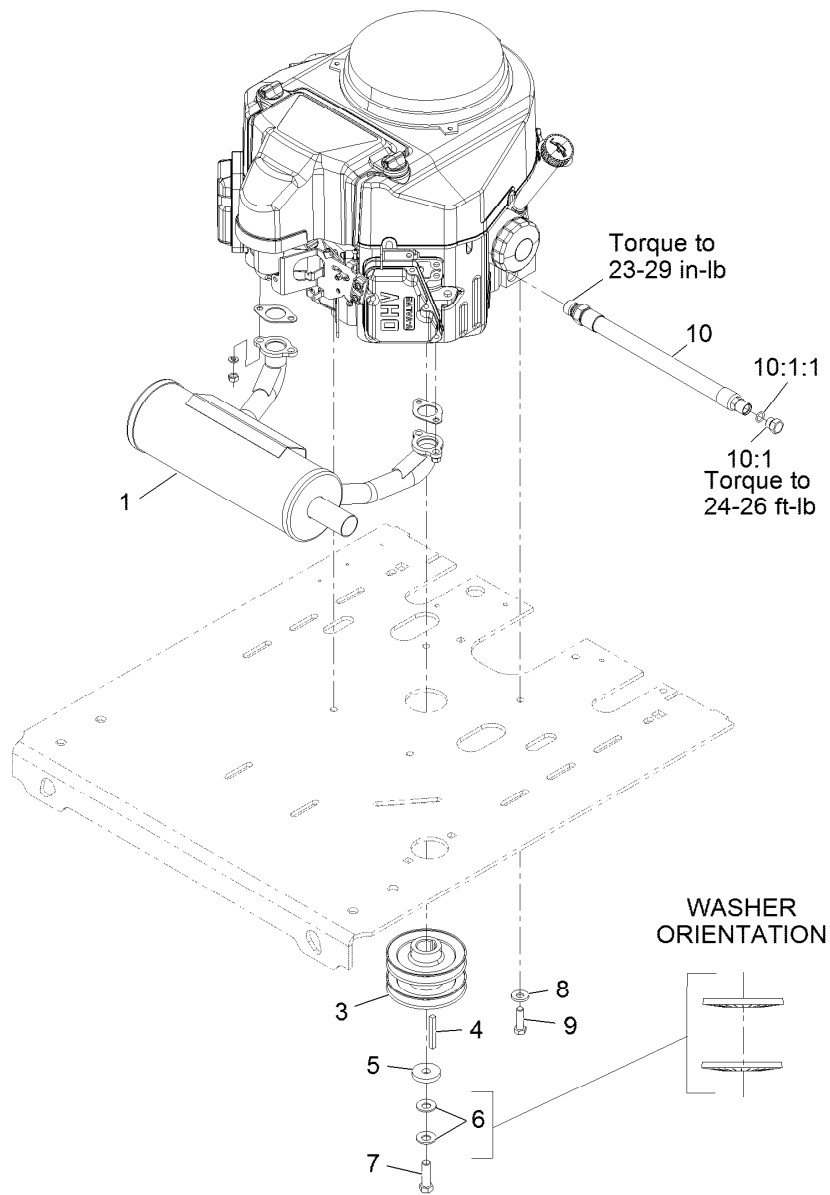
<i>Ref.</i>	<i>Part Number</i>	<i>Qty.</i>	<i>Description</i>
1	116-6728	1	Shaft-Tine, LH
2	116-6731	1	Float Tine Shaft ASM
2:2	94-8949	2	Bushing-Flange
3	126-2143	24	Tine-Coring (3/4)
4	323-8	24	Screw-HH 3/8-16 X 1 1/2
5	3296-39	24	Nut-Nyloc 3/8-16
6	116-7271	1	Collar-Locking ●

● Use Loctite® 243 on threads.



Fuel Assembly

Ref.	Part Number	Qty.	Description	Ref.	Part Number	Qty.	Description
1	116-9541-01	1	Support-Tank, Fuel	12	1-603770	1	Valve-Fuel
2	126-1525	1	ASM, Fuel Tank	13	105-8342	1	Hose-Fuel
2:2	120-5461	1	Cap-Fuel, Ratcheting	17	1-303335	3	Tie-Cable 7 15/16 (Large)
2:3	114-0284	1	Grommet	19	114-0292	1	Bracket-Canister, Carbon
2:4	119-3547	1	Valve-Vent, Fuel	20	117-1221	1	Canister-Carbon, 800Cc
2:5	103-2605	1	Fitting-Fuel Bulkhead W/Strainer	21	115-0962	1	Hose-Vent, Canister
3	107-4543	2	Clamp	22	126-3703	1	Hose-Emissions
5	3256-3	2	Washer-5/16 Std	23	116-3116	1	Hose-Vent, Formed
6	322-10	2	Screw-HH 5/16-18 X 2	24	116-2394	1	Hose-Vent, Formed
7	104-8300	2	Nut-Nyloc 5/16-18 Flg	25	116-2232	1	Valve-Control, Vacuum
8	3231-22	4	Bolt-Carriage 3/8-16 X 1	26	116-2233	1	Hose-Vent, Formed
9	104-8301	4	Nut-Nyloc 3/8-16 Flg	27	126-2991-03	1	Bracket-Mounting, Canister
10	2412-98	4	Clamp-Hose	28	3229-1	2	Bolt-Carriage 1/4-20 X 3/4
11	119-7856	1	Hose-Fuel	29	321-2	2	Screw-HH 1/4-20 X 1/2
				30	104-7201	4	Nut-Nyloc 1/4-20 Flg

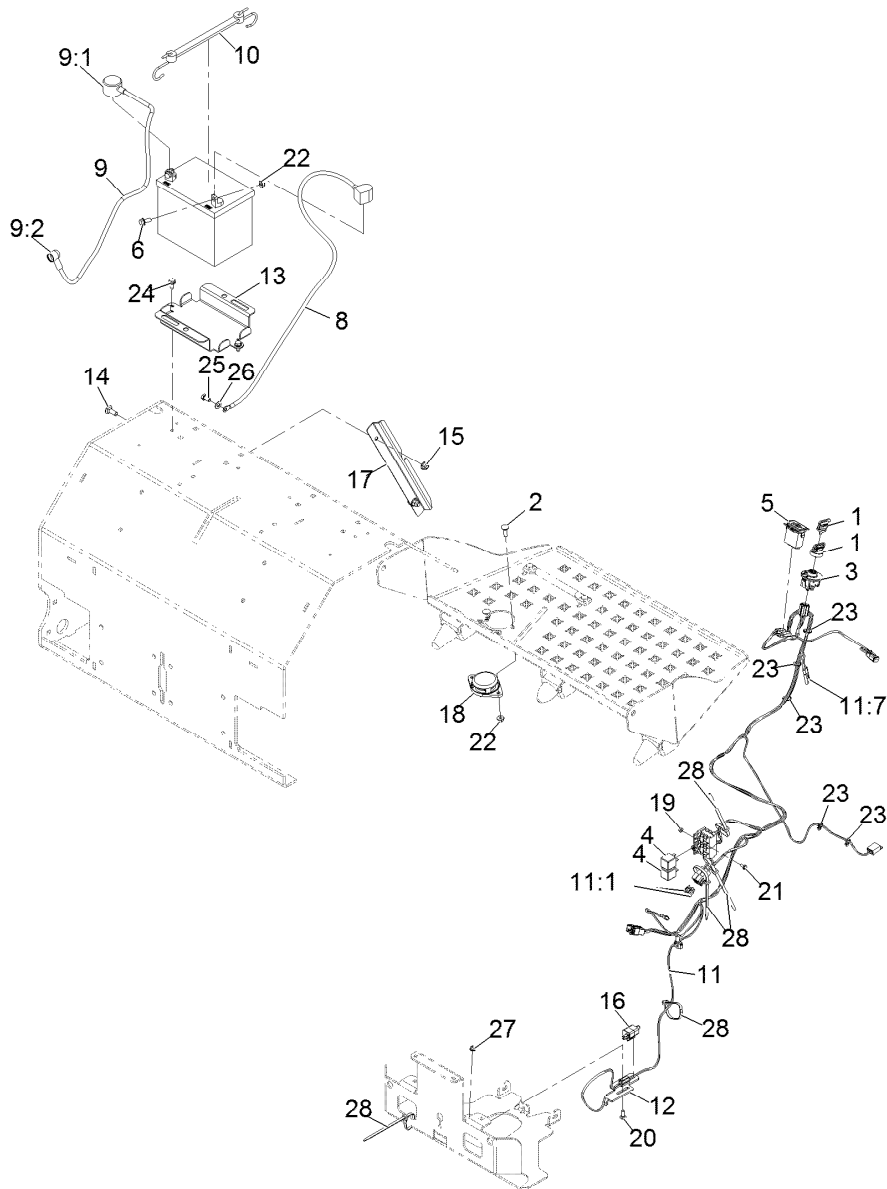


Engine Assembly

Ref.	Part Number	Qty.	Description
1	116-3735	1	Muffler-Horizontal
3	116-9709	1	Pulley
4	103-4177	1	Key
5	1-543610	1	Washer
6	1-603610	2	Washer-Spring Disc 7/16
7	109-9761	1	Screw-HH 7/16-20 X 1 1/2 W/Loctite ■
8	98-5975	4	Washer-Spring Disc 3/8
9	323-7	4	Screw-HH 3/8-16 X 1 1/4
10	116-4924	1	Asm-Hose Oil Drain W/Plug ●
10:1	353-508	1	Plug-W/O-Ring
10:1:1	237-42	1	O-Ring

● Use a Teflon Pipe Sealant or equivalent on threads.

■ Use Pro-Lock, Nut Type (P/N 1-840022, .5ml tube) on threads.



Electrical Assembly

Ref.	Part Number	Qty.	Description	Ref.	Part Number	Qty.	Description
1	1-603511	1	Key-Ignition	14	3231-2	2	Bolt-Carriage 3/8-16 X 1
1	103-2106	1	Key-Exmark Logo	15	104-8301	2	Nut-Nyloc 3/8-16 Flg
2	3230-2	2	Bolt-Carriage 5/16-18 X 1	16	110-6765	1	Switch
3	117-2221	1	Switch-Ignition	17	116-9394-03	1	Guard-Harness
4	1-643275	2	Relay-12Vdc 40 Amp	18	92-6282	1	Switch-Seat
5	1-513374	1	Meter-Engine Hours	19	3296-2	2	Nut-Nyloc #10-24
6	3234-5	2	Screw-HH Flg 5/16-18 X 3/4	20	3229-1	1	Bolt-Carriage 1/4-20 X 3/4
8	117-6422	1	Cable-Battery, Black	21	3290-321	2	Screw-HWH
9	109-7630	1	Positive Battery Cable ASM	22	104-8300	4	Nut-Nyloc 5/16-18 Flg
9:1	109-2407	1	Insulator-Battery	23	1-303287	5	Tie-Cable 5 1/2 (Small)
9:2	1-543393	1	Insulator-Solenoid	24	32144-70	2	Screw-HWH 5/16-18 X 3/4 Tf
10	104-2466	1	Holddown-Battery	25	33114-016	1	Screw-HH M8-1.25 X 16Mm
11	116-9382	1	Harness ASM ●	26	33094-00	1	Washer
11:1	1-816001	2	Fuse-Blade Type, 20 Amp	27	104-7201	1	Nut-Nyloc 1/4-20 Flg
11:7	116-0053	1	Cap-Plug	28	1-303335	5	Tie-Cable 7 15/16 (Large)
12	116-7589	1	Mount-Switch				
13	116-9383-03	1	Bracket-Battery				

● Use dielectric grease on all unsealed connectors and terminals only. Do not apply in sealed connectors.

EXMARK® MAINTENANCE

MAXIMIZE THE PERFORMANCE OF YOUR EXMARK.

4-CYCLE PREMIUM ENGINE OIL

Part No. 116-3373

Both SAE 30 and SAE 10W-30 in one bottle.

Contains increased levels of zinc and phosphorus for better lubricity.

No Viscosity Index Improvers that tend to shear down in high heat.

Synthetic formulation.

Gas & Diesel compatible.

Anti-corrosion additives.

API 'SL' and JASO rated with wet clutch compatibility for other machines.

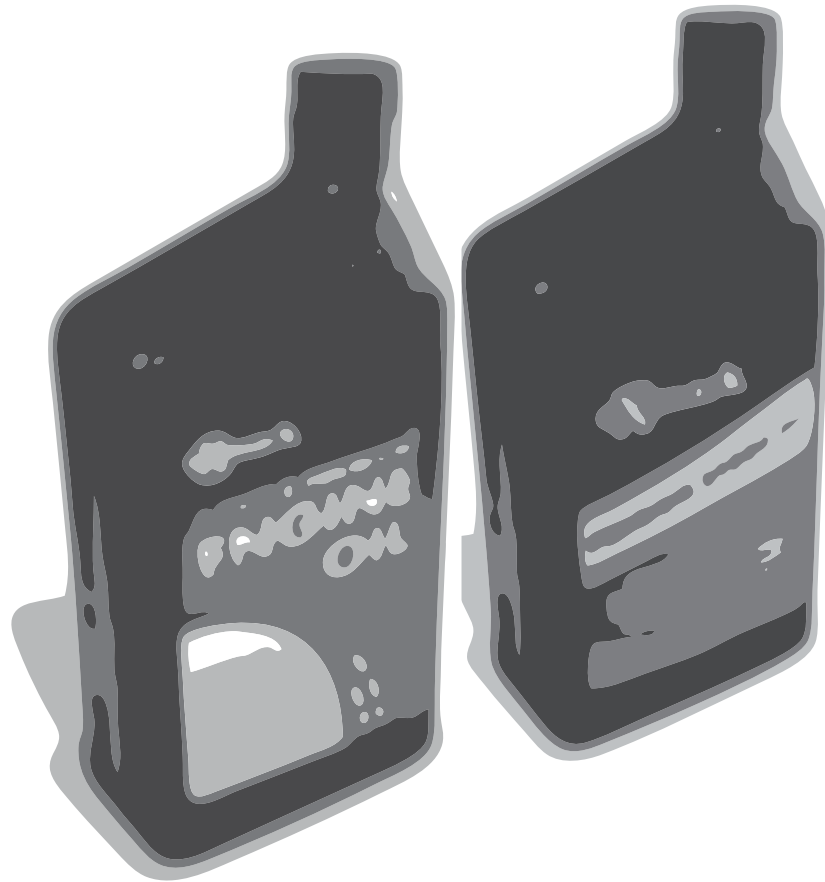
PREMIUM HYDRO OIL

Part No. 109-9828

Commercial quality for tough, high-heat conditions.

Designed specifically for zero-turn mower hydraulic systems.

Superior shear resistance under heavy loads.



Available from your local Exmark dealer. Find your closest dealer at exmark.com

EXMARK ACCESSORIES AND OPTIONS*

MID-MOUNT RIDING ACCESSORIES AND OPTIONS

CUSTOM RIDE SEAT SUSPENSION SYSTEM	OPERATOR CONTROLLED DISCHARGE
FULL SUSPENSION SEAT	SUN SHADE
DECK LIFT ASSIST KIT	TRASH CONTAINER
HITCH KIT	TURF STRIPER
LIGHT KIT	ULTRA VAC COLLECTION SYSTEM
12V POWER PORT	ULTRA VAC QUICK DISPOSAL SYSTEM
MICRO-MULCH SYSTEM	

OUT-FRONT RIDING ACCESSORIES AND OPTIONS

CUSTOM RIDE SEAT SUSPENSION SYSTEM	SNOW BLADE
DUAL-TAIL WHEEL	SNOWBLOWER
FLOOR PAN EXTENDER	SUN SHADE
HITCH KIT	TRASH CONTAINER
LIGHT KIT	ULTRA VAC COLLECTION SYSTEM
MICRO-MULCH SYSTEM	ULTRA VAC QUICK DISPOSAL SYSTEM
ROLL OVER PROTECTION SYSTEM (ROPS)	WEATHER CAB

WALK-BEHIND ACCESSORIES AND OPTIONS

GRASS CATCHER	TURF STRIPER
MICRO-MULCH SYSTEM	STANDON

*Some accessories and options not available for some models.

Place Model No. and Serial No.
Label Here (Included in the Literature
Pack) or Fill in Below

Model No. _____

Serial No. _____

Date Purchased _____

Engine Model No. and Spec. No. _____

Engine Serial No. (E/No) _____

© 2014 Exmark Mfg. Co., Inc.
Industrial Park Box 808
Beatrice, NE 68310
All Rights Reserved

Part No. 4501-991 Rev. A
(402) 223-6300
Fax (402) 223-5489
Printed in the USA.

