

35

IMPORTANT

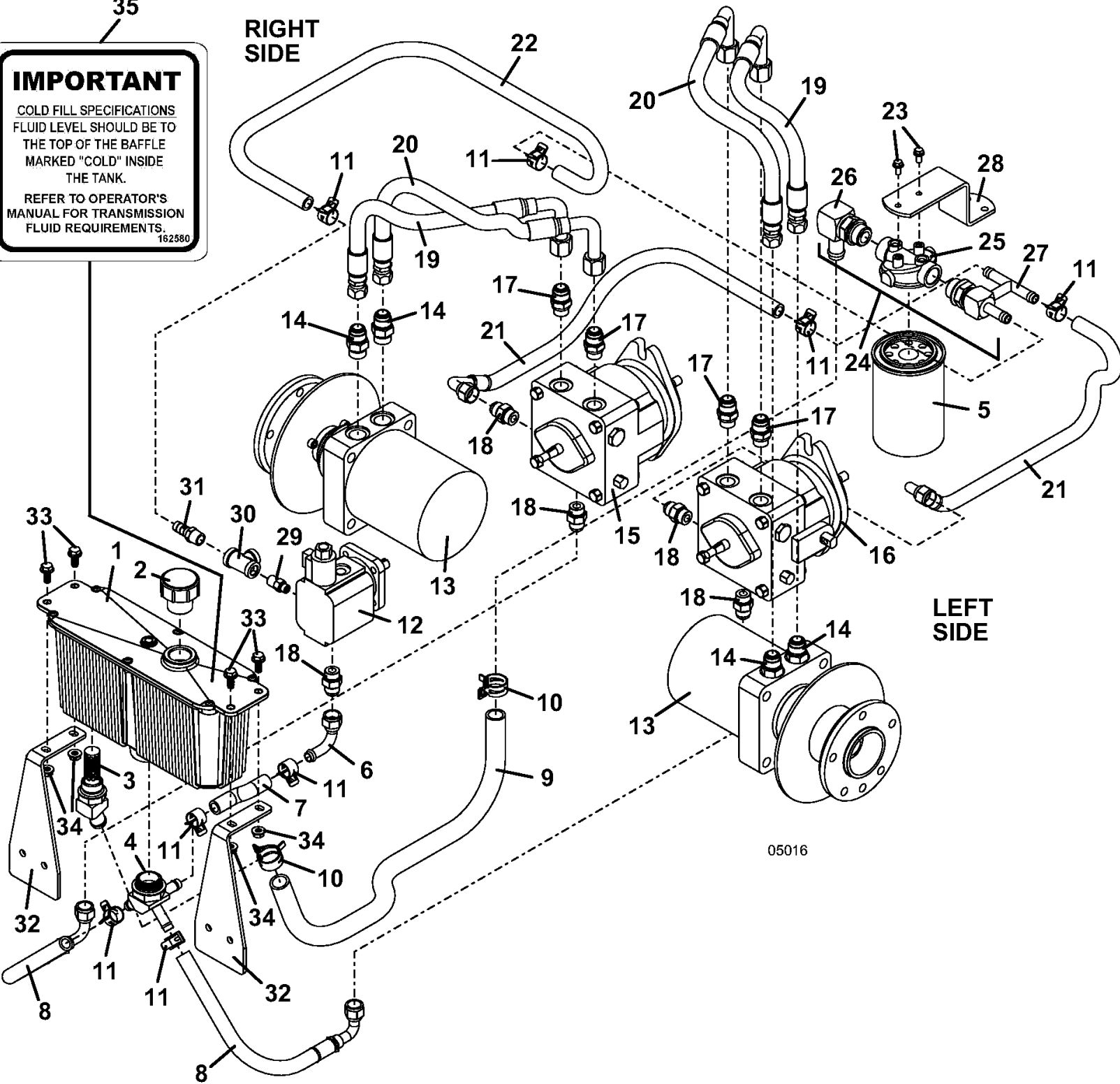
COLD FILL SPECIFICATIONS
FLUID LEVEL SHOULD BE TO
THE TOP OF THE BAFFLE
MARKED "COLD" INSIDE
THE TANK.

REFER TO OPERATOR'S
MANUAL FOR TRANSMISSION
FLUID REQUIREMENTS.

162580

RIGHT
SIDE

LEFT
SIDE



05016