

## REMOVAL, INSPECTION AND ASSEMBLY OF INPUT SHAFT BDP-10A

### Disassembly

- 1) Remove the retaining ring (22).
- 2) Remove the lip seal (20).
- 3) Remove the spacer (21).
- 4) Remove the shaft assembly (18) from the pump.

### Inspection

- 1) Inspect the input shaft (18) for worn splines, surface damage or keyway damage. Replace shaft assembly if necessary.
- 2) Inspect the bearing (19) for evidence of scoring, corrosion or damage. Replace shaft assembly if necessary.
- 3) Inspect and replace the spacer (21) if it is bent or broken.
- 4) Inspect and replace the retaining ring (22) if it is bent or broken.

**NOTE: Replace the input shaft seal (20) after removal.**

**NOTE: If trunnion arm is to be removed, delay reassembly of input shaft assembly.**

### Assembly

**NOTE: Upon removal, it is recommended that all seals, O-rings and gaskets be replaced. During installation, lightly lubricate all seals, O-rings and gaskets with clean petroleum jelly prior to assembly. Also, protect the inner diameter of seals by covering the shaft with plastic wrap.**

- 1) Install input shaft assembly (18) into the housing (1) bore. Light tapping with a rubber mallet may be necessary on the input shaft (18) once the bearing is aligned with the housing (1) bore. Rotate the input shaft (18) to insure free movement.
- 2) Install spacer (21).
- 3) Install new lip seal (20).
- 4) Install retaining ring (22). **Figure 14**

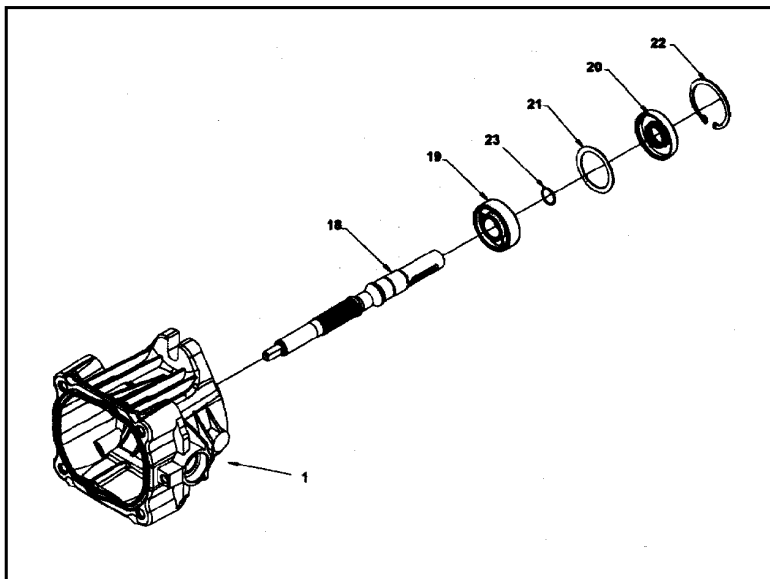


Figure 14