

REMOVAL, INSPECTION AND ASSEMBLY OF INPUT SHAFT BDP-16A/21L

Disassembly

- 1) Remove the retaining ring (3).
- 2) Remove the lip seal (6).
- 3) Remove the spacer (4).
- 4) Remove the shaft assembly (1) from the pump.

Inspection

- 1) Inspect the input shaft (1) for worn splines, damage or keyway damage. Replace shaft assembly if necessary.
- 2) Inspect the bearing (5) for evidence of scoring, corrosion or damage. Replace shaft assembly if necessary.
- 3) Inspect and replace the spacer (4) if it is bent or broken.
- 4) Inspect and replace the retaining ring (3) if it is bent or broken.

NOTE: Replace the input shaft seal (6) after removal.

NOTE: If trunnion arm is to be removed, delay reassembly of input shaft assembly.

- 5) Inspect and replace the thrust spring (20) and thrust washer (19) if they are distorted or broken.

Assembly

NOTE: Upon removal, it is recommended that all seals, O-rings and gaskets be replaced. During installation, lightly lubricate all seals, O-rings and gaskets with clean petroleum jelly prior to assembly. Also, protect the inner diameter of seals by covering the shaft with plastic wrap.

- 1) Install shaft assembly (1) into the housing (15) bore. Light tapping with a rubber mallet may be necessary on the input shaft (1) once the bearing is aligned with the housing (15) bore. Rotate the input shaft (1) to insure free movement.
- 2) Install spacer (4).
- 3) Install the lip seal (6).
- 4) Install the retaining ring (3). **Figure 15**

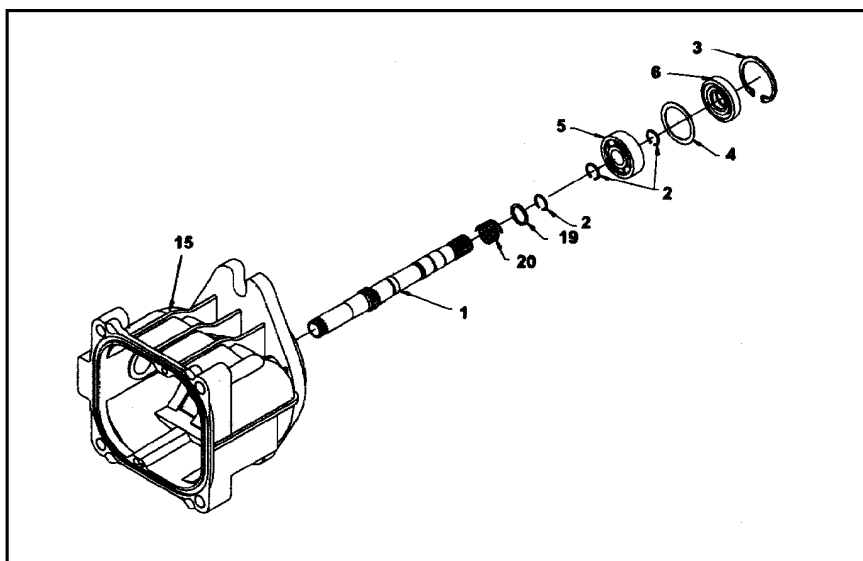


Figure 15