

**WOODS®**

# BRUSHBULL™ ROTARY CUTTER

**BB48X**

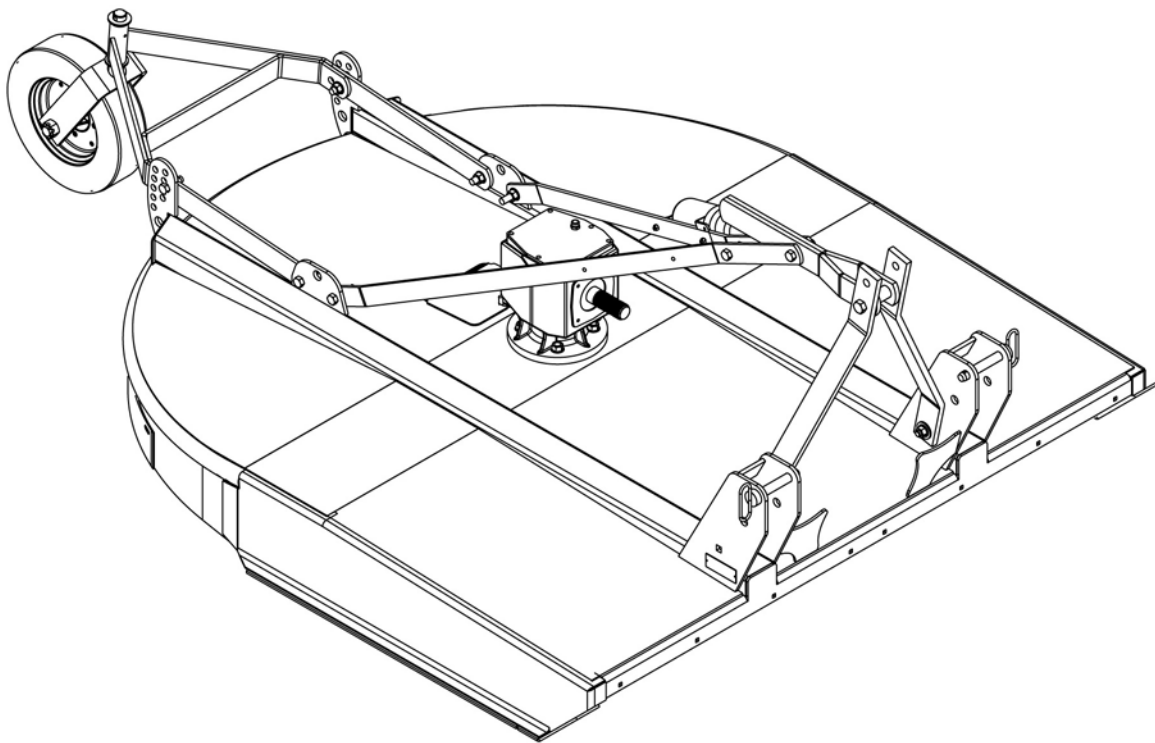
**BB60X**

**BB72X**

**BB84X**

Serial Number 1159929 & After

Includes Service and Parts Information for Serial Number 1159928 & Prior



**MAN0632**

(Rev. 5/21/2018)

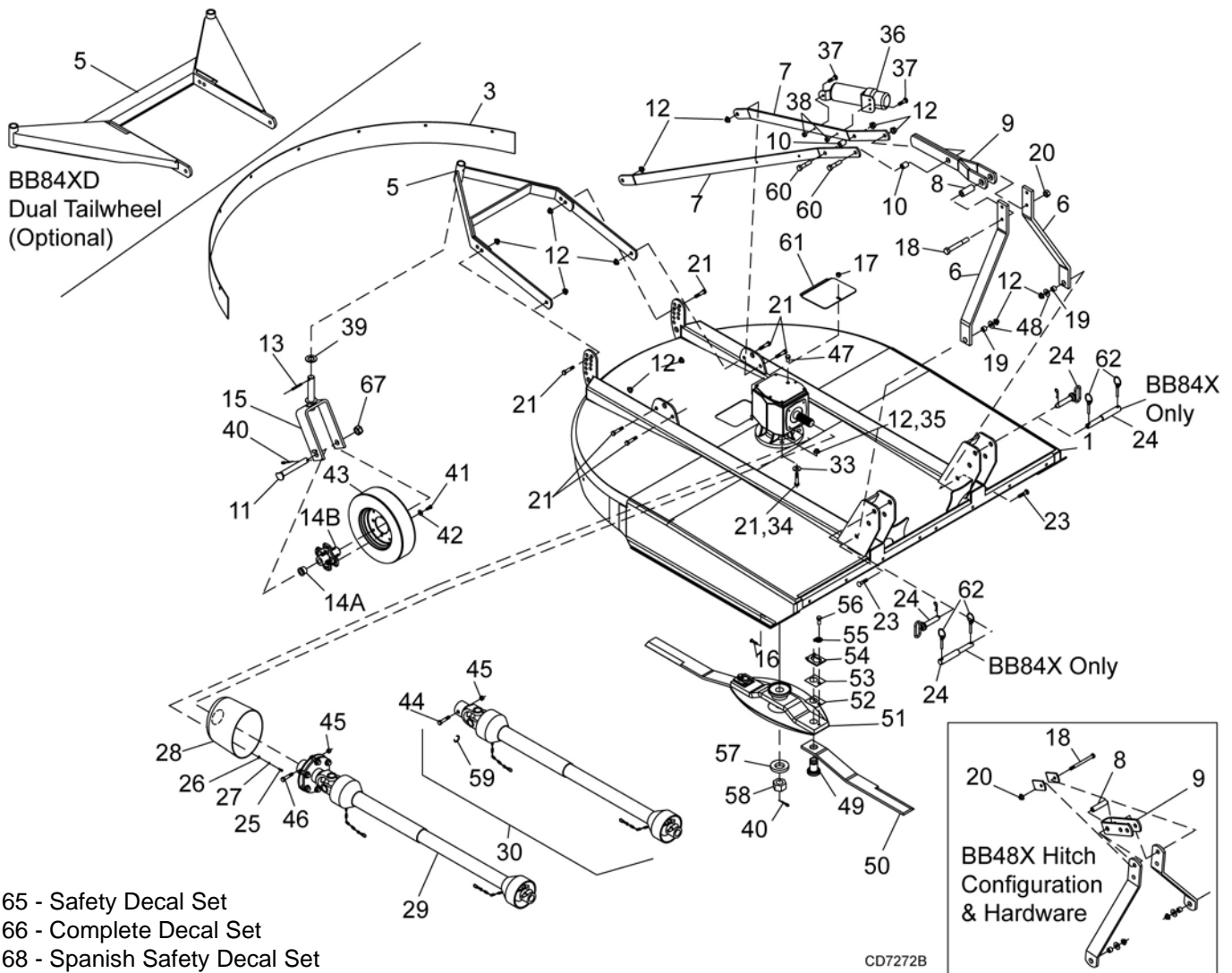
**WOODS®**  
Woods Equipment Company

OPERATOR'S MANUAL

### **BRUSHBULL™ Rotary Cutters: BB48X, BB60X, BB72X, BB84X**

BRUSHBULL™ STANDARD-DUTY MAIN ASSEMBLY .....	44-45
GEARBOX ASSEMBLY (FLAT-TOP) .....	46-47
CHECK CHAIN ASSEMBLY (OPTIONAL) .....	47
GEARBOX ASSEMBLY (CAST/CROWN TOP) .....	48
DRIVELINES:	
BB48X STANDARD DRIVELINE .....	49
BB48X COMER STANDARD DRIVELINE .....	50
BB60X STANDARD DRIVELINE .....	51
BB60X COMER STANDARD DRIVELINE .....	52
BB48X & BB60X SLIP CLUTCH DRIVELINE ASSEMBLY (OPTIONAL) .....	53
BB48X & BB60X COMER SLIP CLUTCH DRIVELINE (OPTIONAL) .....	54
BB72X SLIP CLUTCH DRIVELINE ASSEMBLY .....	55
BB72X COMER SLIP CLUTCH DRIVELINE .....	56
BB84X SLIP CLUTCH DRIVELINE ASSEMBLY .....	57
BB84X COMER SLIP CLUTCH DRIVELINE .....	58
BB84X WALTERSCHEID SLIP CLUTCH DRIVELINE .....	59
FRONT RUBBER SHIELDING (STANDARD) .....	60
FRONT & REAR CHAIN SHIELDING (OPTIONAL) .....	60

## BRUSHBULL STANDARD-DUTY MAIN ASSEMBLY BB48X, BB60X, BB72X & BB84X (BB84X SHOWN)



- 65 - Safety Decal Set
- 66 - Complete Decal Set
- 68 - Spanish Safety Decal Set

REF	PART	QTY	DESCRIPTION	REF	PART	QTY	DESCRIPTION
3	57236RP	1	Rear band - <b>BB48X</b>	7	57239RP	2	Diagonal brace <b>BB48X</b>
3	57210RP	1	Rear band - <b>BB60X</b>	7	1023060RP	2	Diagonal brace <b>BB60X</b>
3	57183RP	1	Rear band - <b>BB72X</b>	7	1021559RP	2	Diagonal brace <b>BB72X</b>
3	57184RP	1	Rear band - <b>BB84X</b>	7	1023044RP	2	Diagonal brace <b>BB84X</b>
5	57162RP	1	Tailwheel assembly	8	64814	1	Spacer 1/2 x 2-3/4 <b>BB48X</b>
5	1030529RP	1	Dual tailwheel assembly ( <b>BB84XD</b> ) (optional)	8	27140RP	1	Sleeve, 3/4 x 1-1/4 x 3 <b>BB60X, BB72X, BB84X</b>
6	1021569RP	2	A-Frame bar <b>BB48X</b>	9	15321	1	Link, bent .38 x 2.5 x 9.13 <b>BB48X</b>
6	1023059RP	2	A-Frame bar <b>BB60X</b>	9	1021560RP	2	Top link <b>BB60X, BB72X, BB84X</b>
6	1021556RP	2	A-Frame bar <b>BB72X</b>	10	66661RP	2	Sleeve, .626 x 1.00 x 1.26 <b>BB60X, BB72X, BB84X</b>
6	1024123RP	2	A-Frame bar <b>BB84X</b>	11	1030523	1	M24 x 2 Axle bolt

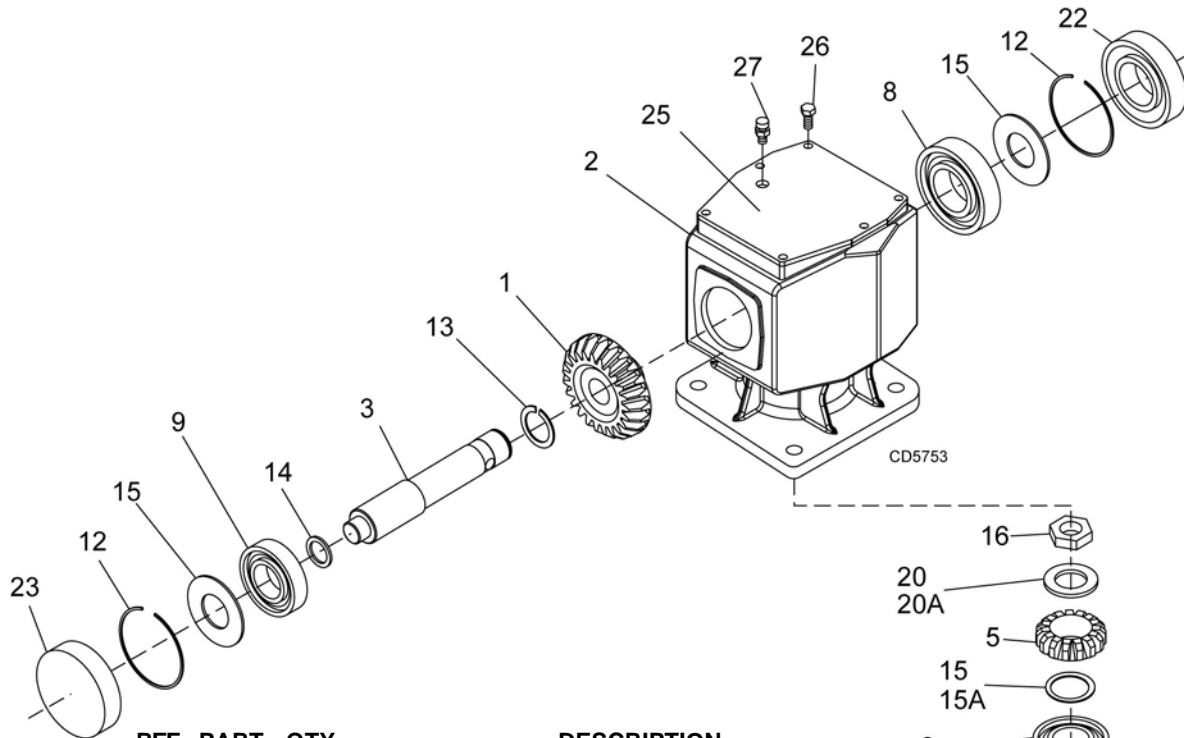
**44 Parts**

(Rev. 9/4/2013)  
MAN0632 (5/15/2007)

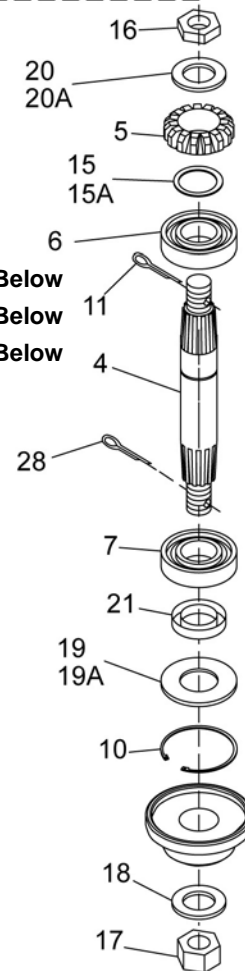
## BB48X, BB60X, BB72X & BB84X MAIN ASSEMBLY PARTS LIST

REF	PART	QTY	DESCRIPTION	REF	PART	QTY	DESCRIPTION
12	19025RP	14	5/8 NC Flange lock nut	42	*	4	1/2 Flat washer
13	40775	1	Spirol pin 10 mm x 65 mm	43	4676	1	4 x 15 Notat tire & rim
14A	1030524RP	2	Bushing, flanged .984 x 1.378 x .98	44	15349	1	1/2 NC x 3 Shear bolt GR2 -or-
14A	1013880	2	Bushing, flanged .984 x 1.378 x .984	44	1024632	1	1/2 NC x 3 HHCS GR8 (Slip clutch only)
14A	1032573	2	Bushing, flanged .990 x 1.394 x .98	45	765 *	2	1/2 NC Lock nut
14B	1030522	1	Hub, 4 bolt 4 x 8	46	1001315	1	Bolt & nut, M12 x 1.25 x 65 - <b>BB72X</b> Clutch
15	1036880RP	1	Tailwheel clevis	47	57076	1	Vent plug, (See Gearbox, page 46) <b>BB48X, BB48X, BB60X, BB72X</b> <b>S/N 1159928 and Before (Flat Top</b> <b>Gearbox)</b>
16	6697RP *	8	3/8 NC x 1 Carriage bolt GR5	47	1011780RP	1	Vent plug, (See Gearbox, page 48) <b>BB48X, BB60X, BB72X</b> <b>S/N 1159929 and After (Cast/Crown</b> <b>Top Gearbox)</b>
17	14350RP	9	3/8 NC Flange lock nut	48	692RP *	2	5/8 Flat washer
18	23479RP *	1	1/2 NC x 5 Cap screw GR5 <b>BB48X</b>	49	15803RP	2	Blade pin - <b>BB48X &amp; BB60X</b> <b>(60X w/ SN before 1276527)</b>
18	29315	1	3/4 NC x 5-1/2 Cap screw GR5 <b>BB60X,</b> <b>BB72X, BB84X</b>	49	1009199RP	2	Blade pin - <b>BB72X , BB84X, BB60X</b> <b>(BB60 w/ SN after 1276577)</b>
19	1791RP	2	Sleeve, 5/8 x 1 x 9/16 HT <b>BB48X &amp; BB60X</b>	50	30310KTRP	1	Blade 3/8 x 3 x 16 CCW - <b>BB48X</b>
19	67222RP	2	Sleeve, 5/8 x 1 x 43/64 HT <b>BB72X &amp; BB84X</b>	50	15326KT	1	Blade 3/8 x 3 x 20.50 CCW - <b>BB60X</b> <b>(w/ SN before 1276577)</b>
20	11900RP N S	2	1/2 NC Flange lock nut <b>(BB48X Quick Hitch)</b>	50	1037892KTRP	1	Blade 1/2 x 3 x 20.50 CCW - <b>BB60X</b> <b>(w/ SN after 1276577)</b>
20	2371RP	1	3/4 NC Lock nut ZP <b>(BB60X, BB72X,</b> <b>BB84X)</b>	50	57189KTRP	1	Blade 1/2 x 3 x 26.5 CCW <b>BB72X &amp; BB84X</b>
21	902RP *	10	5/8 x 2 Cap screw GR5	51	1021562		Crossbar asy <b>BB48X, BB60X, BB72X -</b> <b>S/N 1159928 and Before (Flat Top</b> <b>Gearbox)</b>
21	941RP *	4	5/8 NC x 2-1/2 HHCS GR5 <b>(4 for BB84XD)</b>	51	1032590RP		Crossbar asy <b>BB48X, BB60X, BB72X -</b> <b>S/N 1159929 and After (if equipped</b> <b>with Cast/Crown Top Gearbox)</b>
22	10380 * N S	1	1/2 NC x 4 Cap screw GR5 <b>(BB48X Quick Hitch)</b>	51	1021571RP	1	Crossbar asy <b>BB84X</b>
23	2855RP *	2	5/8 x 2 Carriage bolt GR5	52	13946RP	2	20 GA 1-1/2 Blade shim
24	1023033RP	2	Hitch pin .875 x 5.02 <b>BB48X, BB60X, BB72X</b>	53	10520RP	2	18 GA 1-1/2 Blade shim
24	1026542RP	2	Step pin, Cat. 1 or 2 <b>BB84X</b>	54	32603RP	2	Keyhole plate
25	24801RP	4	M8 x 1.25P x 20 mm Cap screw	55	32604RP	2	Blade pin lock clip, special
26	35155RP *	4	5/16 Flat washer	56	6100RP *	2	1/2 NC x 1-1/4 GR5 Cap screw
27	2472RP *	4	5/16 Lock washer	57	20893	1	Washer, 25 x 44 x 4 mm <b>(BB48X, BB60X, BB72X)</b>
28	1002048RP	1	Clutch shield, 100 x 143 mm BC	57	39322	1	Washer, 31 x 56 x 4 mm <b>BB84X</b>
29	601750	1	Complete slip clutch drive asy - <b>BB72X</b> (page 55) -or-	58	20892RP	1	Castle nut metric, M24 x 2 <b>BB48X, BB60X, BB84X</b>
29	601751	1	Complete slip clutch drive asy - <b>BB84X</b> (page 57)	58	39323	1	Castle nut metric, M30 x 2 <b>BB84X</b>
30	601737	1	Complete shear pin drive asy - <b>BB48X</b> (page 48) -or-	59	15345	1	Retaining ring, .05 x 1.38
30	601738	1	Complete shear pin drive asy - <b>BB60X</b> (page 51) -or-	60	986RP *	2	5/8 NC x 2-3/4 Cap Screw GR5 - <b>BB60X, BB72X, BB84X</b>
30	601749	1	<b>BB48X &amp; BB60X</b> Optional slip clutch drive (page 53)	61	57050RP	1	Bent link, .14 x 9.0 x 7.84
32	33657 N S	1	Sleeve, 1/2 x 3/4 x 2-13/16 <b>(BB48X Quick Hitch)</b>	62	27542RP	4	7/16 x 11/32 Klik pin HT
33	57817RP	4	5/8 Flat washer, hardened <b>BB48X, BB60X, BB72X</b>	65	15358	1	Safety decal set
33	57798RP	4	3/4 Flat washer, hardened <b>BB84X</b>	66	1000624	1	Complete decal set
34	30068RP	4	3/4 NC x 2-1/2 Cap screw GR5 <b>BB84X</b>	67	1032105	1	Nut slotted M24x2.0P
35	302207	4	3/4 NC Flange lock nut	68	1036794	1	Spanish safety decal set
36	1003828RP	1	Manual tube				
37	24409RP *	2	5/16 NC x 1 Carriage bolt				
38	4529RP *	2	5/16 NC Hex nut				
39	7163RP *	1	Washer, 1-1/4 STD Flat			*	Standard hardware; obtain locally
40	*	2	Cotter Pin			NS	Not Shown
41	300300	4	1/2 NC x 1 HHCS GR5				

# GEARBOX ASSEMBLY - (FLAT TOP)



REF	PART	QTY	DESCRIPTION
A	58800	1	Gearbox repair asy ( <b>BB48X</b> ) - S/N 1159928 and Below
A	58801	1	Gearbox repair asy ( <b>BB60X</b> ) - S/N 1159928 and Below
A	58802	1	Gearbox repair asy ( <b>BB72X</b> ) - S/N 1159928 and Below
A	58803	1	Gearbox repair asy ( <b>BB84X</b> )
1	57458	1	Gear, crown 25T ( <b>BB48X</b> )
1	57459	1	Gear, crown 24T ( <b>BB60X</b> )
1	57460	1	Gear, crown 22T ( <b>BB72X</b> )
1	39424	1	Gear, crown 19T ( <b>BB84X</b> )
2	NSS	1	Gearbox housing
3	57464	1	Input shaft 1-3/8 smooth shaft ( <b>BB48X &amp; BB60X</b> )
3	57465	1	Input shaft 1-3/8 - 6 spline ( <b>BB72X</b> )
3	57147	1	Input shaft 1-3/8 - 6 spline ( <b>BB84X</b> )
4	57489	1	Output shaft ( <b>BB48X &amp; BB60X</b> )
4	57490	1	Output shaft ( <b>BB72X</b> )
4	57191	1	Output shaft ( <b>BB84X</b> )
5	57491	1	Gear, pinion 13T M5.3 ( <b>BB48X</b> )
5	57497	1	Gear, pinion 14T M5.3 ( <b>BB60X</b> )
5	57498	1	Gear, pinion 15T M5.7 ( <b>BB72X</b> )
5	39418	1	Gear, pinion 15T M6.5 ( <b>BB84X</b> )
6	57476	1	Bearing cup & cone ( <b>BB48X &amp; BB60X</b> )
6	39257	1	Bearing cup & cone ( <b>BB72X</b> )
6	39263	1	Bearing cup & cone ( <b>BB84X</b> )
7	57478	1	Bearing cup & cone ( <b>BB48X, BB60X, BB72X</b> )
7	39263	1	Bearing cup & cone ( <b>BB84X</b> )
8	57462	1	Bearing cup & cone



(Continued on next page)

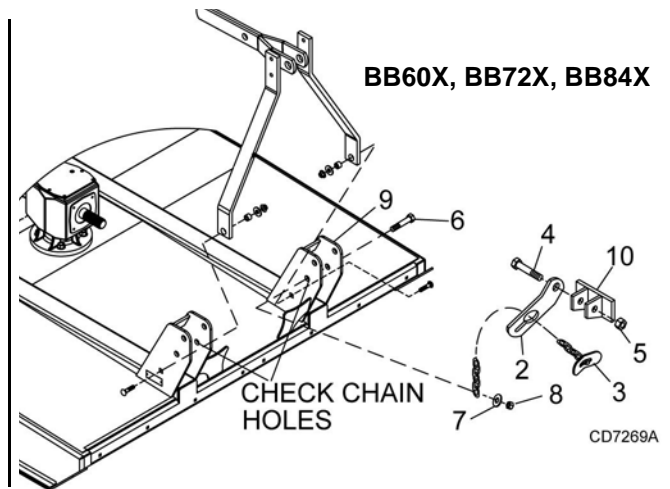
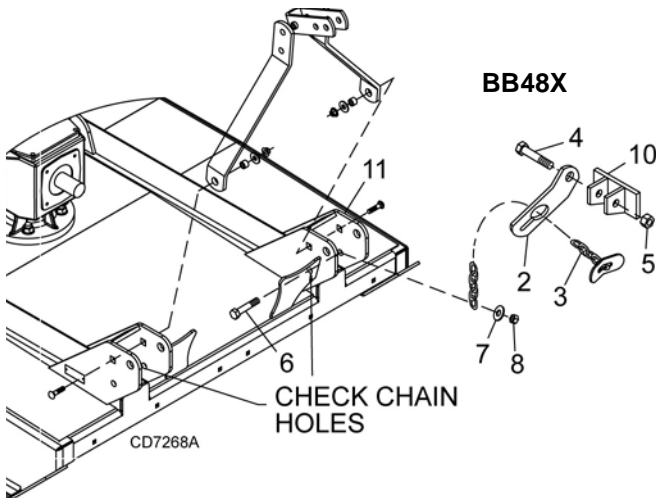
**46 Parts**

(Rev. 5/11/2010)  
MAN0632 (5/15/2007)

## GEARBOX ASSEMBLY PARTS LIST (Continued)

REF	PART	QTY	DESCRIPTION	REF	PART	QTY	DESCRIPTION
9	20890	1	Bearing-Ball	20A	57094	1	Shim kit 44 x 30.3 x 1 ( <b>BB84X</b> )
10	20897	1	Ring retainer 81mm internal ( <b>BB48X, BB60X, BB72X</b> )	20	57473	1	Flat washer 21 x 37 x 3 ( <b>BB48X &amp; BB60X</b> )
11	*	1	Cotter pin	20	57474	1	Flat washer 25 x 48 x 2.5 ( <b>BB72X</b> )
12	57466	2	Snap ring	21	20900	1	Seal, metric 40 x 80 x 12 ( <b>BB48X, BB60X, BB72X</b> )
13	20895	1	Snap ring ( <b>BB48X, BB60X, BB72X</b> )	21	39289RP	1	Seal, 50 x 90 x 10 ( <b>BB84X</b> )
14	57373	1	Spacer 35.3 x 48 x 2.5 ( <b>BB48X, BB60X, BB72X</b> )	22	57463	1	Oil seal 35 x 72 x 10
15	57328	2	Gearbox shim kit	23	57374	1	Oil cap
15A	57471	1	Shim kit 50.3 x 70.3 ( <b>BB84X</b> )	25	57375	1	Top cover ( <b>BB48X &amp; 60X</b> )
16	57468	1	Castle nut ( <b>BB48X &amp; BB60X</b> )	25	57376	1	Top cover ( <b>BB72X</b> )
16	57469	1	Castle nut ( <b>BB72X</b> )	25	57139	1	Top cover ( <b>BB84X</b> )
16	39261	1	Castle nut ( <b>BB84X</b> )	26	*	6	M8 x 16 Hex head cap screw CL8.8 ( <b>BB48X, BB60X, BB72X</b> )
17	20892RP	1	Castle nut metric M24 x 2 ( <b>BB48X, BB60X, BB72X</b> )	26	*	6	M8 x 14 Hex head cap screw CL8.8 ( <b>BB84X</b> )
17	39323	1	Castle nut metric M30 x 2 ( <b>BB84X</b> )	27	57076	1	Vent plug 1/2 NPT
18	20893	1	Washer 25 x 44 x 4 mm ( <b>BB48X, BB60X, BB72X</b> )	28	*	1	Cotter pin
18	39322	1	Washer 31 x 56 x 4 mm ( <b>BB84X</b> )				NS Not Serviced Separately
19	20888	1	Protective washer ( <b>BB48X, BB60X, BB72X</b> )				S
19A	57338	1	Screen protection ( <b>BB84X</b> )				* Standard hardware, obtain locally

### CHECK CHAIN ASSEMBLY (OPTIONAL)

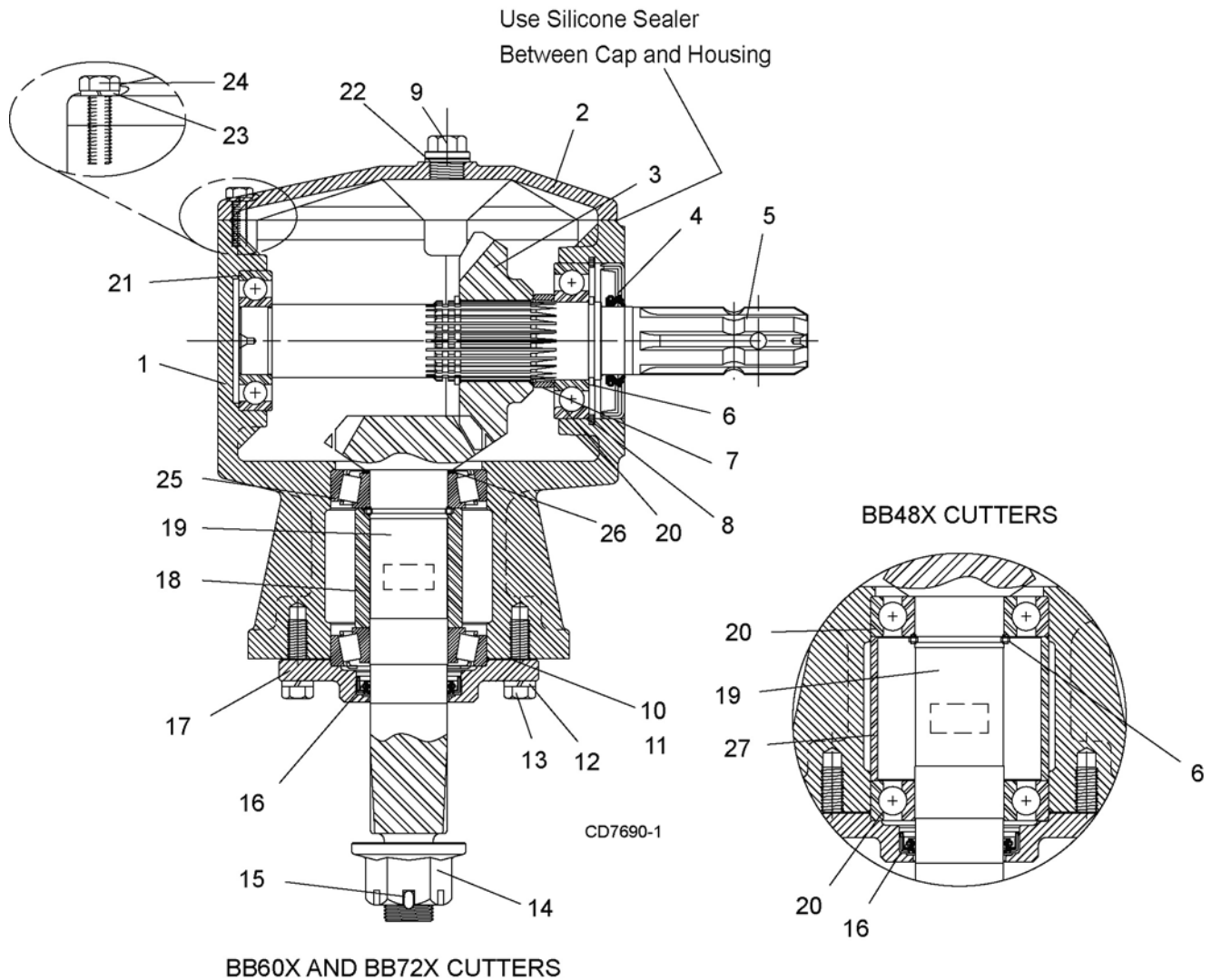


REF	PART	QTY	DESCRIPTION
A	10521	1	Check chain complete
2	7906RP	2	Check chain bracket, lower
3	18048	2	3/8 Chain, 32-Link and check lug
4	2377RP	*	3/4 NC x 6 Hex head cap screw GR5
5	2371RP	*	3/4 NC Hex lock nut
6	12274	*	5/8 NC x 2-1/4 Hex head cap screw GR5

REF	PART	QTY	DESCRIPTION
7	3632	*	5/8 Standard flat washer
8	6239RP	*	5/8 NC Hex nut
9	-----		Mast plate <b>BB60X, BB72X, BB84X</b>
10	-----		Tractor top link bracket
11	-----		Mast plate <b>BB48X</b>

\* Standard hardware, obtain locally

## GEARBOX ASSEMBLY (CAST/CROWN TOP)



REF	PART	QTY	DESCRIPTION	REF	PART	QTY	DESCRIPTION
A	1032587	1	Gearbox repair assembly (BB48X [ball bearing] S/N 1159929 & above)	12	----	4	Lock washer
A	1032588RP	1	Gearbox repair assembly (BB60X [tapered bearing] S/N 1159929 & above)	13	----	4	M10 x 1.5 x 25 cap screw
A	1032585RP	1	Gearbox repair assembly (BB72X [tapered bearing] S/N 1159929 & above)	14	1018331	1	1" - 14 Slotted flange nut
1	----	1	Housing	15	----	1	Cotter pin
2	1019632	1	Inspection cover	16	1018328RP	1	Output seal
3	----	1	22 Tooth gear	17	1038357	1	Output cap
4	1018327RP	1	Input seal	18	----	1	Output bearing spacer
5	----	1	Input shaft	19	----	1	Output shaft and pinion
6	----	1	Retaining ring	20	1018326RP	3	Ball bearing
7	----	1	Gear spacer	21	1018325RP	1	Ball bearing
8	----	1	Retaining ring	22	----	2	Sealing washer w/ plug
9	1011780RP	1	Vent plug and washer	23	----	6	Lock washer
10	1018329	A/R	Output gasket (0.30)	24	----	6	M8 x 1.5 x 25 cap screw
11	1018330	A/R	Output gasket (0.13)	25	57478	2	Bearing cup and cone
				26	1032963	1	Shim kit
				27	----	1	Output bearing spacer

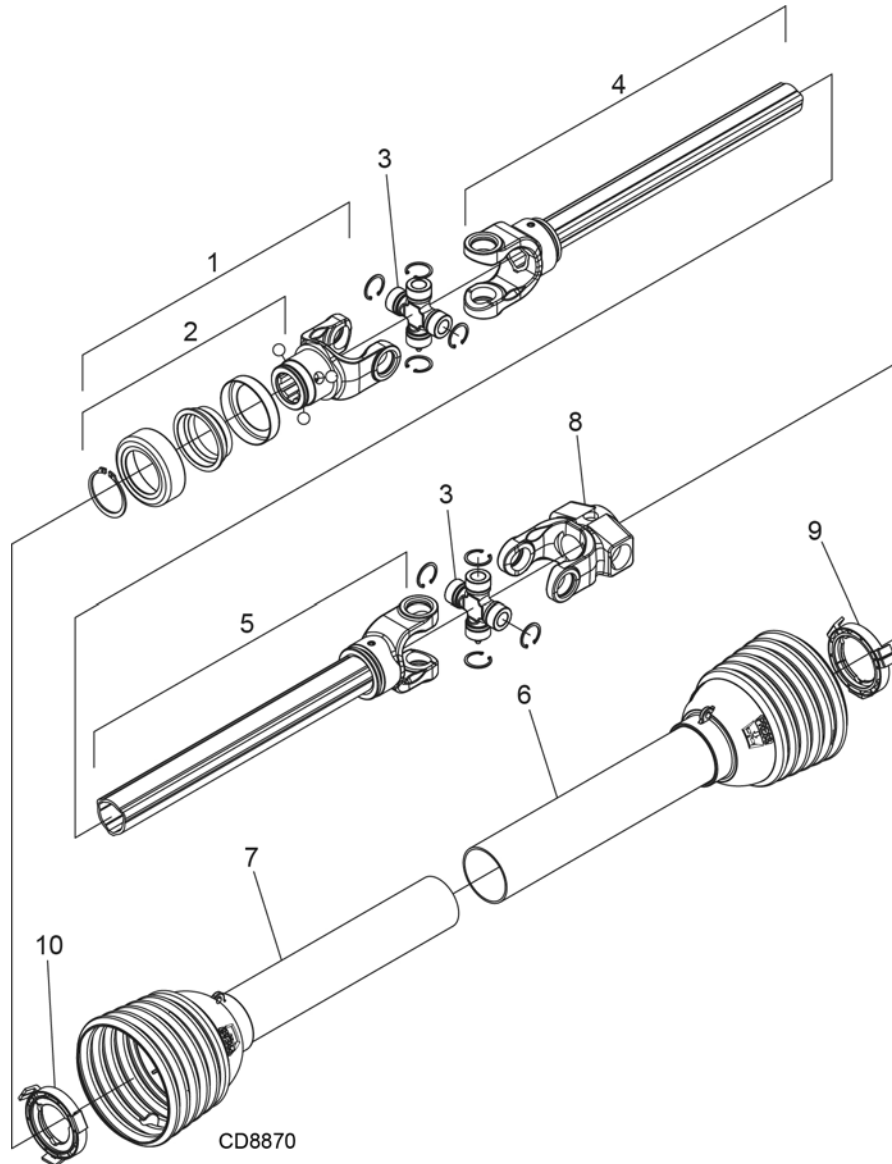
**48 Parts**

(Rev. 9/15/2015)

MAN0632 (5/15/2007)

## BB48X STANDARD DRIVELINE ASSEMBLY

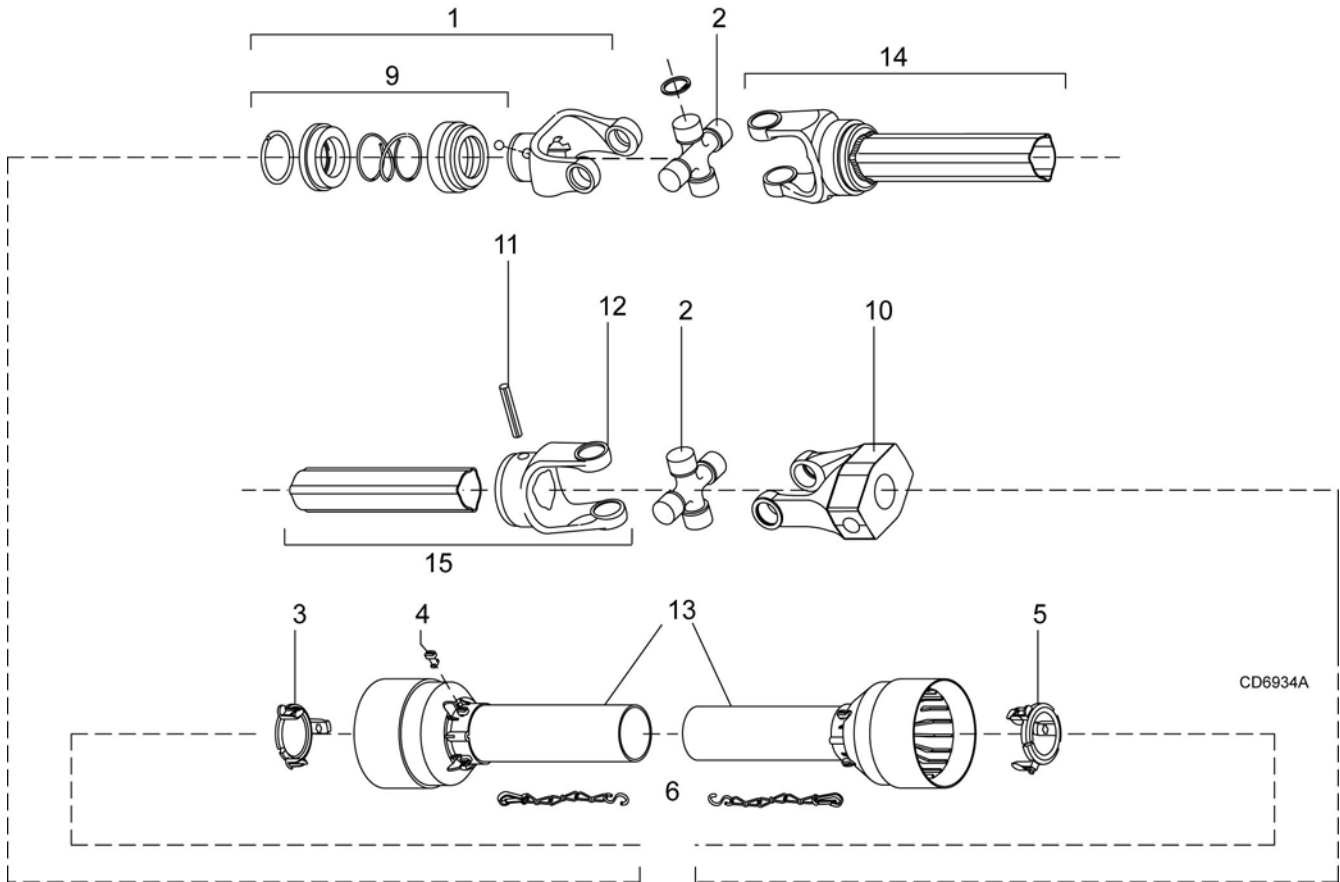
Identified by ribbed shields and grease fittings in cross bearing caps.



REF	PART	QTY	DESCRIPTION
A	601737	1	Complete driveline asy
1	1044051	1	Complete collar yoke C12 1-3/8 - 6
2	1044050	1	Lock collar repair kit
3	1044052	2	Cross & bearing kit
4	605246	1	Outer yoke & tube
5	605248	1	Inner yoke & tube
6	605250	1	Outer shield with bearing
7	605251	1	Inner shield with bearing
8	605249	1	Shear bolt yoke
9	605784	1	Outer shield bearing
10	605785	1	Inner shield bearing



## BB48X COMER STANDARD DRIVELINE ASSEMBLY



REF	PART	QTY	DESCRIPTION
A	1009509	1	Complete 540 driveline asy
1	1001300	2	Complete collar yoke C12 1-3/8 - 6
2	38478RP	2	Cross & bearing kit
3	1019442	1	Outer cone fix ring
4	30922	6	Protection fixing screw
5	1019444	1	Inner cone fix ring
6	30917	2	Chain shield tether
9	1001340	1	Lock collar repair kit
10	1019445	1	Special drive yoke
11	1001305	1	Flexible pin
12	1001306	1	Inner tube yoke
13	1021324	1	Shield, complete
14	30926	1	Outer yoke & tube (must be cut to length)
15	30932	1	Inner yoke & tube (must be cut to length)

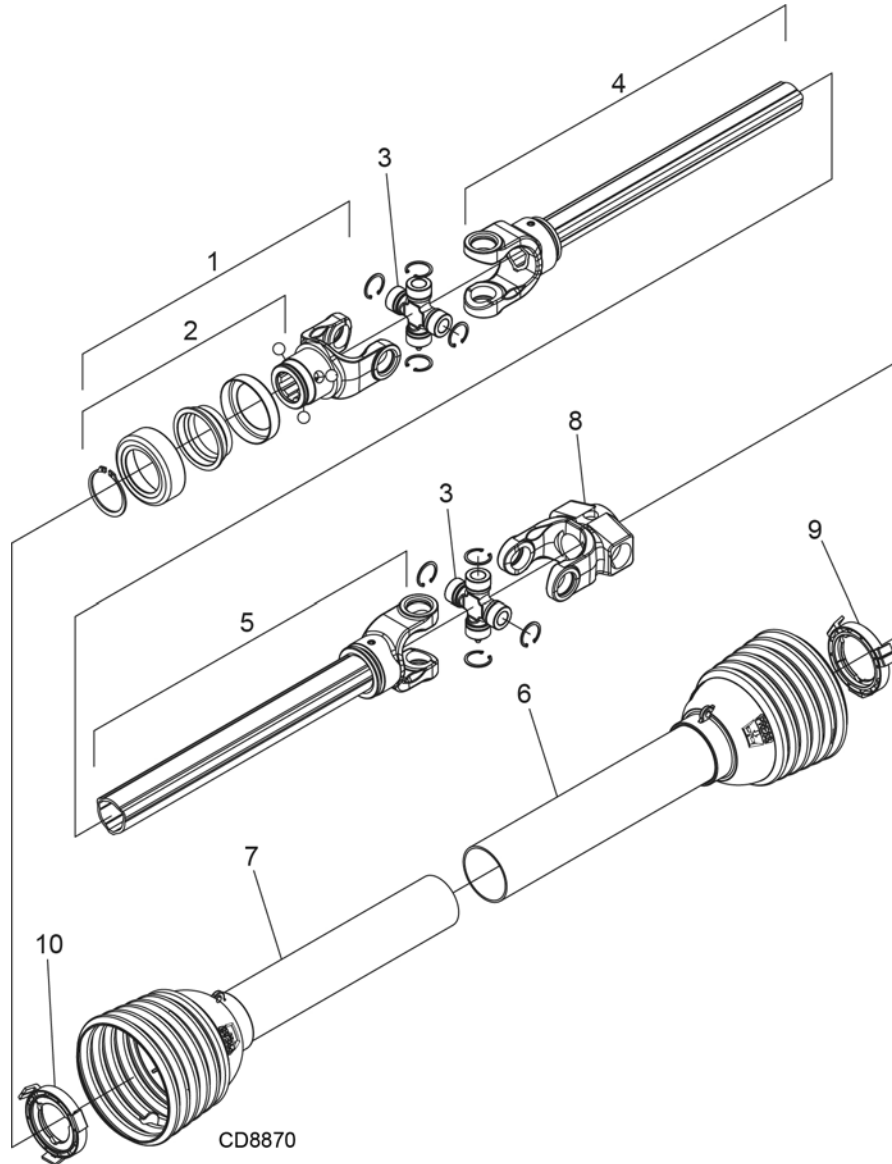
**50 Parts**

(Rev. 9/14/2007)

MAN0632 (5/15/2007)

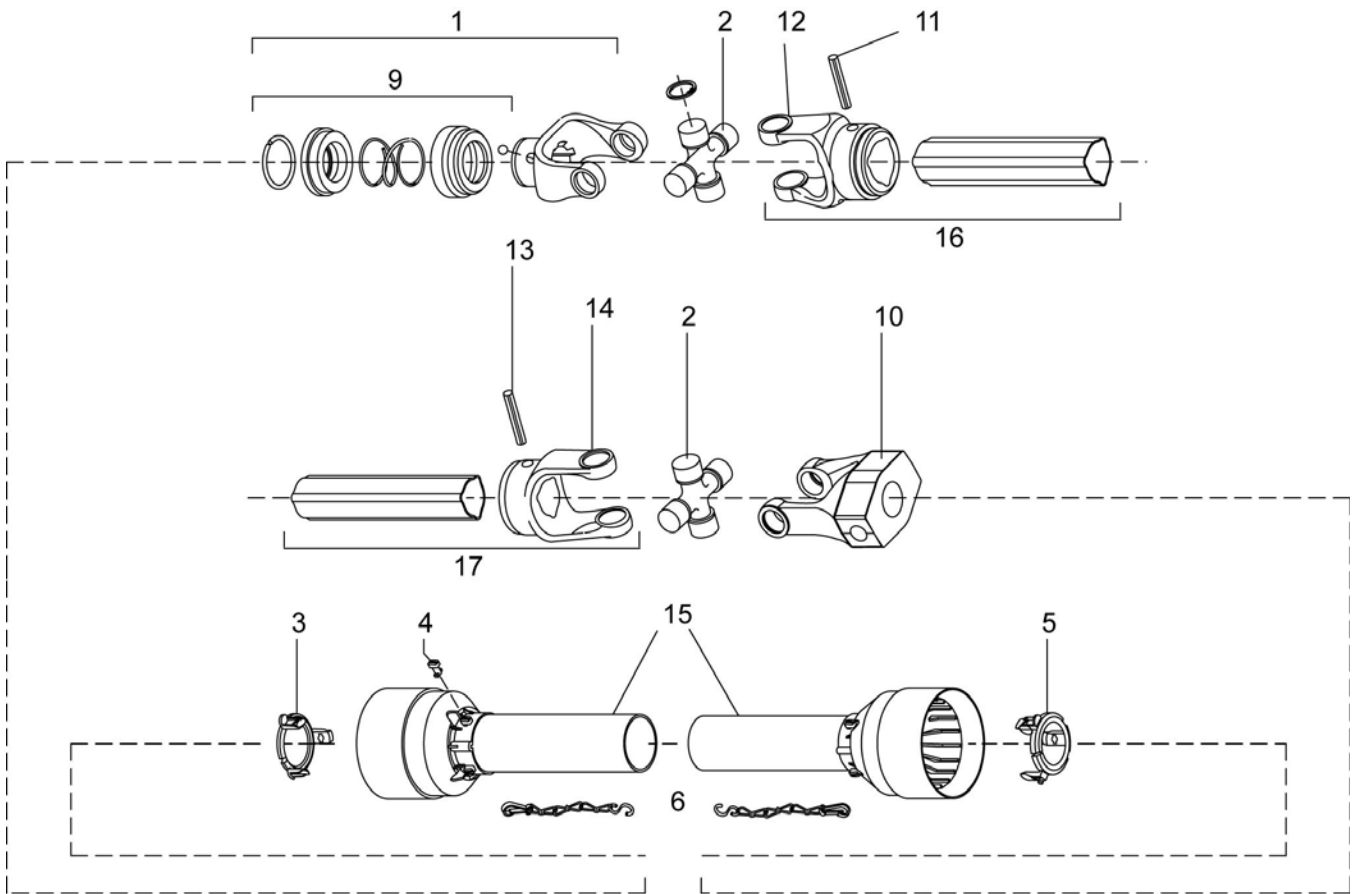
## BB60X STANDARD DRIVELINE ASSEMBLY

Identified by ribbed shields and grease fittings in cross bearing caps.



REF	PART	QTY	DESCRIPTION
A	601738	1	Complete driveline asy
1	1044051	1	Complete collar yoke C12 1-3/8 - 6
2	1044050	1	Lock collar repair kit
3	1044052	2	Cross & bearing kit
4	605252	1	Outer yoke & tube
5	605253	1	Inner yoke & tube
6	605254	1	Outer shield with bearing
7	605256	1	Inner shield with bearing
8	605249	1	Shear bolt yoke
9	605784	1	Outer shield bearing
10	605785	1	Inner shield bearing

## BB60X COMER STANDARD DRIVELINE ASSEMBLY



CD6935A

REF	PART	QTY	DESCRIPTION
A	1009510	1	Complete 540 driveline
1	1001300RP	2	Complete collar yoke C12 1-3/8 - 6
2	38478	2	Cross & bearing kit
3	1019442	1	Outer cone fix ring
4	30922	6	Protection fixing screw
5	1019444	1	Inner cone fix ring
6	30917	2	Chain shielding tether
9	1001340	1	Lock collar repair kit
10	1019445	1	Special drive yoke
11	1001302	1	Flexible pin
12	1001301	1	Outer yoke tube
13	1001305	1	Flexible pin
14	1001306	1	Inner tube yoke
15	1021550	1	Shield, complete
16	30926	1	Outer yoke & tube (must be cut to length)
17	30932	1	Inner yoke & tube (must be cut to length)

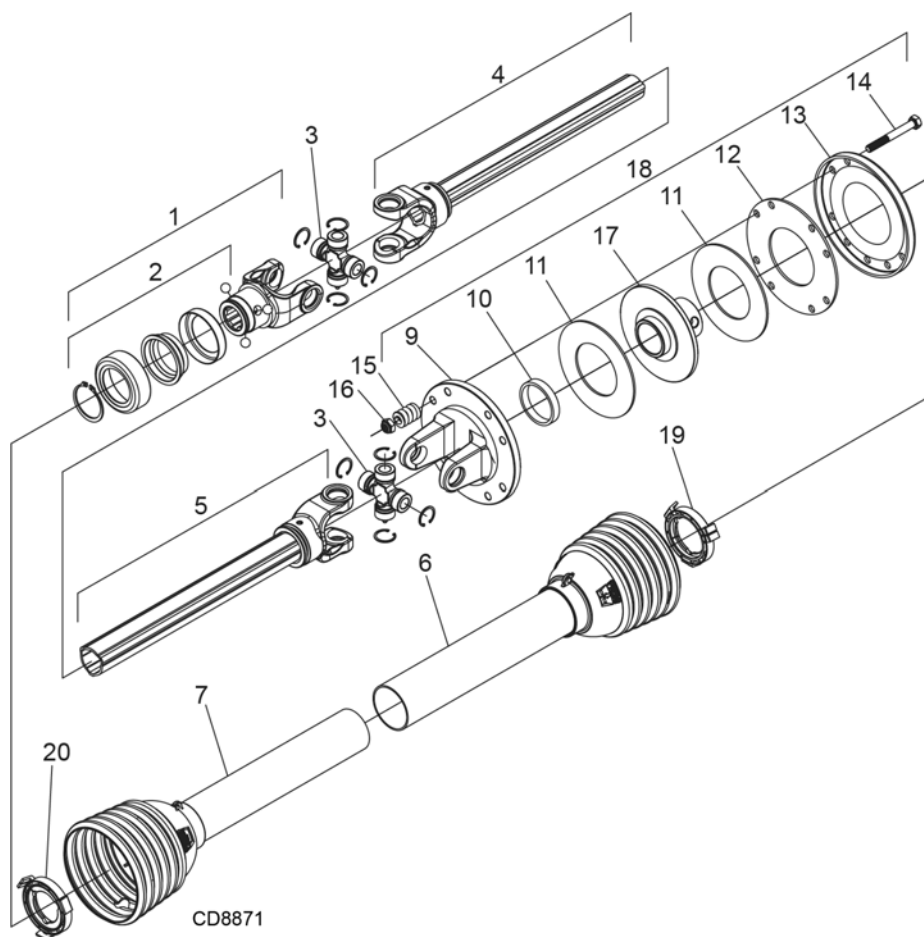
**52 Parts**

(Rev. 9/14/2007)

MAN0632 (5/15/2007)

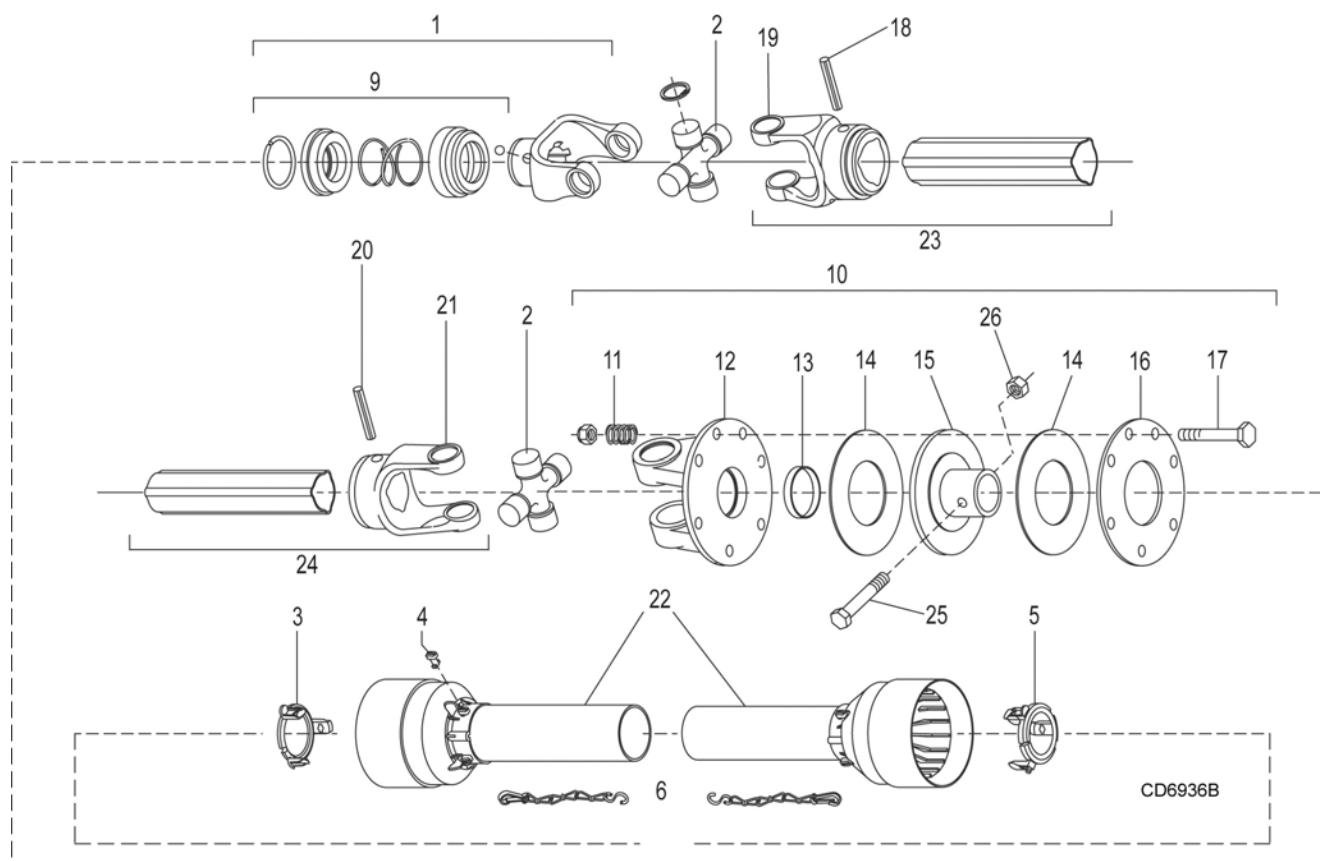
## BB48X & BB60X SLIP CLUTCH DRIVELINE ASSEMBLY (OPTIONAL)

Identified by ribbed shields and grease fittings in cross bearing caps.



REF	PART	QTY	DESCRIPTION
A	601749	1	Complete driveline and clutch asy
1	1044051	1	Complete collar yoke C12 1-3/8 - 6
2	1044050	1	Lock collar repair kit
3	1044052	2	Cross & bearing kit
4	605269	1	Outer yoke & tube
5	605270	1	Inner yoke & tube
6	605271	1	Outer shield with bearing
7	605272	1	Inner shield with bearing
9	1044077	1	Flanged yoke
10	1043994	1	Bushing
11	1044083	2	Friction disc
12	1044082	1	Internal disc
13	1044081	1	Pressure plate
14	307208	8	M10 x 1.5P x 85, HHCS
15	104056	8	Clutch spring
16	57260	8	M10 x 1.5P Nylon lock nut
17	605273	1	Clutch hub
18	605807	1	Friction clutch assembly
19	605784	1	Outer shield bearing
20	605785	1	Inner shield bearing

## BB48X & BB60X COMER SLIP CLUTCH DRIVELINE ASSEMBLY (OPTIONAL)



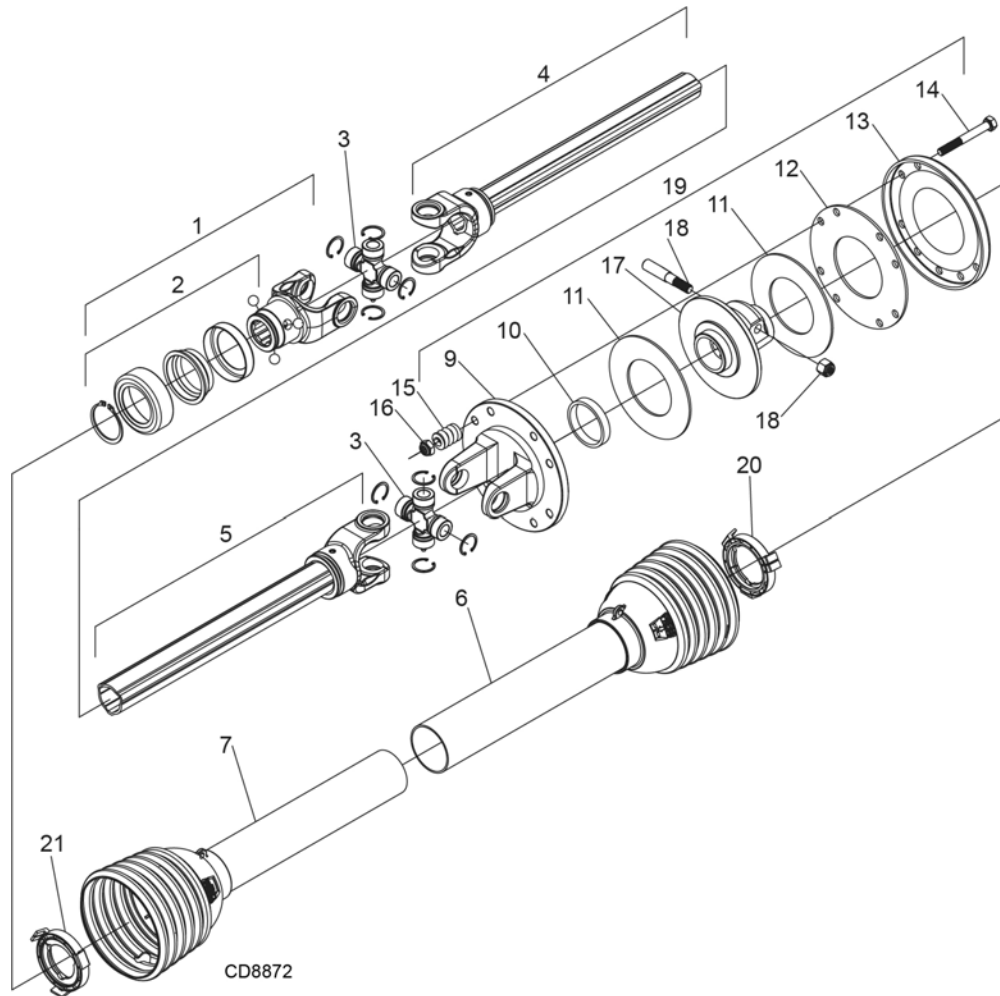
REF	PART	QTY	DESCRIPTION
A	1020900RP	1	Complete 540 driveline assembly
1	1001300RP	2	Complete collar yoke C12 1-3/8 - 6
2	38478RP	2	Cross & bearing kit
3	1019442	1	Outer cone fix ring
4	30922	6	Protection fixing ring
5	1019444	1	Inner come fix ring
6	30917	2	Chain shield tether
9	1001340	1	Lock collar repair kit
10	1019446	1	Special friction clutch
11	1001311	8	Spring
12	1019447	1	Flanged yoke
13	1001313RP	1	Bushing
14	1001314RP	2	Lining ring
15	1019448	1	Special hub F10
16	1001317	1	Pressure plate
17	1001318	8	Bolt & nut M10 x 80
18	1001302	1	Flexible pin
19	1001301	1	Outer yoke tube
20	1001305	1	Flexible pin
21	1001306	1	Inner tube yoke
22	1021551	1	Shield, complete
23	30926	1	Outer yoke & tube (must be cut to length)
24	30932	1	Inner yoke & tube (must be cut to length)
25	1024632	1	1/2 NC x 3 Hex Head Cap Screw, GR8
26	765	1	1/2 NC Hex lock nut

**54 Parts**

(Rev. 5/10/2012)  
MAN0632 (5/15/2007)

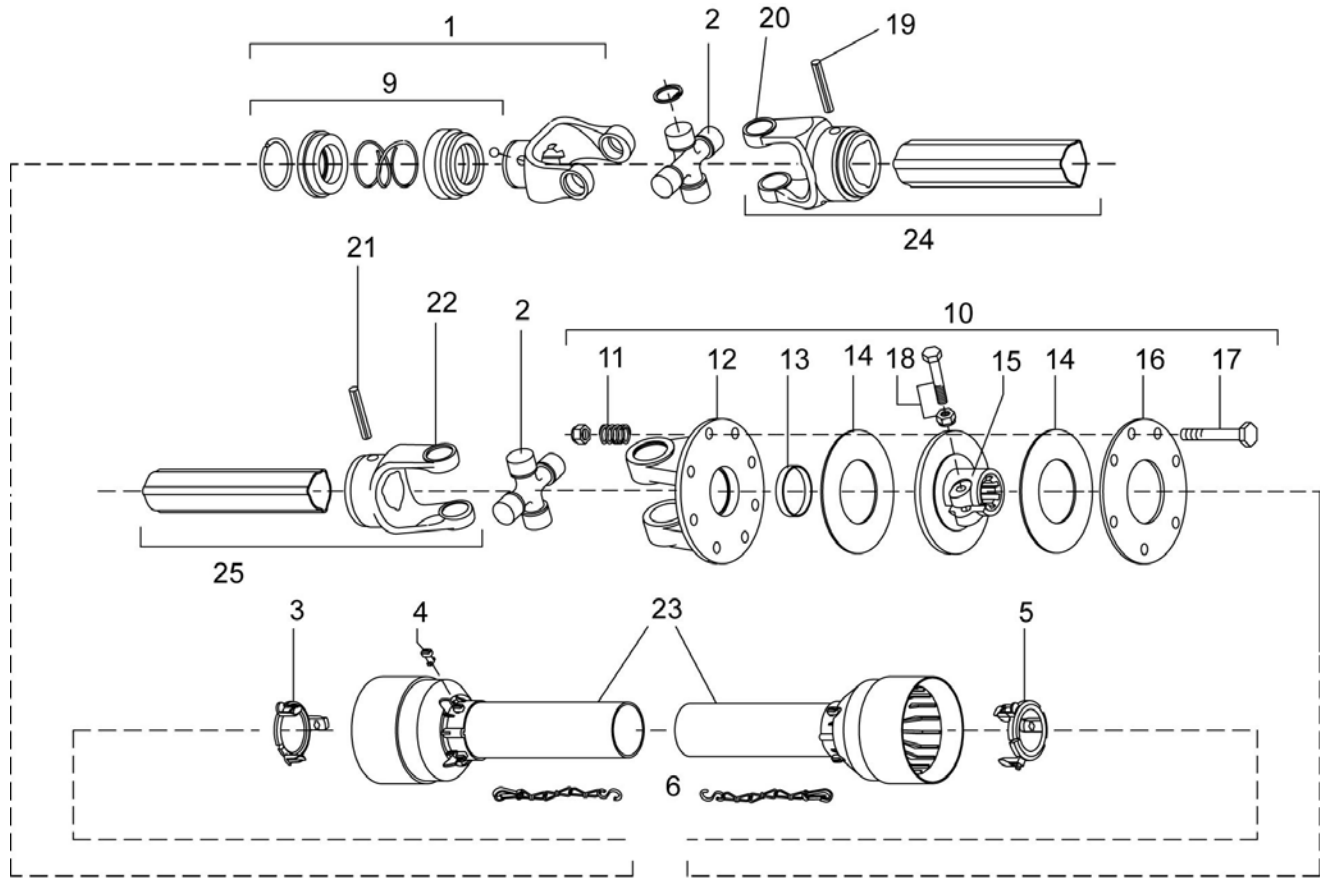
## BB72X SLIP CLUTCH DRIVELINE ASSEMBLY

Identified by ribbed shields and grease fittings in cross bearing caps.



REF	PART	QTY	DESCRIPTION
A	601750	1	Complete driveline and clutch asy
1	1044051	1	Complete collar yoke C12 1-3/8 - 6
2	1044050	1	Lock collar repair kit
3	1044052	2	Cross & bearing kit
4	605252	1	Outer yoke & tube
5	605253	1	Inner yoke & tube
6	605254	1	Outer shield with bearing
7	605256	1	Inner shield with bearing
9	1044077	1	Flanged yoke
10	1043994	1	Bushing
11	1044083	2	Friction disc
12	1044082	1	Internal disc
13	1044081	1	Pressure plate
14	307208	8	M10 x 1.5 x 85, HHCS
15	104056	8	Clutch spring
16	57260	8	M10 x 1.5P Nylon lock nut
17	1044076	1	Clutch hub
18	1044091	1	Tapered pin & nut
19	1044058	1	Friction clutch assembly
20	605784	1	Outer shield bearing
21	605785	1	Inner shield bearing

# BB72X COMER SLIP CLUTCH DRIVELINE ASSEMBLY



CD6937A

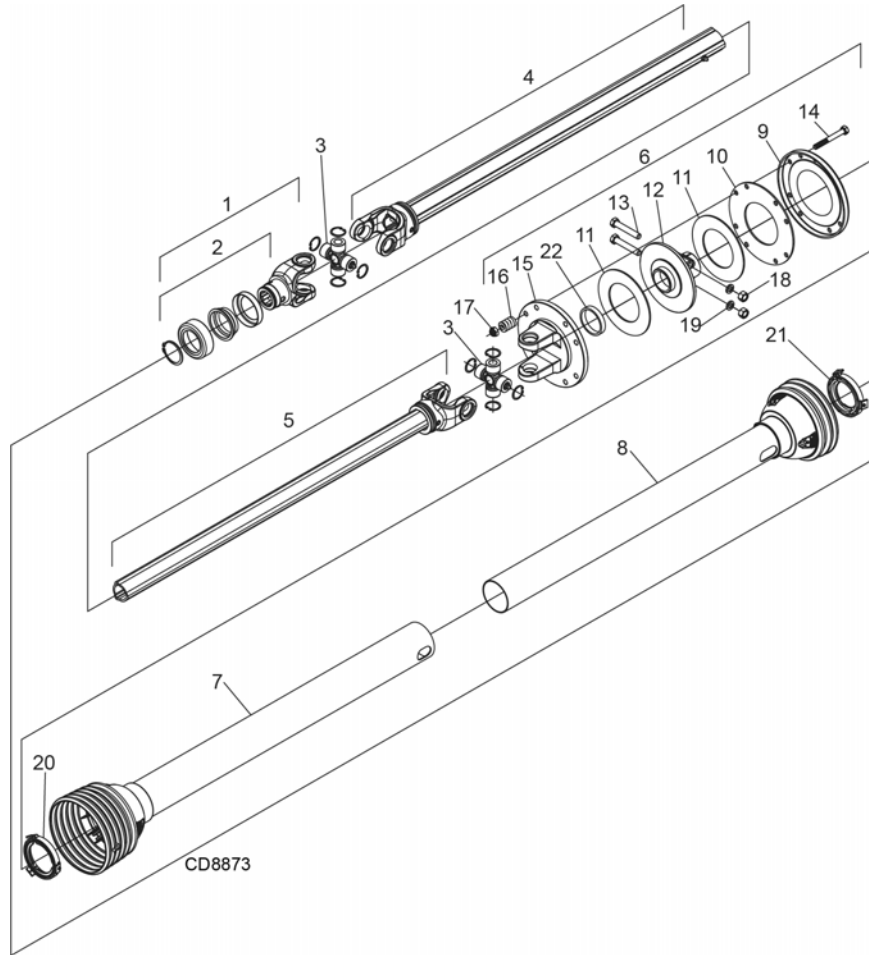
REF	PART	QTY	DESCRIPTION	REF	PART	QTY	DESCRIPTION
A	1020901	1	Complete 540 driveline asy	15	1001316	1	Flanged hub F12
1	1001300	2	Complete collar yoke C12 1-3/8 - 6	16	1001317	1	Pressure plate
2	38478	2	Cross and bearing kit	17	1001318	8	Bolt & nut M10 x 80
3	1019442	1	Outer cone fix ring	18	1001315	1	Bolt & nut M12 x 1.25 x 65
4	30922	6	Protection fixing screw	19	1001302	1	Flexible pin
5	1019444	1	Inner cone fix ring	20	1001301	1	Outer yoke tube
6	30917	2	Chain-shield tether	21	1001305	1	Flexible pin
9	1001340	1	Lock collar repair kit	22	1001306	1	Inner tube yoke
10	1019449RP	1	Friction clutch	23	1021552	1	Shield, complete
11	1001311	8	Spring	24	30926	1	Outer yoke & tube (must be cut to length)
12	1001312	1	Flanged yoke	25	30932	1	Inner yoke & tube (must be cut to length)
13	1001313RP	1	Bushing	18	1001315	1	Bolt & nut M12 x 1.25 x 65
14	1001314RP	2	Lining ring	19	1001302	1	Flexible pin

**56 Parts**

(Rev. 8/8/2008)

MAN0632 (5/15/2007)

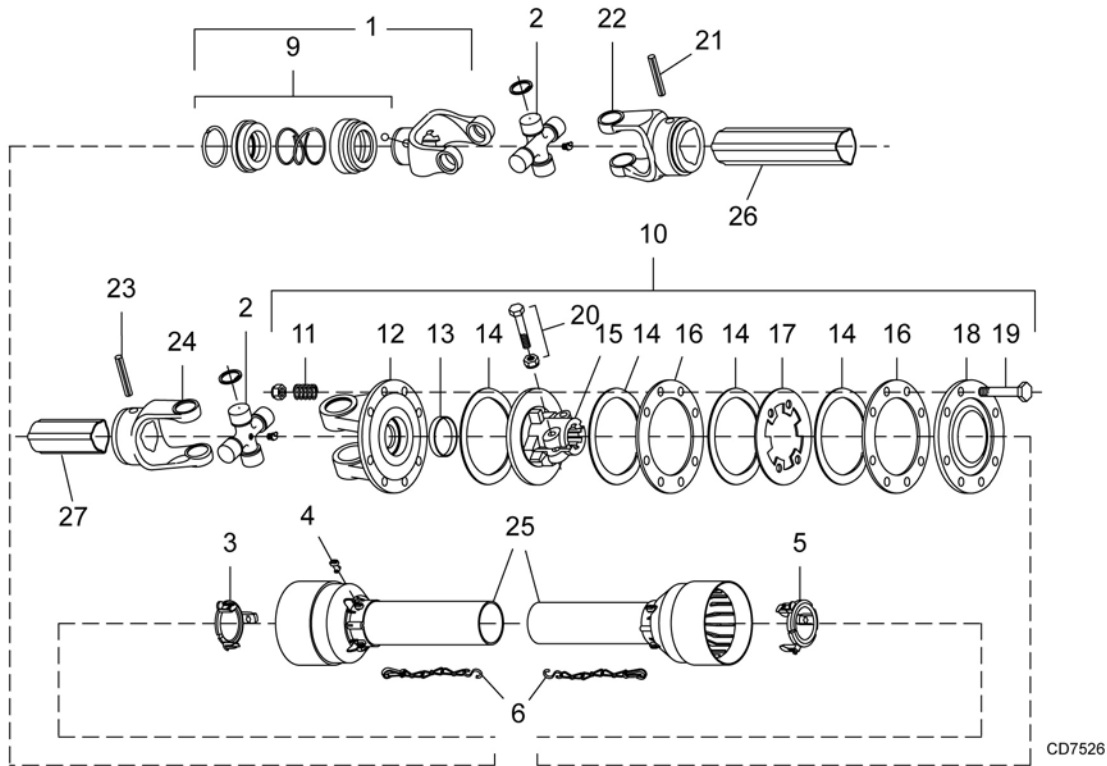
**BB84X SLIP CLUTCH DRIVELINE ASSEMBLY**  
 Identified by ribbed shields and grease fittings in cross bearing caps.



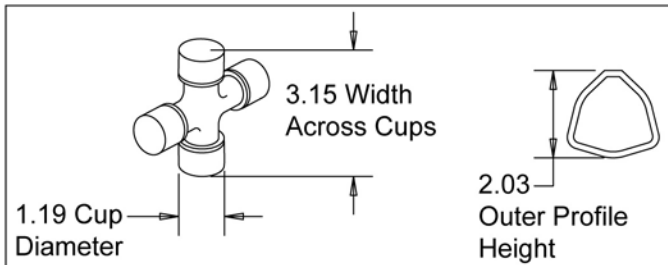
REF	PART	QTY	DESCRIPTION
A	601751	1	Complete driveline and clutch asy
1	605274	1	Complete collar yoke
2	605275	1	Lock collar repair kit
3	605276	2	Cross & bearing kit
4	605277	1	Outer yoke & tube
5	605278	1	Inner yoke & tube
6	605281	1	Friction clutch assembly
7	605279	1	Outer shield with bearing
8	605280	1	Inner shield with bearing
9	605285	1	Pressure plate
10	605284	1	Internal disc
11	605286	2	Friction disc
12	605283	1	Clutch hub
13	1045118	2	M12 x 1.75 x 75, HHCS
14	565275	8	M10 x 1.5P x 100, HHCS
15	605282	1	Flanged yoke
16	104056	8	Clutch spring
17	57260	8	M10 x 1.5P Nylon lock nut
18	1045120	2	M12 x 1.75 Hex nut
19	1045119	2	M12 Lock washer
20	605786	1	Outer shield bearing
21	605787	1	Inner shield bearing
22	605287	1	Bushing



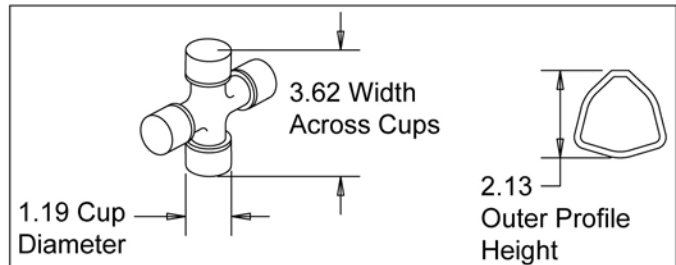
## BB84X COMER SLIP CLUTCH DRIVELINE ASSEMBLY



50 Series Drive Dimensions



60 Series Drive Dimensions



REF	PART 60 Series	PART 50 Series	QTY	DESCRIPTION
A	1024144	1024144	1	Complete driveline asy
1	1001325	1028775	1	Complete collar yoke
2	30962	36990	2	Cross and bearing kit
3	1001333	1028776	1	Outer bearing kit
4	1001309	30922	6	Screw
5	1001334	1028777	1	Inner bearing kit
6	30917	30917	2	Chain, shield tether
9	1001340	1001340	1	Lock collar repair kit
10	1029689	1028778	1	Friction clutch
11	1001311	1001311	8	Spring
12	1029690	1028779	1	Flange yoke
13	1028780	1028780	1	Bushing
14	1028781	1028781	1	Lining ring

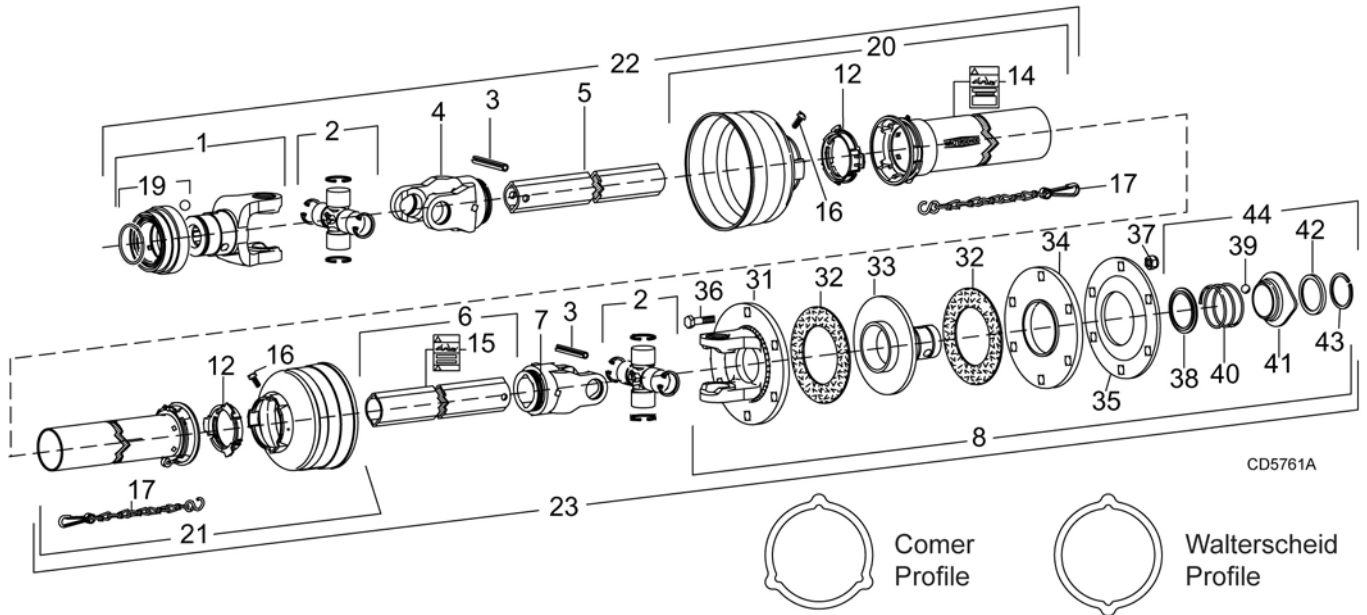
REF	PART 60 Series	PART 50 Series	QTY	DESCRIPTION
15	1029691	1028782	1	Flange hub
16	1028783	1028783	2	Inner plate
17	1028784	1028784	1	Intermediate plate
18	1028785	1028785	1	Pressure plate
19	1028786	1028786	8	M10 x 85 mm Bolt & nut
20	1001274	1001315	2	Bolt & nut
21	1001327	1001330	1	Flexible pin
22	1001326	51180	1	Outer tube yoke
23	1001330	1019863	1	Flexible pin
24	1001331	1019860	1	Inner tube yoke
25	1029688	1028787	1	Shield complete
26	1029687	1019862	1	Outer profile
27	1029686	1019861	1	Inner profile

**58 Parts**

(Rev. 11/6/2012)

MAN0632 (5/15/2007)

## BB84X WALTERSCHEID SLIP CLUTCH DRIVELINE ASSEMBLY



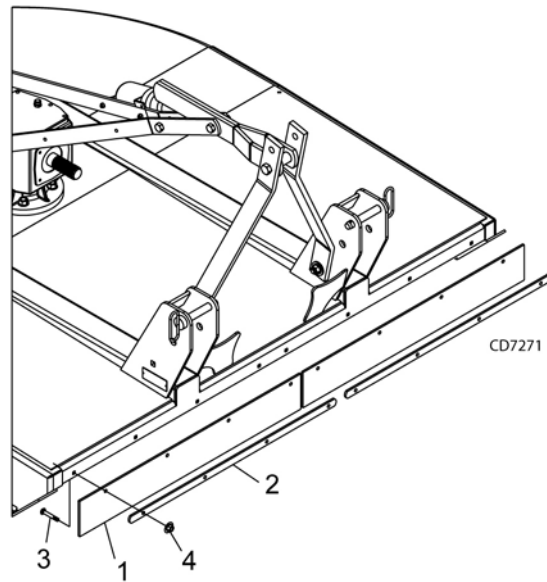
REF	PART	QTY	DESCRIPTION	REF	PART	QTY	DESCRIPTION
1	40574	1	Yoke 1-3/8 - 6 spline	22	57410	1	Shaft assembly, male (complete with guard)
2	110RP	2	Cross & bearing kit	23	NSS	1	Shaft assembly, female (complete with guard)
3	40764	2	Spring pin 10 x 80	31	57438	1	Flange yoke
4	40575	1	Inboard yoke	32	57432	2	Friction disc (set of 2)
5	40587	1	Inner profile	33	57436	1	Hub, 1-3/8" spline
6	40588	1	Outer profile	34	57434	1	Thrust plate
7	40576	1	Inboard yoke	35	57439RP	1	Belleville spring plate
8	57412	1	Friction slip clutch	36	57259	6	10 mm x 1.5P x 55 mm Cap screw
12	40766	2	Bearing ring SC25	37	57260	6	10 mm x 1.5P Hex lock nut
14	18864RP	1	Danger decal, rotating driveline	38	—	1	Back-up ring
15	33347RP	1	Danger decal, shield missing	39	—	3	Ball
16	40778	2	Screw, included in items 9 & 13	40	—	1	Compression spring
17	40777	2	Anti-rotation chain	41	—	1	Lock collar
19	40589	1	Slide collar kit	42	—	1	Back-up ring
20	40590	1	Outer guard half	43	—	1	Snap ring
21	40591	1	Inner guard half	44	57437	1	QD Flange service kit (items 38-43)

NSS Not Serviced Separately

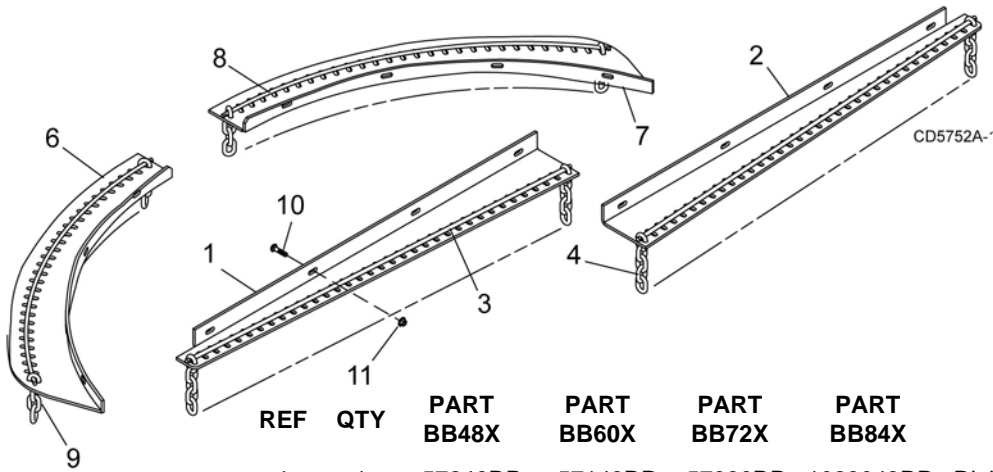
## FRONT RUBBER SHIELDING (STANDARD)

REF	PART	QTY	DESCRIPTION
A	1013207	1	Rubber shield kit - <b>BB48X</b>
A	1013208RP	1	Rubber shield kit 5 ft - <b>BB60X</b>
A	1013209RP	1	Rubber shield kit 6 ft - <b>BB72X</b>
A	1023042RP	1	Rubber shield kit 7 ft - <b>BB84X</b>
1	1004128RP	2	Rubber deflector 25.25 - <b>BB48X</b>
1	1004129RP	2	Rubber deflector 31.25 - <b>BB60X</b>
1	1004130RP	2	Rubber deflector 37.25 - <b>BB72X</b>
1	1024119	2	Rubber deflector 43.25 - <b>BB84X</b>
2	1013213RP	2	Link .25 x 1.00 x 21.50 - <b>BB48X</b>
2	1013214RP	2	Link .25 x 1.00 x 28.75 - <b>BB60X</b>
2	1013215RP	2	Link .25 x 1.00 x 34.75 - <b>BB72X</b>
2	1024118RP	4	Link .25 x 1.00 x 16.00 - <b>BB84X</b>
3	6697RP *	8	3/8 NC x 1 Carriage bolt
4	14350RP *	8	3/8 NC Flange hex nut

\* Standard hardware; obtain locally



## FRONT & REAR CHAIN SHIELDING (OPTIONAL)



REF	QTY	PART BB48X	PART BB60X	PART BB72X	PART BB84X	DESCRIPTION
1	1	57246RP	57143RP	57090RP	1023048RP	Right front chain plate
2	1	57254RP	57144RP	57091RP	1023047RP	Left front chain plate
3	2	1003643	1003645	1007850	1007851	.243 Dia. bent pin (front)
4	AR	5496	5496	5496	5496	5/16 - 7 Link chain (front)
6	1	57248RP	57142RP	57088RP	57125RP	Right rear chain plate
7	1	57247RP	57141RP	57089RP	57149RP	Left rear chain plate
8	2	57249	57138	57085	57146	.243 Dia. rolled bent pin (rear)
9	AR	4069	4069	4069	4069	5/16 - 4 Link chain (rear)
10	16	6697RP*	6697RP*	6697RP*	6697RP*	3/8 NC x 1 Carriage bolt
11	16	14350RP	14350RP	14350RP	14350RP	3/8 NC Flange hex nut

AR As Required

\* Standard hardware, obtain locally

**60 Parts**

(Rev. 5/10/2012)

MAN0632 (5/15/2007)